

Contents:

Section	Page
1) Purpose.....	1
2) Definitions and Notes.....	1
3) Steel Chain Container Assembly (SCCA) Numbers and Maximum Lifts.....	2
4) Container Dimensions.....	4
5) Installation Procedure.....	6

1) Purpose

This document provides information internal to Harrington for the selection of SCCA Part Assemblies. SCCA's are available for the following hoists:

- TCR 250 – through – 6000
- TCRM 250 – through – 6000
- TCRP 250 – through – 6000
- TCRG 250 – through – 6000

Information Provided:

- Container Assembly Part Number
- Maximum Lifts
- Dimensions of Chain Container for ½ Ton through 6 Ton Models
- Installation Procedure for ½ Ton through 6 Ton Models

2) Definitions and Notes

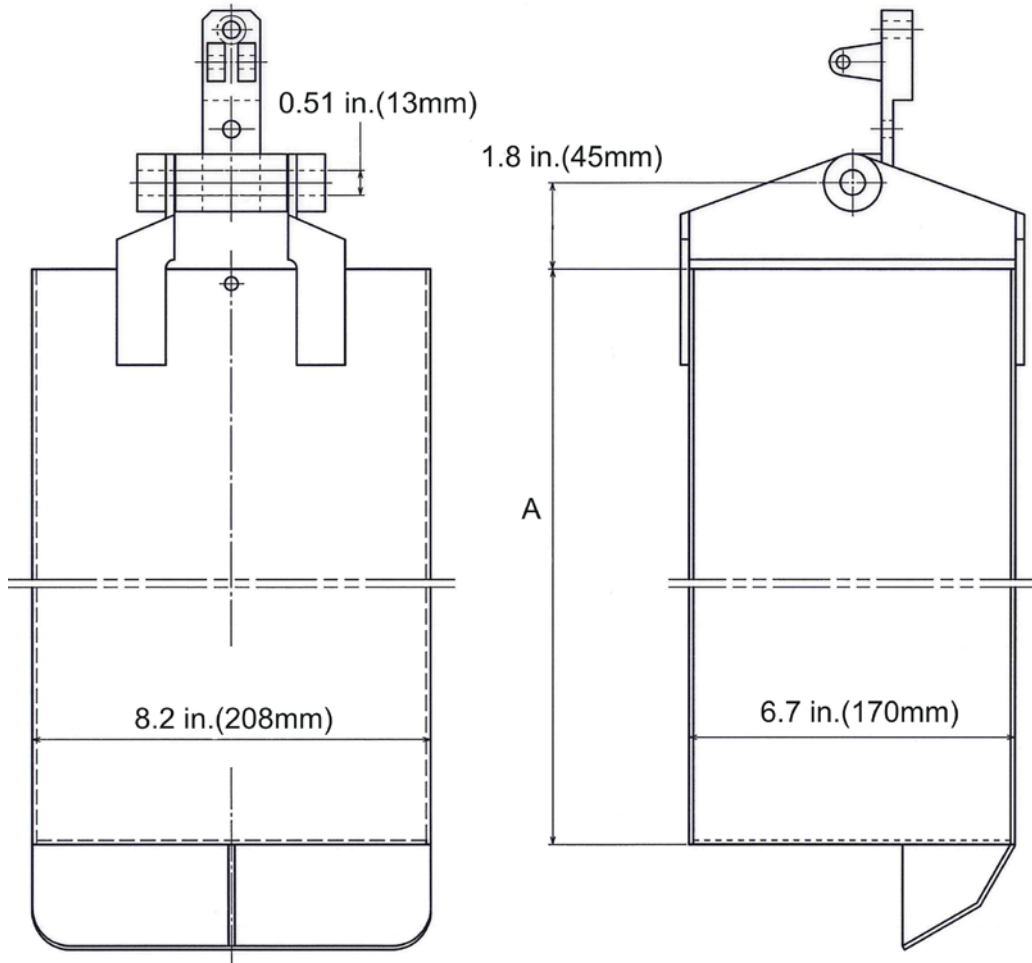
1. SCCA = Steel Chain Container Assembly, and required components to attach the chain container to the hoist.
2. Part numbers for SCCA's begin with "TCR" followed by 9 digits "XXXXXXXXXX".

3) Steel Chain Container Assembly Numbers and Maximum Lifts

Max. Lift		Table 1 – Container Part Numbers and Maximum Lifts					
feet	meters	500	1000	1000-2	2000-2	3000	6000-2
20	6						TCR426325XAC
23	7						TCR426325XBC
26	8			TCR426224XDC			TCR426325XCC
29	9			TCR426224XEC			TCR426325XDC
32	10			TCR426224XFC			TCR426325XEC
36	11						TCR426325XFC
40	12			TCR426224XGC		TCR426325XAC	TCR426325XGC
43	13						TCR426325XHC
46	14					TCR426325XBC	TCR426325XIC
50	15			TCR426224XHC			TCR426325XJC
53	16	TCR426224XDC				TCR426325XCC	TCR426325XKC
56	17			TCR426224XIC			TCR426325XLC
60	18	TCR426224XEC				TCR426325XDC	TCR426325XMC
66	20	TCR426224XFC		TCR426224XJC		TCR426325XEC	
72	22					TCR426325XFC	
79	24	TCR426224XGC				TCR426325XGC	
85	26					TCR426325XHC	
92	28					TCR426325XIC	
98	30	TCR426224XHC				TCR426325XJC	

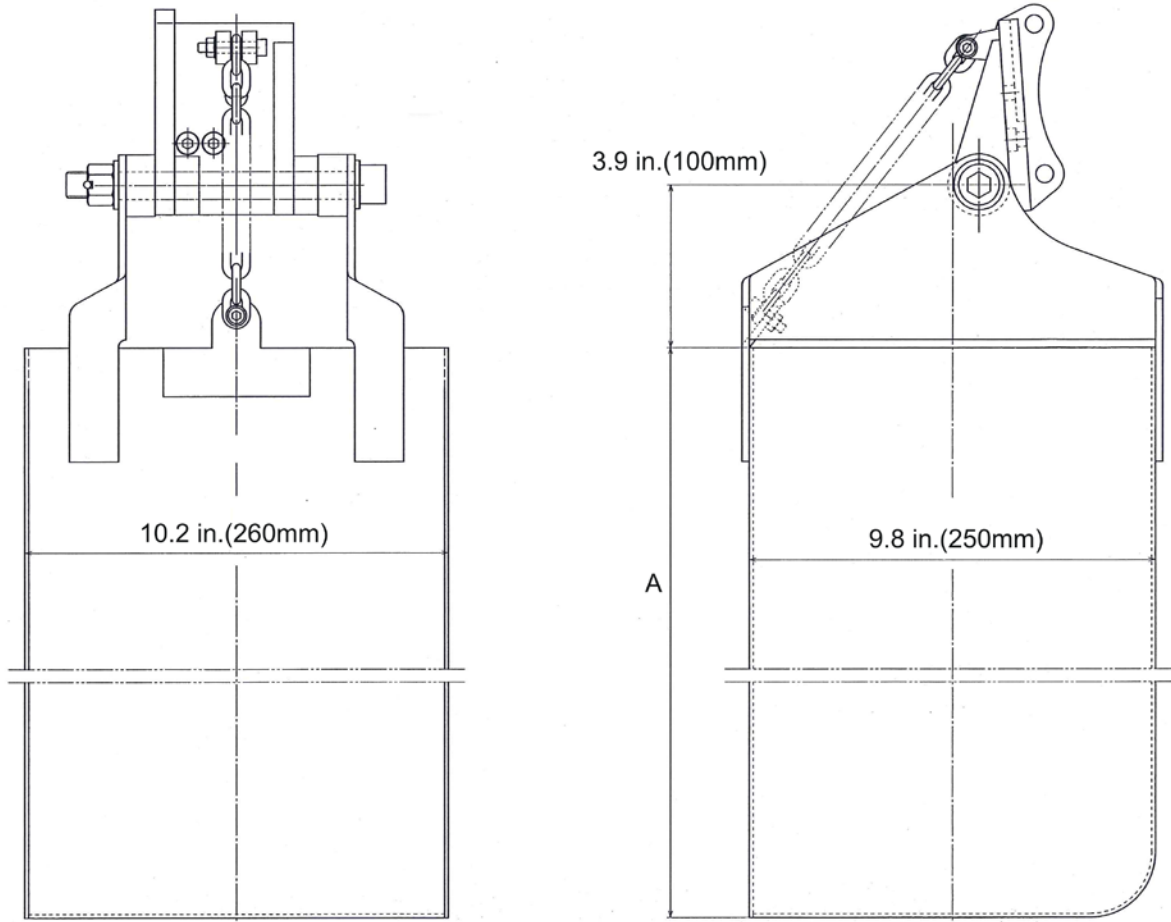
Max. Lift		Table 1 – Container Part Numbers and Maximum Lifts					
feet	meters	500	1000	1000-2	2000-2	3000	6000-2
105	32					TCR426325XKC	
112	34	TCR426224XIC				TCR426325XLC	
118	36					TCR426325XMC	
131	40	TCR426224XJC					

Table 2 – TCR250 TO TCR2000-2



Steel Chain Container Part Number:	TCR250/500 MAX LIFT (ft/m)	TCR1000 MAX LIFT (ft/m)	TCR1000-2 MAX LIFT (ft/m)	TCR2000-2 MAX LIFT (ft/m)	"A" DIMENSION (in/mm)	WEIGHT (lbs/Kg)
TCR426224XDC	53/16			26/8	21.3/540	18.7/8.5
TCR426224XEC	60/18			29/9	22.1/562	19.6/8.9
TCR426224XFC	66/20			32/10	23.0/584	20.0/9.1
TCR426224XGC	79/24			40/12	24.7/628	21.2/9.6
TCR426224XHC	98/30			50/15	27.3/694	22.9/10.4
TCR426224XIC	112/34			56/17	29.1/738	24.3/11.0
TCR426224XJC	131/40			66/20	31.7/804	26.0/11.8

Table 3 – TCR3000 & TCR6000-2

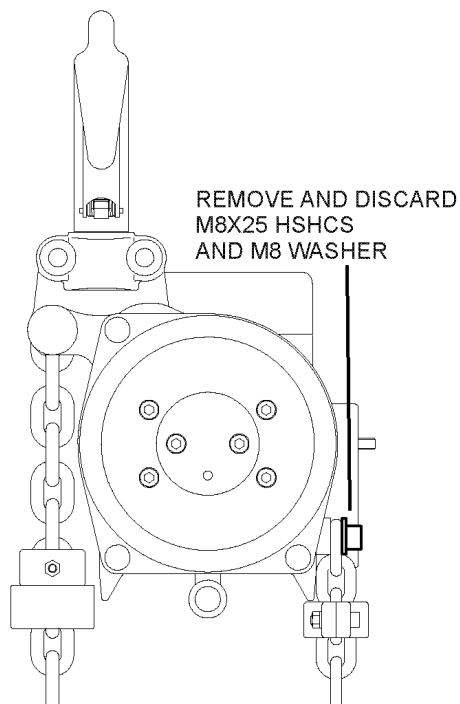


Steel Chain Container Part Number:	TCR3000 MAX LIFT (ft/m)	TCR6000-2 MAX LIFT (ft/m)	“A” DIMENSION (in/mm)	WEIGHT (lbs/Kg)
TCR426325XAC	40/12	20/6	13.8/350	26.0/11.8
TCR426325XBC	46/14	23/7	15.7/400	28.0/12.7
TCR426325XCC	53/16	26/8	17.7/450	30.0/13.6
TCR426325XDC	60/18	29/9	19.7/500	32.0/14.5
TCR426325XEC	66/20	32/10	21.7/550	34.0/15.4
TCR426325XFC	72/22	36/11	23.6/600	35.9/16.3
TCR426325XGC	79/24	40/12	25.6/650	38.1/17.3
TCR426325XHC	85/26	43/13	27.6/700	40.1/18.2
TCR426325XIC	92/28	46/14	29.5/750	42.1/19.1
TCR426325XJC	98/30	50/15	31.5/800	44.1/20.0
TCR426325XKC	105/32	53/16	33.5/850	46.1/20.9
TCR426325XLC	112/34	56/17	35.4/900	48.1/21.8
TCR426325XMC	118/36	60/18	37.4/950	50.0/22.7

5) Installation Procedure for 1/2 Ton, 1 Ton and 2 Ton Models

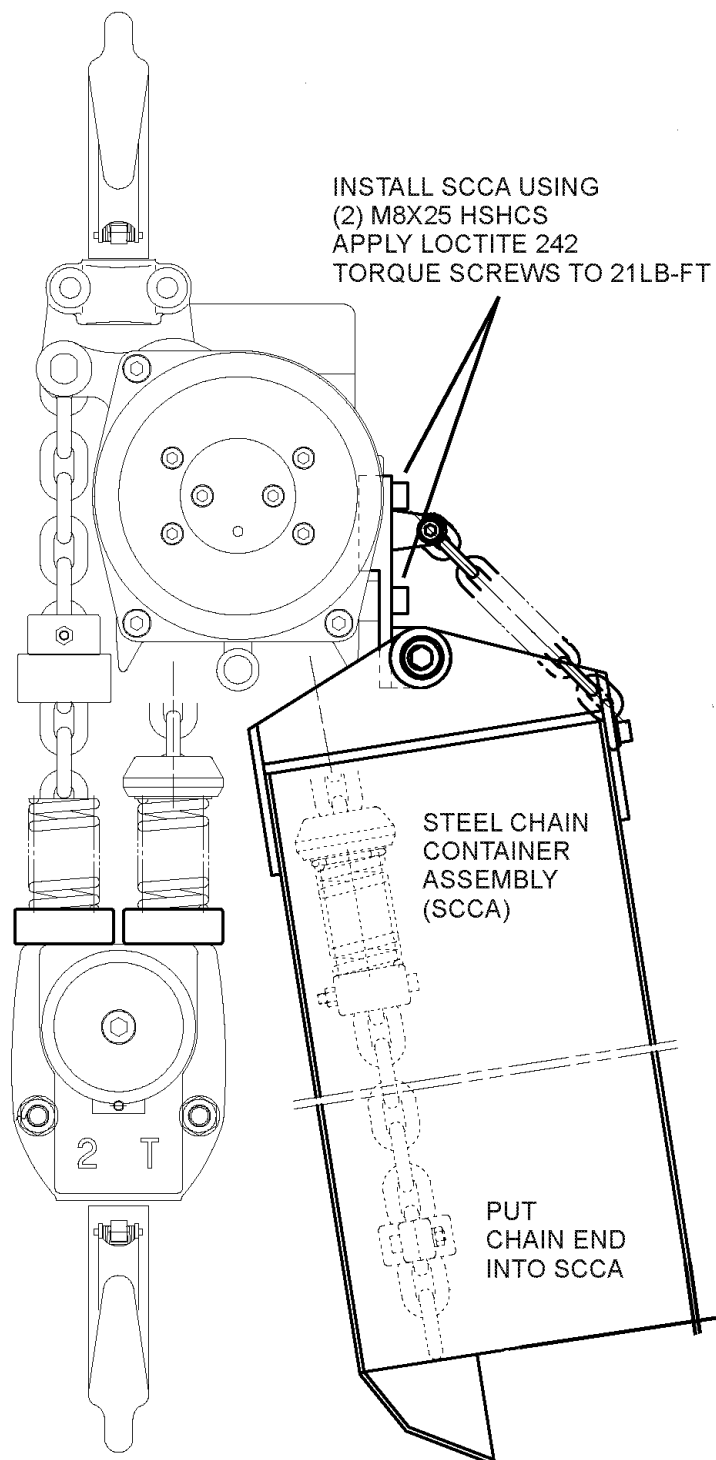
1. Remove the M8X25 hex socket head cap screw (HSHCS) and M8 washer from the hoist. They will not be re-used. Reference Figure 1.
2. Place the load chain end into the steel chain container assembly (SCCA). Install the SCCA bracket onto the hoist as shown in Figure 2 using the two (2) M8X25 HSHCS. Apply Loctite 242 and tighten the screw/bolt to 21 LB-FT.
3. Install the SCCA support chain to the bracket using one (1) M6X35 HSHCS as shown in Figure 3. Attach using the M6 lock nut and washer. Do not apply Loctite to the screw. Fasten the screw/bolt until fully seated. Do not fully tighten or torque.

Figure 1 – Installation Procedure for 1/2 Ton, 1 Ton and 2 Ton Models



Remove the M8X25 HSHCS and M8 washer from the hoist. They will not be re-used.

Figure 2 – Installation Procedure for 1/2 Ton, 1 Ton and 2 Ton Models



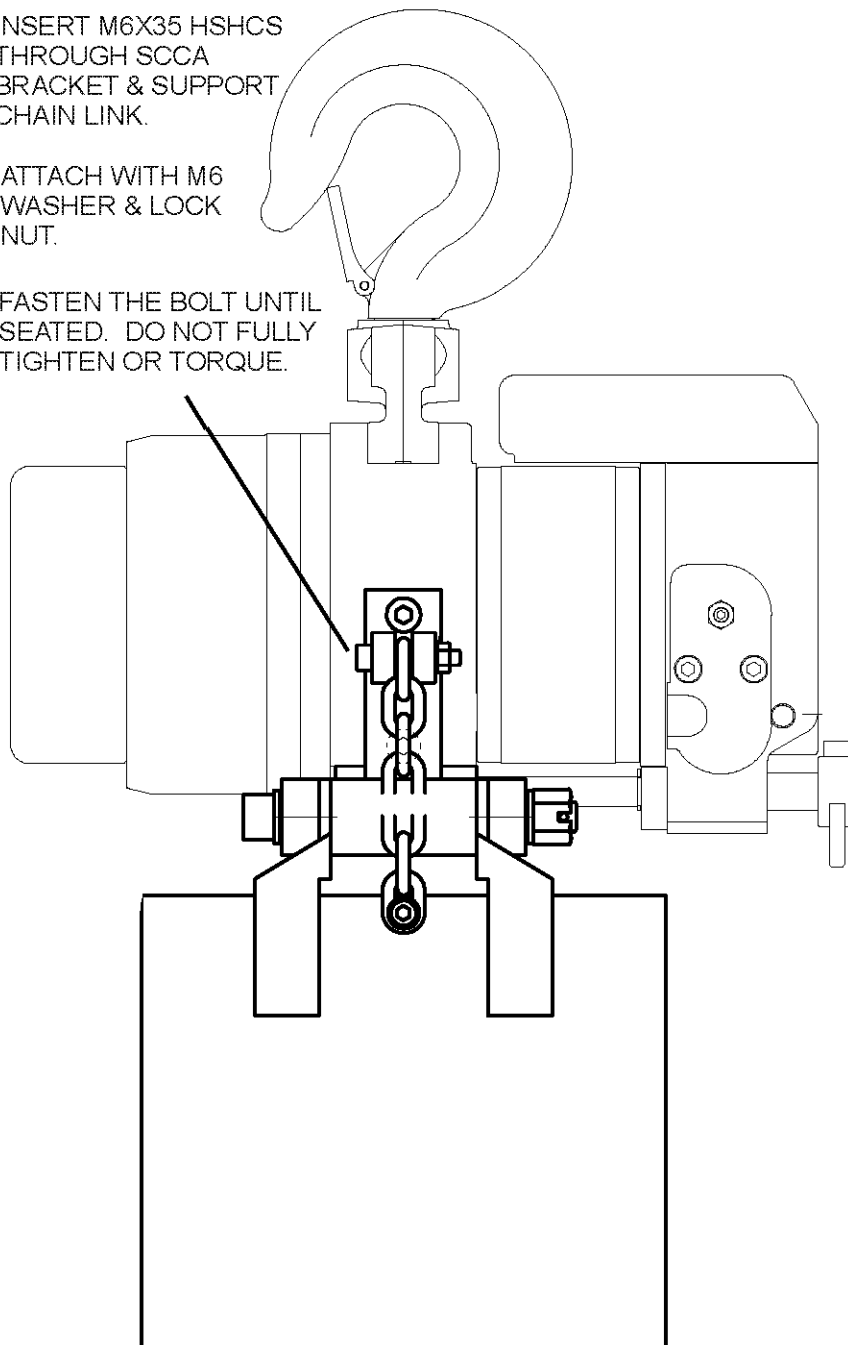
Place the load chain end into the steel chain container assembly (SCCA). Install the SCCA bracket onto the hoist as shown in Figure 2 using the two (2) M8X25 HSHCS. Apply Loctite 242 and tighten the screw/bolt to 21 LB-FT.

Figure 3 – Installation Procedure for 1/2 Ton, 1 Ton and 2 Ton Models

INSERT M6X35 HSHCS
THROUGH SCCA
BRACKET & SUPPORT
CHAIN LINK.

ATTACH WITH M6
WASHER & LOCK
NUT.

FASTEN THE BOLT UNTIL
SEATED. DO NOT FULLY
TIGHTEN OR TORQUE.

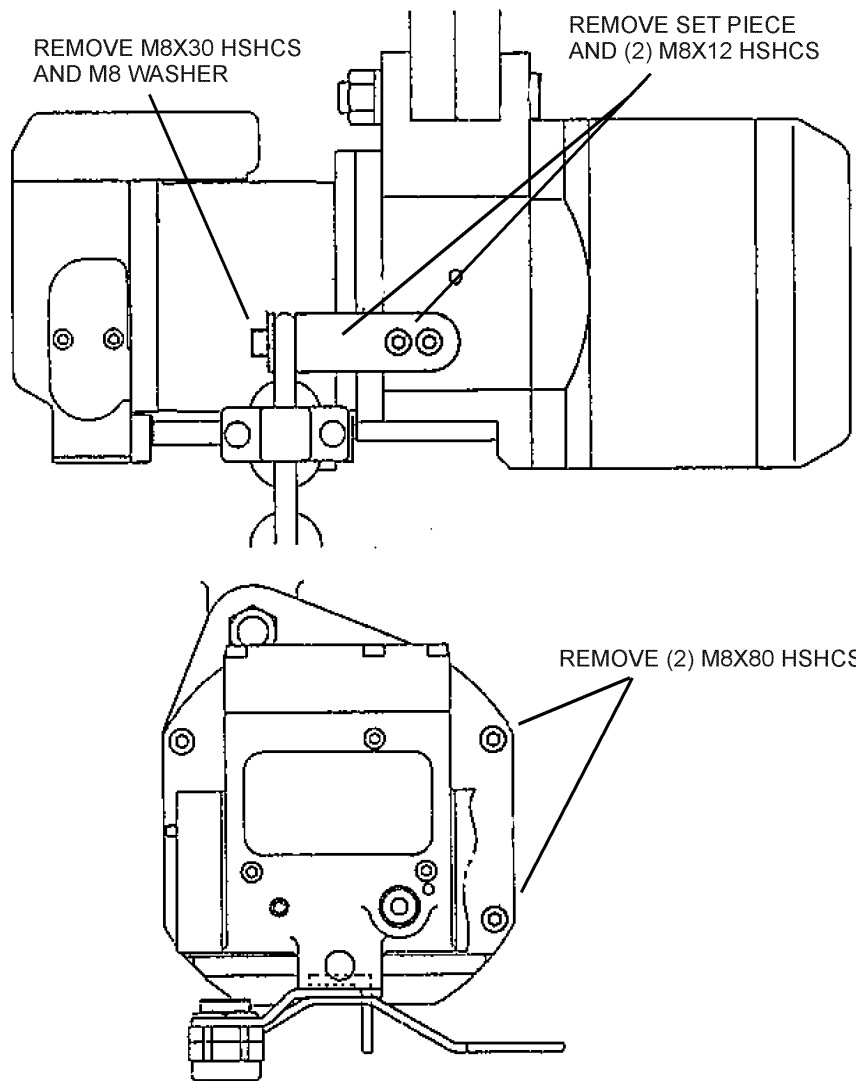


Install the SCCA support chain to the bracket using one (1) M6X35 HSHCS. Attach using the M6 locknut and washer. Do not apply Loctite to the screw. Fasten the screw/bolt until fully seated. Do not fully tighten or torque.

6) Installation Procedure for 3 Ton and 6 Ton Models

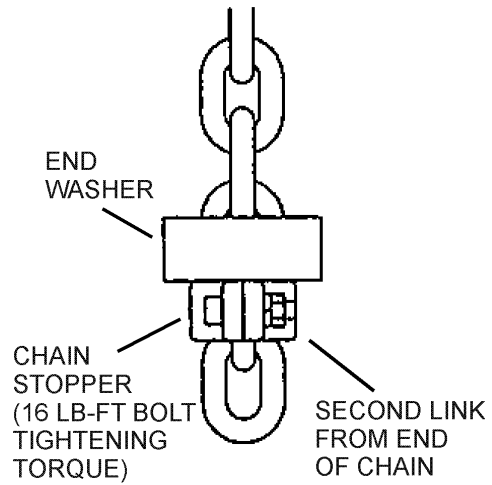
1. Remove the Set Piece and associated hardware and the two (2) MX80 hex socket head cap screw (HSHCS) from the hoist. Reference Figure 1.
2. Remove Chain Down Stopper to install the End Washer, then reinstall Chain Down Stopper on second chain link from end. Tighten bolt to 16 LB-FT. Reference Figure 2.
3. Install the steel chain container assembly (SCCA) using the two (2) M8X100 HSHCS, apply Loctite 242 or equivalent to the bolts and torque to 21 LB-FT, place the end of chain into SCC. Reference Figure 3.
4. Install the two (2) M8X15 HSHCS's and the one (1) M8X20 HSHCS, apply Loctite 242 or equivalent and torque to 21 LB-FT. Reference Figure 4.

Figure 1 – Installation Procedure for 3 Ton and 6 Ton Models



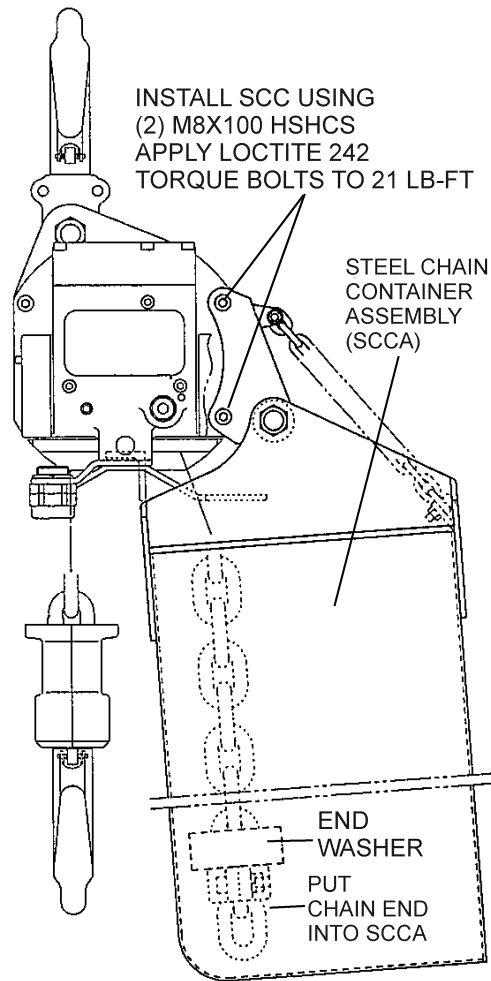
Remove Set Piece, (2) M8X12 HSHCS's, (1) M8X30 HSHCS and (1) Washer and (2) M8X80 HSHCS's.

Figure 2 – Installation Procedure for 3 Ton and 6 Ton Models



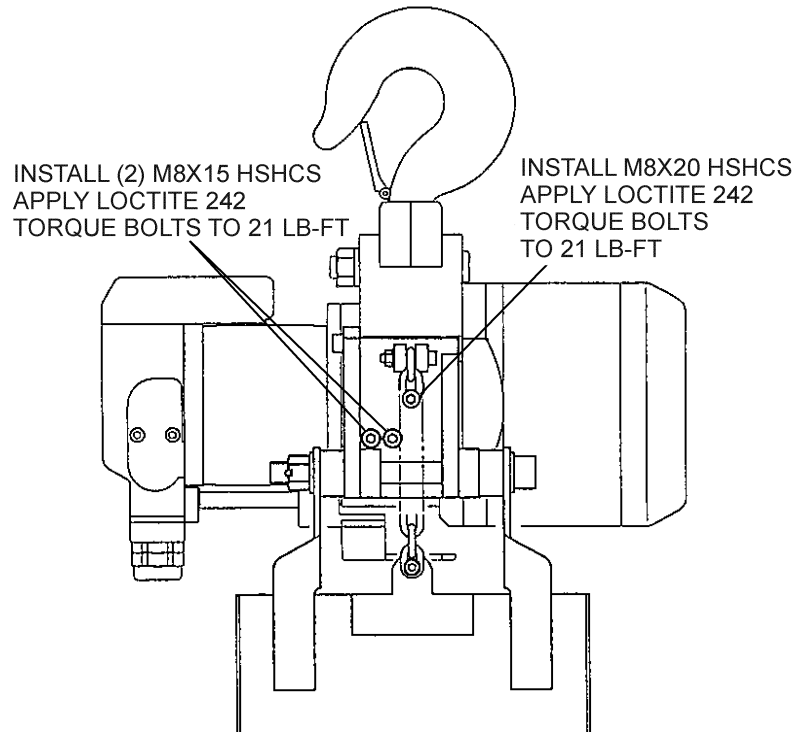
Install End Washer and tighten Chain Stopper Bolt to 16 LB-FT.

Figure 3 – Installation Procedure for 3 Ton and 6 Ton Models



Install SCC using (2) M8X100 HSHCS, apply Loctite 242 to bolts and torque to 21 LB-FT, place end of chain into SCCA.

Figure 4 – Installation Procedure for 3 Ton and 6 Ton Models



Install (2) M8X15 and (1) M8X20 HSHCS's, apply Loctite 242 and torque to 21 LB-FT.

END