

PURPOSE

The purpose of this EDOC is to outline the method for adjusting and calibrating the slip clutch (overload limiter) on the CB hand chain hoist.

SCOPE

1. Calibrating Slip Clutch using Dynamometer.

PROCEDURE

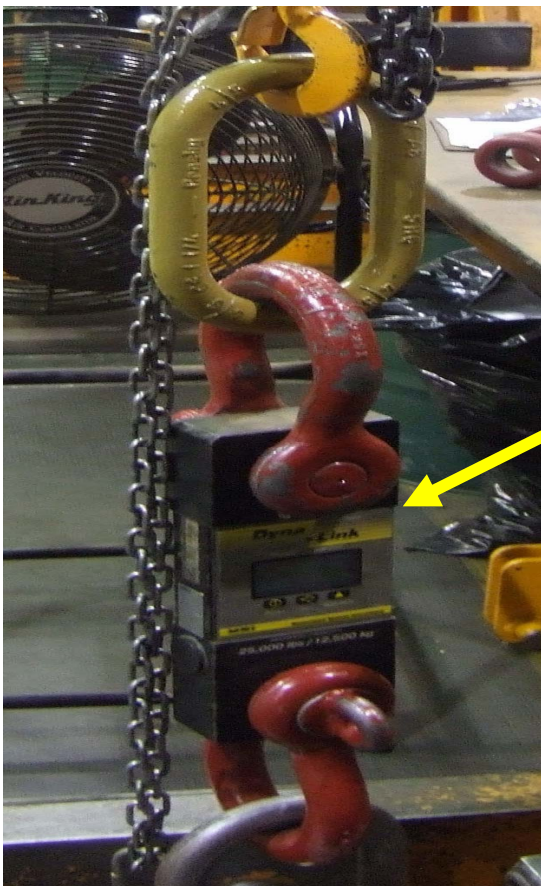
1. Hang the CB hoist; connect a dynamometer to the bottom hook (Fig. 1).
2. Connect dynamometer to a fixed position on the floor (Fig.1).
3. Pull the hand chain slowly in the lifting direction.
4. When the slip clutch is activated (slipping), read the dynamometer.
5. If adjustment is required, remove 3 nuts on hand wheel cover then remove cover (Fig. 2).
6. Bend locking tab down on shake proof washer to free locknut (Fig. 3)
7. Adjust the lock nut to change the setting of the slip clutch (Fig. 3).
8. The lock nut can be tightened by turning it clockwise which will allow unit to lift more and loosened by turning it counterclockwise which will decrease the lifting capacity.
9. After adjusting the lock nut to the desired location, bend one of the locking tabs from the washer into one of the notches on the lock nut and replace hand wheel cover.

*adjustment of the locknut can change the activating range of the slip clutch from 1.1 to 1.8 times the hoist capacity.

GENERAL USE

EDOC0418
Rev. 00
4/14/2008

Fig. 1



Dynamometer

Fig. 2

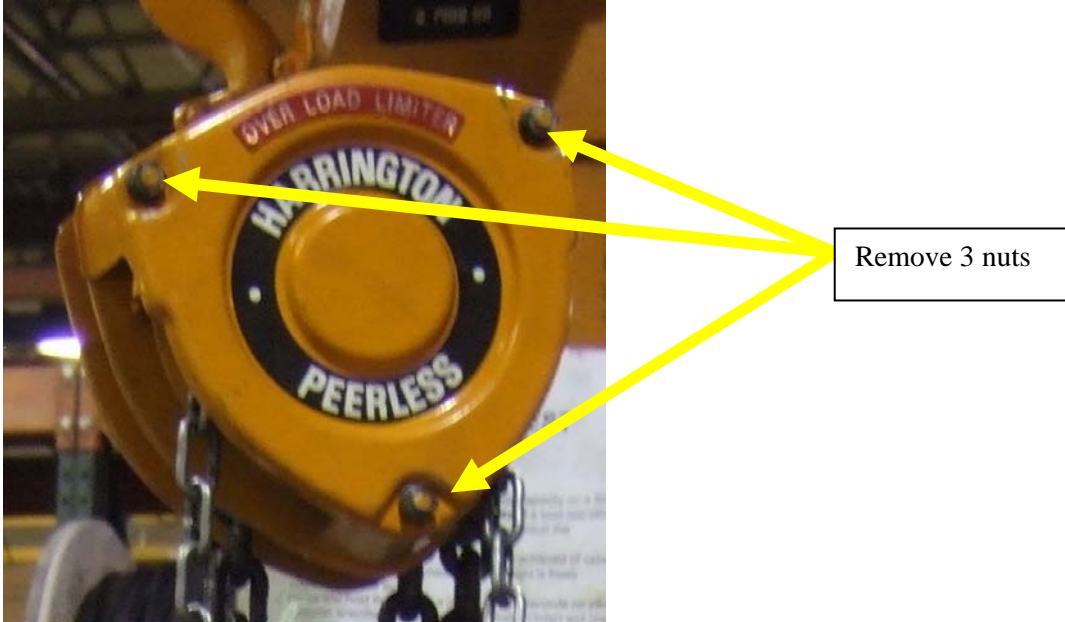


Fig. 3

