



# ER, ERM, ERG & ERP Electric Chain Hoist

## 8 to 20 Ton, Model ER1A, 6.2 Hp Version

### Specifications and Dimensions

#### Purpose:

To provide dimension and specification information large capacity (8 to 20 Ton) for hook mount, motorized trolley and manual trolley versions of single and dual speed ER model electric chain hoist.

#### Single Speed Specifications:

Cap. (Tons)	Product Code	Standard Lift (ft)	Push Button Cord L (ft)	Lifting Speed (ft/min)	Lifting Motor 3 Phase 60 Hz			Load Chain Diameter (mm) x Chain Fall Lines	Net Weight (lbs)	Weight for Additional One Foot of Lift (lbs)
					Output (Hp)	Rated Current (amps)				
						@208 - 230V	@460V			
8	ER080S*	10	8.7	9	6.2	25.1	12.6	11.2 x 3	452	5.9
10	ER100L		9.2	7	6.2	25.1	12.6	11.2 x 4	611	8.1
10	ER100L-LG		8.7	7	6.2	25.1	12.6	11.2 x 4	509	8.1
10	ER100S		9.2	14	6.2 x 2	25.1 x 2	12.6 x 2	11.2 x 4	710	8.1
15	ER150S		10.5	9	6.2 x 2	25.1 x 2	12.6 x 2	11.2 x 6	924	12.1
20	ER200S			7	6.2 x 2	25.1 x 2	12.6 x 2	11.2 x 8	1091	16.1

\*Available lug mount only. Push button cord dimension (L) is to center of lug hole.

#### Single Speed Dimensions:

Cap. (Tons)	Product Code	Headroom C (in)	a (in)	b (in)	d (in)	e (in)	g (in)	h (in)	i (in)
8	ER080S	42.0	30.9	23.8	15.5	15.5	2.4	11.3	7.5
10	ER100L	52.6	30.9	39.4	15.5	15.5	2.4	14.0	20.4
10	ER100L-LG	39.7	30.9	28.0	15.5	15.5	2.4	14.0	8.9
10	ER100S	52.6	30.9	34.2	15.5	15.5	2.4	-	-
15	ER150S	60.6	30.9	41.3	15.5	15.5	3.1	-	-
20	ER200S	65.0	30.9	49.1	15.5	15.5	3.4	-	-

#### Dual Speed Specifications:

Cap. (Tons)	Product Code	Standard Lift (ft)	Push Button Cord L (ft)	Lifting Speed (ft/min)	Lifting Motor 3 Phase 60 Hz			Load Chain Diameter (mm) x Chain Fall Lines	Net Weight (lbs)	Weight for Additional One Foot of Lift (lbs)
					Output (Hp)	Rated Current (amps)				
						@208 - 230V	@460V			
8	ER080SD*	10	8.7	9/3	6.2/2.0	24.1/10.6	12.1/5.3	11.2 x 3	503	5.9
10	ER100LD		9.2	7/2.5	6.2/2.0	24.1/10.6	12.1/5.3	11.2 x 4	661	8.1
10	ER100LD-LG		8.7	7/2.5	6.2/2.0	24.1/10.6	12.1/5.3	11.2 x 4	560	8.1
10	ER100SD		9.2	14/5	6.2/2.0 x 2	24.1/10.6 x 2	12.1/5.3 x 2	11.2 x 4	805	8.1
15	ER150SD		10.5	9/3	6.2/2.0 x 2	24.1/10.6 x 2	12.1/5.3 x 2	11.2 x 6	1025	12.1
20	ER200SD			7/2.5	6.2/2.0 x 2	24.1/10.6 x 2	12.1/5.3 x 2	11.2 x 8	1190	16.1

\*Available lug mount only. Push button cord dimension (L) is to center of lug hole

#### Dual Speed Dimensions:

Cap. (Tons)	Product Code	Headroom C (in)	a (in)	b (in)	d (in)	e (in)	g (in)	h (in)	i (in)
8	ER080SD	42.0	32.2	23.8	15.5	16.8	2.4	11.3	7.5
10	ER100LD	52.6	32.2	39.4	15.5	16.8	2.4	14.0	20.4
10	ER100LD-LG	39.7	32.2	28.0	15.5	16.8	2.4	14.0	8.9
10	ER100SD	52.6	33.5	34.2	16.8	16.8	2.4	-	-
15	ER150SD	60.6	33.5	41.3	16.8	16.8	3.1	-	-
20	ER200SD	65.0	33.5	49.1	16.8	16.8	3.4	-	-

**Specifications – Single Speed Hoist with Single Speed Trolley:**

Cap. (Tons)	Product Code	Standard Lift (ft)	Push Button Cord L (ft)	Lifting Speed (ft/min)	Traversing Speed (ft/min)	Lifting Motor 3 Phase 60 Hz			Traversing Motor 3 Phase 60 Hz			Flange Width Adjustability B (in)		Minimum Allow. Radius for curve (in)	Load Chain Diameter (mm) x Chain Fall Lines	Net Weight (lbs)	Weight for Additional One Foot of Lift (lbs)
						Output (Hp)	Rated Current (amps)		Output (Hp)	Rated Current (amps)		Standard	Optional				
							@208 - 230V	@460V		@208 - 230V	@460V						
8	ERM080S-L	10	9.2	9	40	6.2	25.1	12.6	1.0	5.1	2.5	5.50 to 8.66	8.67 to 12.00	98.4	11.2 x 3	664	5.9
10	ERM100L-L			7		6.2	25.1	12.6	1.0	5.1	2.5			98.4	11.2 x 4	721	8.1
10	ERM100S-L			14		6.2 x 2	25.1 x 2	12.6 x 2	1.0	5.1	2.5			98.4	11.2 x 4	944	8.1
15	ERM150S-L			9		6.2 x 2	25.1 x 2	12.6 x 2	1.0 x 2	5.1 x 2	2.5 x 2			∞	11.2 x 6	1329	12.1
20	ERM200S-L			7		6.2 x 2	25.1 x 2	12.6 x 2	1.0 x 2	5.1 x 2	2.5 x 2			∞	11.2 x 8	1453	16.1

**Dimensions – Single Speed Hoist with Single Speed Trolley:**

Cap. (Tons)	Product Code	Headroom C (in)	b (in)	b' (in)	d (in)	e (in)	e' (in)	g (in)	i (in)	j (in)	k (in)	m (in)	n (in)	r (in)	t (in)
8	ERM080S-L	47.6	19.7	22.9	11.2	20.9	8.8	2.4	6.89	3.5	6.9	10.6	7.5	6.0	2.76
10	ERM100L-L	45.7	19.7	22.9	11.2	20.9	8.8	2.4	6.89	3.1	6.9	10.6	7.5	6.0	2.76
10	ERM100S-L	46.3	19.7	22.9	11.2	20.9	8.8	2.4	6.89	3.1	6.9	10.6	7.5	6.0	2.76
15	ERM150S-L	51.4	40.2	43.4	11.2	20.9	8.8	3.1	6.89	3.3	6.9	10.6	28.0	6.0	2.76
20	ERM200S-L	52.8	40.2	43.4	11.2	20.9	8.8	3.4	6.89	3.1	6.9	10.6	28.0	6.0	2.76

**Specifications – Dual Speed Hoist with Single Speed Trolley:**

Cap. (Tons)	Product Code	Standard Lift (ft)	Push Button Cord L (ft)	Lifting Speed (ft/min)	Traversing Speed (ft/min)	Lifting Motor 3 Phase 60 Hz			Traversing Motor 3 Phase 60 Hz			Flange Width Adjustability B (in)		Minimum Allow. Radius for curve (in)	Load Chain Diameter (mm) x Chain Fall Lines	Net Weight (lbs)	Weight for Additional One Foot of Lift (lbs)
						Output (Hp)	Rated Current (amps)		Output (Hp)	Rated Current (amps)		Standard	Optional				
							@208 - 230V	@460V		@208 - 230V	@460V						
8	ERM080SD-L	10	9.2	9/3	40	6.2/2.0	24.1/10.6	12.1/5.3	1.0	5.1	2.5	5.50 to 8.66	8.67 to 12.00	98.4	11.2 x 3	721	5.9
10	ERM100LD-L			7/2.5		6.2/2.0	24.1/10.6	12.1/5.3	1.0	5.1	2.5			98.4	11.2 x 4	780	8.1
10	ERM100SD-L			14/5		6.2/2.0 x 2	24.1/10.6 x 2	12.1/5.3 x 2	1.0	5.1	2.5			98.4	11.2 x 4	1098	8.1
15	ERM150SD-L			9/3		6.2/2.0 x 2	24.1/10.6 x 2	12.1/5.3 x 2	1.0 x 2	5.1 x 2	2.5 x 2			∞	11.2 x 6	1493	12.1
20	ERM200SD-L			7/2.5		6.2/2.0 x 2	24.1/10.6 x 2	12.1/5.3 x 2	1.0 x 2	5.1 x 2	2.5 x 2			∞	11.2 x 8	1616	16.1

**Dimensions – Dual Speed Hoist with Single Speed Trolley:**

Cap. (Tons)	Product Code	Headroom C (in)	b (in)	b' (in)	d (in)	e (in)	e' (in)	g (in)	i (in)	j (in)	k (in)	m (in)	n (in)	r (in)	t (in)
8	ERM080SD-L	47.6	19.7	22.9	11.2	20.9	8.8	2.4	6.89	3.5	6.9	10.6	7.5	6.0	2.76
10	ERM100LD-L	45.7	19.7	22.9	11.2	20.9	8.8	2.4	6.89	3.1	6.9	10.6	7.5	6.0	2.76
10	ERM100SD-L	46.3	19.7	22.9	11.2	20.9	11.0	2.4	6.89	3.1	6.9	12.7	7.5	6.0	2.76
15	ERM150SD-L	51.4	40.2	43.4	11.2	20.9	11.0	3.1	6.89	3.3	6.9	12.7	28.0	6.0	2.76
20	ERM200SD-L	52.8	40.2	43.4	11.2	20.9	11.0	3.4	6.89	3.1	6.9	12.7	28.0	6.0	2.76

**Specifications – Single Speed Hoist with Geared Trolley:**

Cap. (Tons)	Product Code	Standard Lift (ft)	Push Button Cord L (ft)	Lifting Speed (ft/min)	Lifting Motor 3 Phase 60 Hz			Flange Width Adjustability B (in)		Minimum* Allow. Radius for curve (in)	Load Chain Diameter (mm) x Chain Fall Lines	Net Weight (lbs)	Weight for Additional One Foot of Lift (lbs)
					Output (Hp)	Rated Current (amps)		Standard	Optional				
						@208 - 230V	@460V						
8	ERG080S	10	9.2	9	6.2	25.1	12.6	5.50 to 8.66	8.67 to 12.00	118.1	11.2 x 3	650	6.6
10	ERG100L			7	6.2	25.1	12.6			118.1	11.2 x 4	710	8.7
10	ERG100S			14	6.2 x 2	25.1 x 2	12.6 x 2			118.1	11.2 x 4	944	8.7
15	ERG150S			9	6.2 x 2	25.1 x 2	12.6 x 2			∞	11.2 x 6	1329	13.4
20	ERG200S			7	6.2 x 2	25.1 x 2	12.6 x 2			∞	11.2 x 8	1453	17.5

**Dimensions – Single Speed Hoist with Geared Trolley:**

Cap. (Tons)	Product Code	Headroom C (in)	E (ft)	a (in)	b (in)	e (in)	e' (in)	g (in)	h (in)	i (in)	j (in)	k (in)	k' (in)	m (in)	n (in)	r (in)	t (in)	u (in)
8	ERG080S	47.6	11.4	16.2	18.9	20.9	1.6	2.4	7.3	6.10	3.5	6.7	6.5	3.4	7.7	6.0	2.76	8.4
10	ERG100L	45.7	11.4	16.2	18.9	20.9	1.6	2.4	7.3	6.10	3.1	6.7	6.5	3.4	7.7	6.0	2.76	8.4
10	ERG100S	46.3	11.4	16.2	18.9	20.9	8.8	2.4	7.3	6.10	3.1	6.7	6.5	10.6	7.7	6.0	2.76	8.4
15	ERG150S	51.4	13.4	16.2	39.4	20.9	8.8	3.1	7.3	6.10	3.3	6.7	6.5	10.6	28.2	6.0	2.76	8.4
20	ERG200S	52.8	13.4	16.2	39.4	20.9	8.8	3.4	7.3	6.10	3.1	6.7	6.5	10.6	28.2	6.0	2.76	8.4

**Specifications – Single Speed Hoist with Push Trolley:**

Cap. (Tons)	Product Code	Standard Lift (ft)	Push Button Cord L (ft)	Lifting Speed (ft/min)	Lifting Motor 3 Phase 60 Hz			Flange Width Adjustability B (in)		Minimum* Allow. Radius for curve (in)	Load Chain Diameter (mm) x Chain Fall Lines	Net Weight (lbs)	Weight for Additional One Foot of Lift (lbs)
					Output (Hp)	Rated Current (amps)		Standard	Optional				
						@208 - 230V	@460V						
8	ERP080S	10	9.2	9	6.2	25.1	12.6	5.50 to 8.66	8.67 to 12.00	118.1	11.2 x 3	624	5.9
10	ERP100L			7	6.2	25.1	12.6			118.1	11.2 x 4	684	8.1
10	ERP100S			14	6.2 x 2	25.1 x 2	12.6 x 2			118.1	11.2 x 4	918	8.1

**Dimensions – Single Speed Hoist with Push Trolley:**

Cap. (Tons)	Product Code	Headroom C (in)	a (in)	b (in)	e (in)	e' (in)	g (in)	h (in)	i (in)	j (in)	k (in)	m (in)	n (in)	r (in)	t (in)
8	ERP080S	47.6	4.3	18.9	20.9	1.6	2.4	7.3	6.10	3.5	6.7	3.4	7.7	6.0	2.76
10	ERP100L	45.7	4.3	18.9	20.9	1.6	2.4	7.3	6.10	3.1	6.7	3.4	7.7	6.0	2.76
10	ERP100S	46.3	4.3	18.9	20.9	8.8	2.4	7.3	6.10	3.1	6.7	10.6	7.7	6.0	2.76

### Specifications – Dual Speed Hoist with Geared Trolley:

Cap. (Tons)	Product Code	Standard Lift (ft)	Push Button Cord L (ft)	Lifting Speed (ft/min)	Lifting Motor 3 Phase 60 Hz			Flange Width Adjustability B (in)		Minimum Allow. Radius for curve (in)	Load Chain Diameter (mm) x Chain Fall Lines	Net Weight (lbs)	Weight for Additional One Foot of Lift (lbs)
					Output (Hp)	Rated Current (amps)		Standard	Optional				
						@208 - 230V	@460V						
8	ERG080SD	10	9.2	9/3	6.2/2.0	24.1/10.6	12.1/5.3	5.50 to 8.66	8.67 to 12.00	118.1	11.2 x 3	701	6.6
10	ERG100LD			7/2.5	6.2/2.0	24.1/10.6	12.1/5.3			118.1	11.2 x 4	761	8.7
10	ERG100SD			14/5	6.2/2.0 x 2	24.1/10.6 x 2	12.1/5.3 x 2			118.1	11.2 x 4	1045	8.7
15	ERG150SD			9/3	6.2/2.0 x 2	24.1/10.6 x 2	12.1/5.3 x 2			∞	11.2 x 6	1431	13.4
20	ERG200SD			7/2.5	6.2/2.0 x 2	24.1/10.6 x 2	12.1/5.3 x 2			∞	11.2 x 8	1554	17.5

### Dimensions – Dual Speed Hoist with Geared Trolley:

Cap. (Tons)	Product Code	Headroom C (in)	E (ft)	a (in)	b (in)	e (in)	e' (in)	g (in)	h (in)	i (in)	j (in)	k (in)	k' (in)	m (in)	n (in)	r (in)	t (in)	u (in)
8	ERG080SD	47.6	11.4	16.2	18.9	20.9	1.6	2.4	7.3	6.10	3.5	6.7	6.5	3.4	7.7	6.0	2.76	8.4
10	ERG100LD	45.7	11.4	16.2	18.9	20.9	1.6	2.4	7.3	6.10	3.1	6.7	6.5	3.4	7.7	6.0	2.76	8.4
10	ERG100SD	46.3	11.4	16.2	18.9	20.9	8.8	2.4	7.3	6.10	3.1	6.7	6.5	10.6	7.7	6.0	2.76	8.4
15	ERG150SD	51.4	13.4	16.2	39.4	20.9	8.8	3.1	7.3	6.10	3.3	6.7	6.5	10.6	28.2	6.0	2.76	8.4
20	ERG200SD	52.8	13.4	16.2	39.4	20.9	8.8	3.4	7.3	6.10	3.1	6.7	6.5	10.6	28.2	6.0	2.76	8.4

### Specifications – Dual Speed Hoist with Push Trolley:

Cap. (Tons)	Product Code	Standard Lift (ft)	Push Button Cord L (ft)	Lifting Speed (ft/min)	Lifting Motor 3 Phase 60 Hz			Flange Width Adjustability B (in)		Minimum Allow. Radius for curve (in)	Load Chain Diameter (mm) x Chain Fall Lines	Net Weight (lbs)	Weight for Additional One Foot of Lift (lbs)
					Output (Hp)	Rated Current (amps)		Standard	Optional				
						@208 - 230V	@460V						
8	ERP080SD	10	9.2	9/3	6.2/2.0	24.1/10.6	12.1/5.3	5.50 to 8.66	8.67 to 12.00	118.1	11.2 x 3	675	5.9
10	ERP100LD			7/2.5	6.2/2.0	24.1/10.6	12.1/5.3			118.1	11.2 x 4	734	8.1
10	ERP100SD			14/5	6.2/2.0 x 2	24.1/10.6 x 2	12.1/5.3 x 2			118.1	11.2 x 4	1019	8.1

### Dimensions – Dual Speed Hoist with Push Trolley:

Cap. (Tons)	Product Code	Headroom C (in)	a (in)	b (in)	e (in)	e' (in)	g (in)	h (in)	i (in)	j (in)	k (in)	m (in)	n (in)	r (in)	t (in)
8	ERP080SD	47.6	4.3	18.9	20.9	1.6	2.4	7.3	6.10	3.5	6.7	3.4	7.7	6.0	2.76
10	ERP100LD	45.7	4.3	18.9	20.9	1.6	2.4	7.3	6.10	3.1	6.7	3.4	7.7	6.0	2.76
10	ERP100SD	46.3	4.3	18.9	20.9	8.8	2.4	7.3	6.10	3.1	6.7	10.6	7.7	6.0	2.76

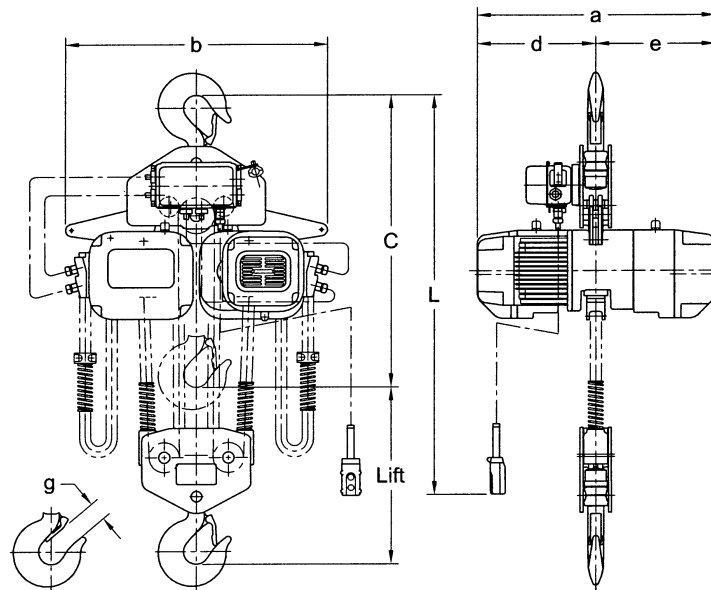


Figure 1 – ER Hook Mount, Single and Dual Speed (ER100S)

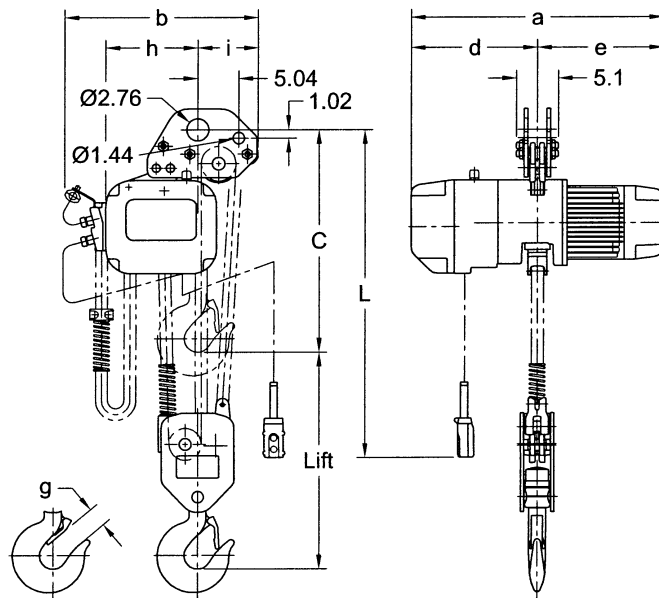


Figure 2 – ER Lug Mount, Single and Dual Speed (ER080S)

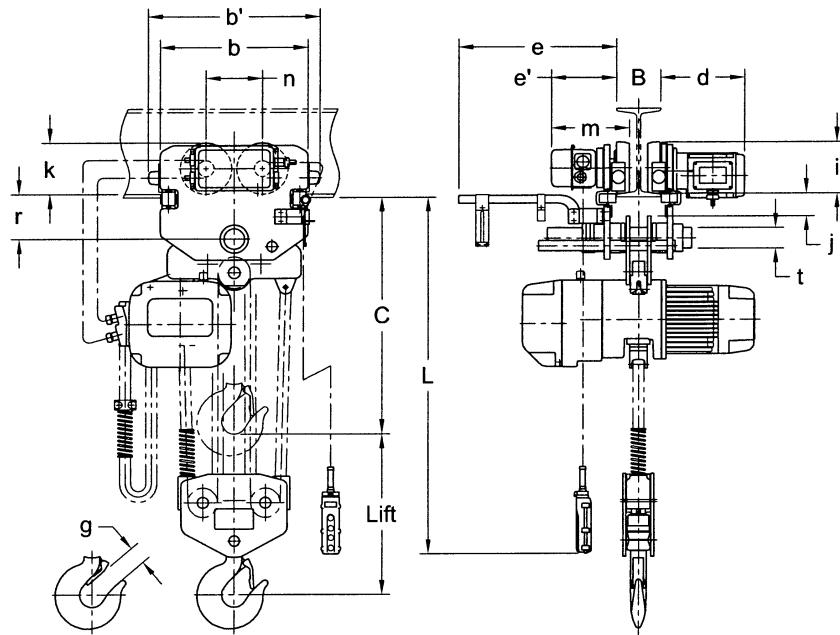


Figure 3 – ER with Motorized Trolley, Single and Dual Speed (ERM100L-L)

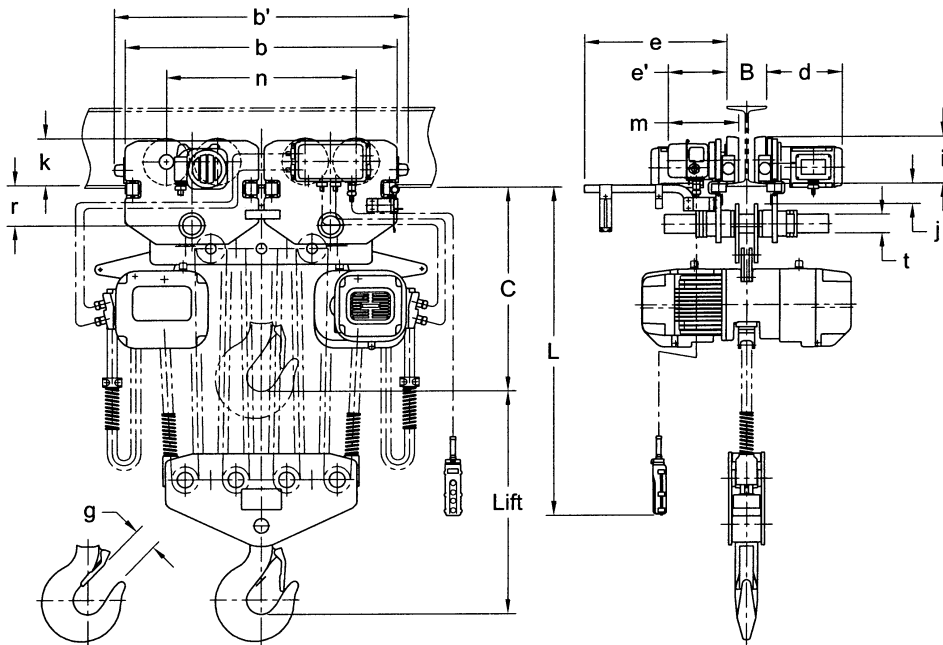


Figure 4 – ER with Motorized Trolley, Single and Dual Speed (ERM200S-L)

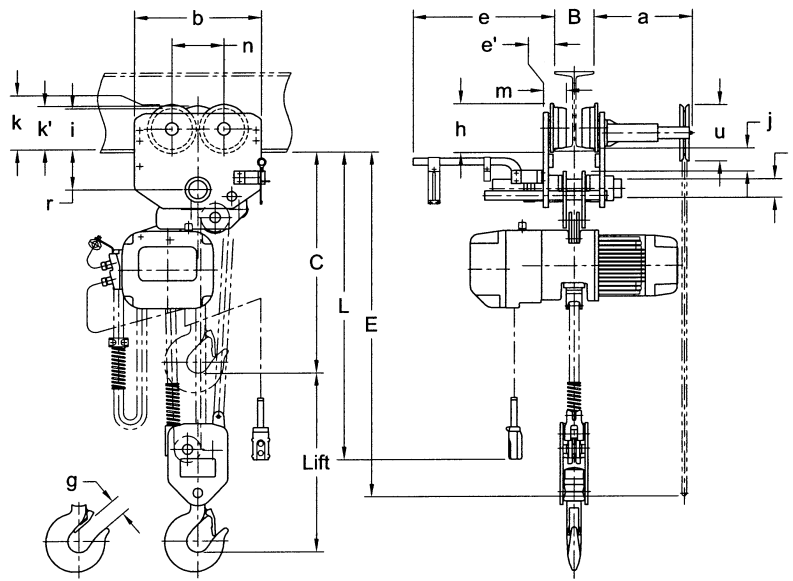


Figure 5 – ER with Geared Trolley, Single and Dual Speed (ERG080S)

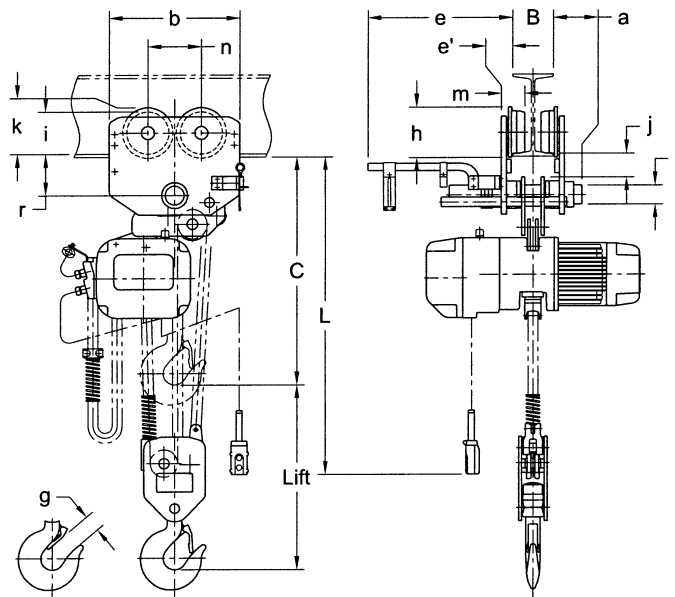


Figure 6 – ER with Push Trolley, Single and Dual Speed (ERP080S)