

PURPOSE

To provide dimensional information and specifications for the HPC500 End Trucks.

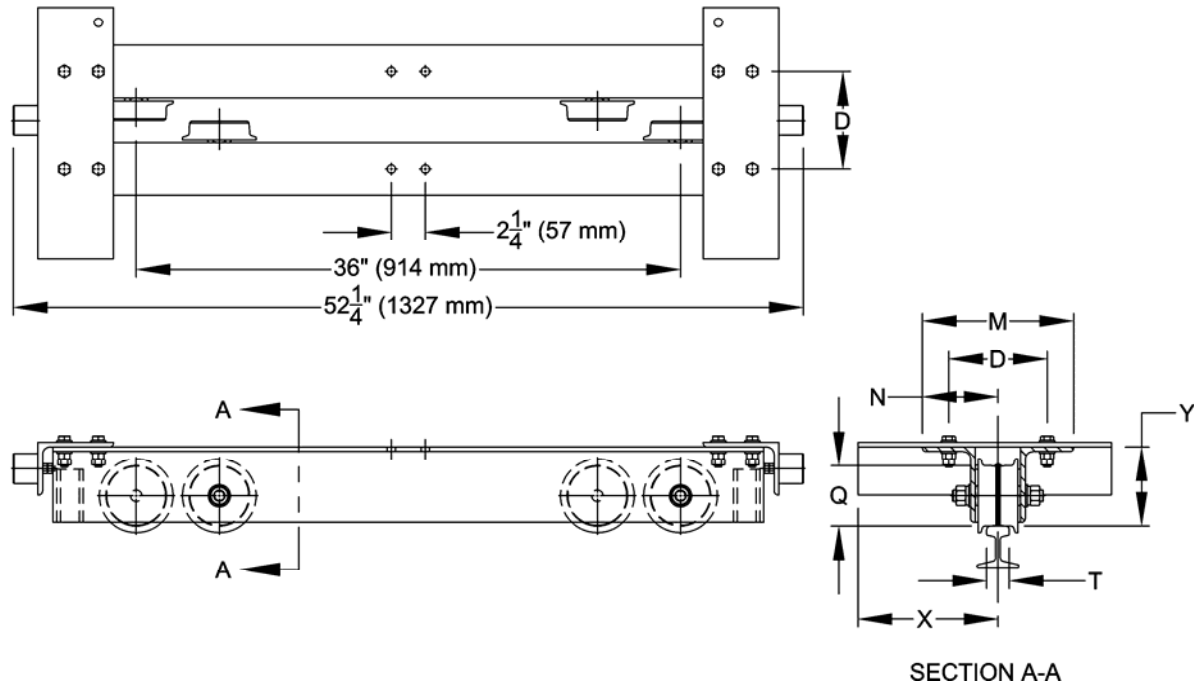
SCOPE

Outline drawings and data for the HPC505, HPC510, and HPC520 in the Top Running and Underhung configurations.

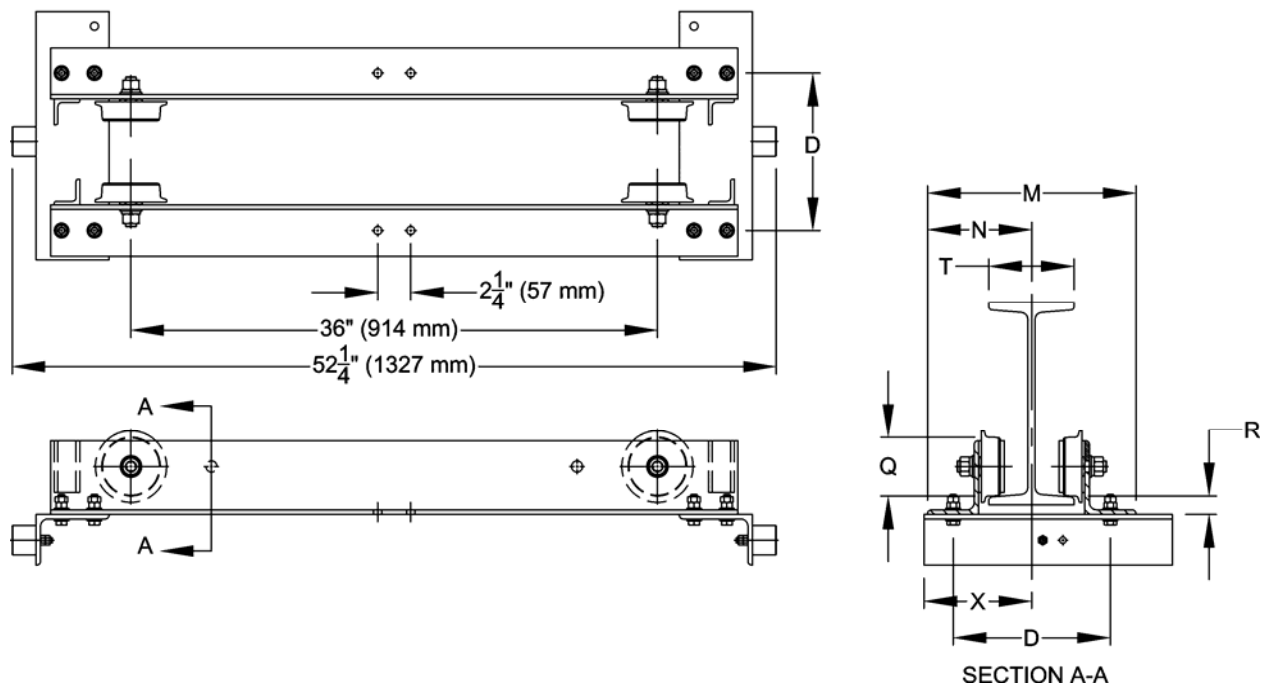
TABLE OF CONTENTS

<u>Page</u>	<u>Type</u>	<u>Description</u>
2	Line Drawing	HPC500 Series Top Running End Truck
2	Line Drawing	HPC500 Series Underhung End Truck
3	Data Chart	HPC500 End Truck Imperial Dimensions and Specifications
3	Data Chart	HPC500 End Truck Metric Dimensions and Specifications
3	Data Chart	HPC500 Series Recommended Bridge Beams

HPC500 SERIES TOP RUNNING END TRUCK



HPC500 SERIES UNDERHUNG END TRUCK



Imperial Specifications & Dimensions

Cap. (Tons)	Max. Span (ft)	End Truck Product Code	T* Flange or Rail Head Width (in)		D** (in)	M** End Truck Frame Width (in)	N Runway Ctr. Line to Outer Edge of ET (in)	Q Wheel Tread Dia. (in)	X Width Beyond Span (in)	Y Wheel Running Surface to Bridge Beam (in)	R Wheel Running Surface to Bridge Beam (in)	End Truck Weight (lbs/pr)	
			Top Running	Under- hung									
1/2	24	HPC505	1.5 – 6	3 – 6	T + 4 ^{3/4}	T + 7.3	M/2	3.12	10 ^{1/8} – (T/2)	4.3	1.2	156	
1		HPC510						4.00					5.3
2		HPC520						4.88					

Metric Specifications & Dimensions

Cap. (Tons)	Max. Span (m)	End Truck Product Code	T* Flange or Rail Head Width (mm)		D** (mm)	M** End Truck Frame Width (mm)	N Runway Ctr. Line to Outer Edge of ET (mm)	Q Wheel Tread Dia. (mm)	X Width Beyond Span (mm)	Y Wheel Running Surface to Bridge Beam (mm)	R Wheel Running Surface to Bridge Beam (mm)	End Truck Weight (kg/pr)	
			Top Running	Under- hung									
1/2	7.3	HPC505	38 – 152	76 – 152	T + 121	T + 185	M/2	79	257 – (T/2)	109	30	70.8	
1		HPC510						102					135
2		HPC520						124					

* Consult factory for widths or flanges greater than 6" (152 mm).

** Formula shown is for S beams & ASCE rail. Add 1/4" (6 mm) for W beams and rectangular bar.

RECOMMENDED BRIDGE BEAMS				
<ol style="list-style-type: none"> Includes 15% Allowance for Electric Hoist Load Factor. Based on Harrington's electric chain hoist product. For spans greater than 10 ft (3.0 m), braces between end truck and bridge beam are recommended. 				
Cap. (Tons)	Maximum Allowable Span: ft (m)			
	10 (3.0)	15 (4.6)	20 (6.1)	24 (7.3)
1/2	S8 X 18.4	S8 X 18.4	S8 X 18.4	S10 X 25.4
1	S8 X 18.4	S8 X 18.4	S10 X 25.4	S10 X 25.4
2	S10 X 25.4	S10 X 25.4	S12 X 31.8	S12 X 31.8 C8 X 11.5