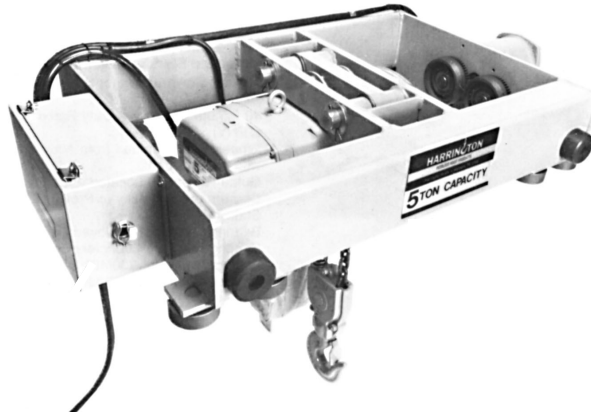


SPECIFICATIONS

MAX-E-LIFT Electric Chain Hoists - Standard features.

- Class H3 Duty Rated 40 Minute Motors (TENV)
- Class B Insulation
- Meets NEMA 3R Specifications
- Two Brakes: Motor Brake of Pull Rotor
- Type and Weston Mechanical Load Brake
- Voltages Available: 230/460-3-60
- Upper and Lower Limit Switches
- 48 Volt Control Circuit
- Helical Gears in Oil Bath
- Chain Container
- High Performance Contactor for Inching are Mechanically Interlocked



MAX-E-LIFT TROLLEY - Geared or Motorized Standard Features

- Tubular Construction for Strength and Rigidity
- 40 Minute Motors are Duty Rated (TENV)
- Wheels are Machined from Alloy Steel with a Flat Tread
- Guide Rollers (8) Located at all Four Corners of the Trolley to Provide Stability
- Bearings are Deep Grooved Ball Bearings and are Lubricated for Life
- Voltages Available: 230/460-3-60
- A Geared Hand Wheel Assembly Replaces the Motor on the Geared Trolley
- Trolley Bumpers

Chart IIA Electric Trolley and Electric Hoist

Cap. (Tons)	Trolley Single Speed		Trolley Dual Speed		No. of Falls	Trolley Speed (ft/min)		Lifting Speed (ft/min)		Total HP				Rated Current Total Amp @ 460V				Net Weight (lbs.)		Weight for Additional One Foot of Lift (lbs.)
	Hoist Speed (1) Single (2) Dual		Hoist Speed (3) Single (4) Dual			S	D	S	D	(1)	(2)	(3)	(4)	(1)	(2)	(3)	(4)	1 & 3	2 & 4	
1	MTH-1MS-LHS	MTH-1MS-LHD	MTH-1MD-LHS	MTH-1MD-LHD	2	40	80/20	13	14/5	1.5	1.5/0.9	1.5/1.1	1.5/0.5	3.8	3.9/2.6	3.8/3.5	3.9/2.3	500	525	1.1
	MTH-1MS-SHS	MTH-1MS-SHD	MTH-1MD-SHS	MTH-1MD-SHD	1	40	80/20	26	27/9	2.5	2.5/1.2	2.5/2.1	2.5/0.8	5.3	5.5/3.5	5.3/5.0	5.5/3.2	525	550	.8
2	MTH-2MS-LHS	MTH-2MS-LHD	MTH-2MD-LHS	MTH-2MD-LHD	2	40	80/20	13	13.5/4.5	2.5	2.5/1.2	2.5/2.1	2.5/0.8	5.3	5.3/3.5	5.3/5.0	5.5/3.2	550	570	1.5
	MTH-2MS-SHS	MTH-2MS-SHD	MTH-2MD-SHS	MTH-2MD-SHD	1	40	80/20	26	26/8.5	4.5	4.5/1.8	4.5/4.1	4.5/1.4	9.0	9.4/6.5	9.0/8.7	9.4/6.2	630	685	1.5
3	MTH-3MS-SHS	MTH-3MS-SHD	MTH-3MD-SHS	MTH-3MD-SHD	2	40	80/20	17	17/5.5	5.0	5.0/2.3	5.0/4.3	5.0/1.6	9.7	10.2/7.2	9.7/9.1	10.1/6.6	730	785	3.3
5	MTH-5MS-SHS	MTH-5MS-SHD	MTH-5MD-SHS	MTH-5MD-SHD	2	40	80/20	10.5	10.5/3.5	5.0	5.0/2.3	5.0/4.3	5.0/1.6	9.7	10.1/7.2	9.7/9.1	10.1/6.6	750	800	4.0

Duty Rating (Min.)			
	Capacity	Single Speed	Dual Speed
Hoist	1 Ton L, 1 Ton S and 2 Ton L	50	40/40
	2 Ton S, 3 Ton S and 5 Ton S	40	30/30
Trolley	All	40	40/30

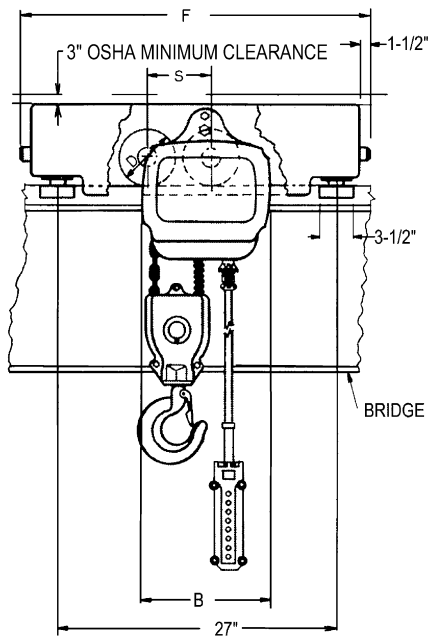
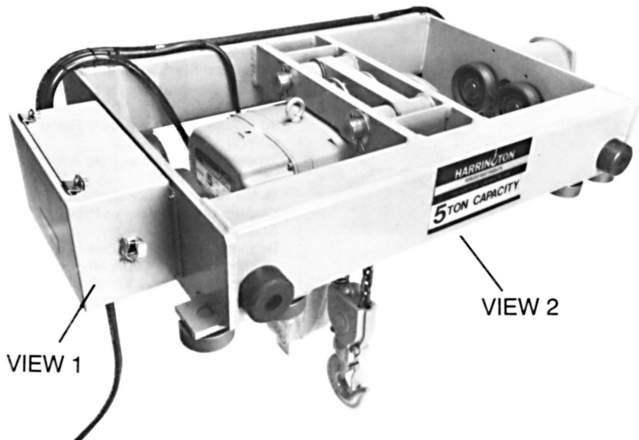
Chart IIB Max-E-Lift Geared Trolley and Electric Hoist

Cap. In (Tons)	Hoist Speed		No. of Falls	Lifting Speed (ft/min)		Total HP		Rated Current Total Amp @ 460V		Weight (lbs.)		Weight for Additional One Foot of Lift (lbs.)
	Single	Dual		S	D	S	D	S	D			
1	MTH-1G-LHS	MTH-1G-LHD	2	13	14/5	1	1/0.4	2.6	2.7/1.4	420	450	1.7
	MTH-1G-SHS	MTH-1G-SHD	1	26	27/9	2	2/0.7	4.1	4.3/2.3	450	475	1.4
2	MTH-2G-LHS	MTH-2G-LHD	2	13	13.5/4.5	2	2/0.7	4.1	4.3/2.3	470	500	2.1
	MTH-2G-SHS	MTH-2G-SHD	1	26	26/8.5	4	4/1.3	7.8	8.2/5.3	550	610	2.1
3	MTH-3G-SHS	MTH-3G-SHD	2	17	17/5.5	4	4/1.3	7.8	8.2/5.3	640	690	3.9
5	MTH-5G-SHS	MTH-5G-SHD	2	10.5	10.5/3.5	4	4/1.3	7.8	8.2/5.3	660	710	4.6

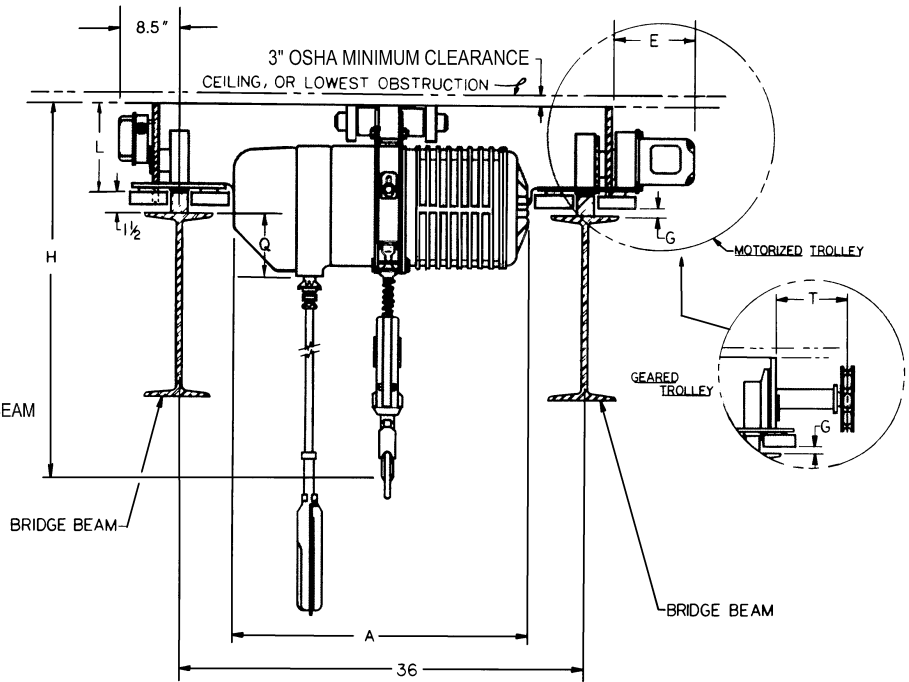
**Rated current @ 230vac is 2 times table value.

Standard Lift is 10 ft.
Standard Push button Station is 4 ft. less than lift
Standard Hand Chain drop for Geared Trolley is 4' less than lift.

DIMENSIONS



VIEW 1



VIEW 2

MAX-E-LIFT TROLLEY PHYSICAL DIMENSIONS (INCHES)																	
Cap (Tons)		A		B		D		E	F	G	H		L	Q	S		T
		Single Speed	Dual Speed	Single Speed	Dual Speed	motorized	geared				Single Speed	Dual Speed			motorized	geared	
1	L	18.0	21.5	8.7	8.7	4.3	3.4	9.2	34.2	0.7	22.1	23.1	6.5	3.7	5.0	5.4	10.8
	S	20.5	23.5	9.7	9.7						20.1	21.1					
2	L	20.5	23.5	9.7	9.7	4.3	3.4	9.2	34.2	0.7	25.8	26.8	6.5	3.7	5.0	5.4	10.8
	S	24.1	26.2	12.6	12.6						24.4	27.7					
3		24.1	26.2	12.6	12.6	5.5	4.6	11.5	34.2	0.6	30.4	32.2	7.6	5.5	6.1	7	10.8
5		24.1	26.2	12.6	12.6	5.5	4.6	11.5	34.2	0.6	32.0	33.4	7.6	5.5	6.1	7	10.8

Standard Lift is 10 ft.
Standard Push Button Station drop is 4 ft. less than lift
Standard Hand Chain drop for Geared Trolley is 4 ft. less than lift.