

Purpose: To describe the assembly procedure used to assemble the standard ER/MR push button pendant station.

Procedure:

1. Cut the pendant cable to the required length and with the correct number of conductors as described in EDOC61.
2. Attach the full ring lugs to wires on the push button pendant side of the cable. Ensure the lugs are crimped securely
3. Connect the full ring lugs to the terminals inside the pendant per the appropriate wiring diagram.
4. Secure the cable inside the pendant with the clamp. Ensure that approximately 3/16 of the cable outer jacket protrudes beyond the clamp.
5. Screw the two halves of the push button station together and connect the strain relief cable to the pendant using the pin and cotter pin.
6. Connect the 5P and 8P plug assembly as follows. See diagram "A" below:
 - a. Insert the cable into the cover, packing and plug body. Refer to Edoc0060 for proper packing size.
 - b. Slide shrink wrap over the wires.
 - c. Connect the wires to the contact pin and solder them.
 - d. Place the shrink wrap over the solder joint and heat to shrink over the solder assembly.
 - e. After all of the wires have been soldered, wrap tape around the wires and assemble the plug assembly.
 - f. Tighten setscrews "A" and "B".

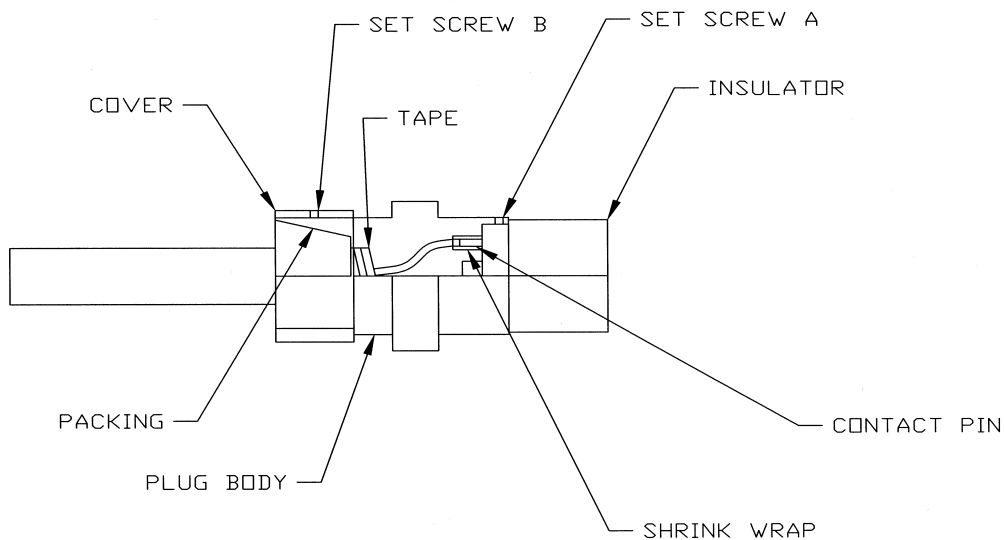


DIAGRAM "A"

7. Attach tie wraps and warning tag as shown in diagram "B".

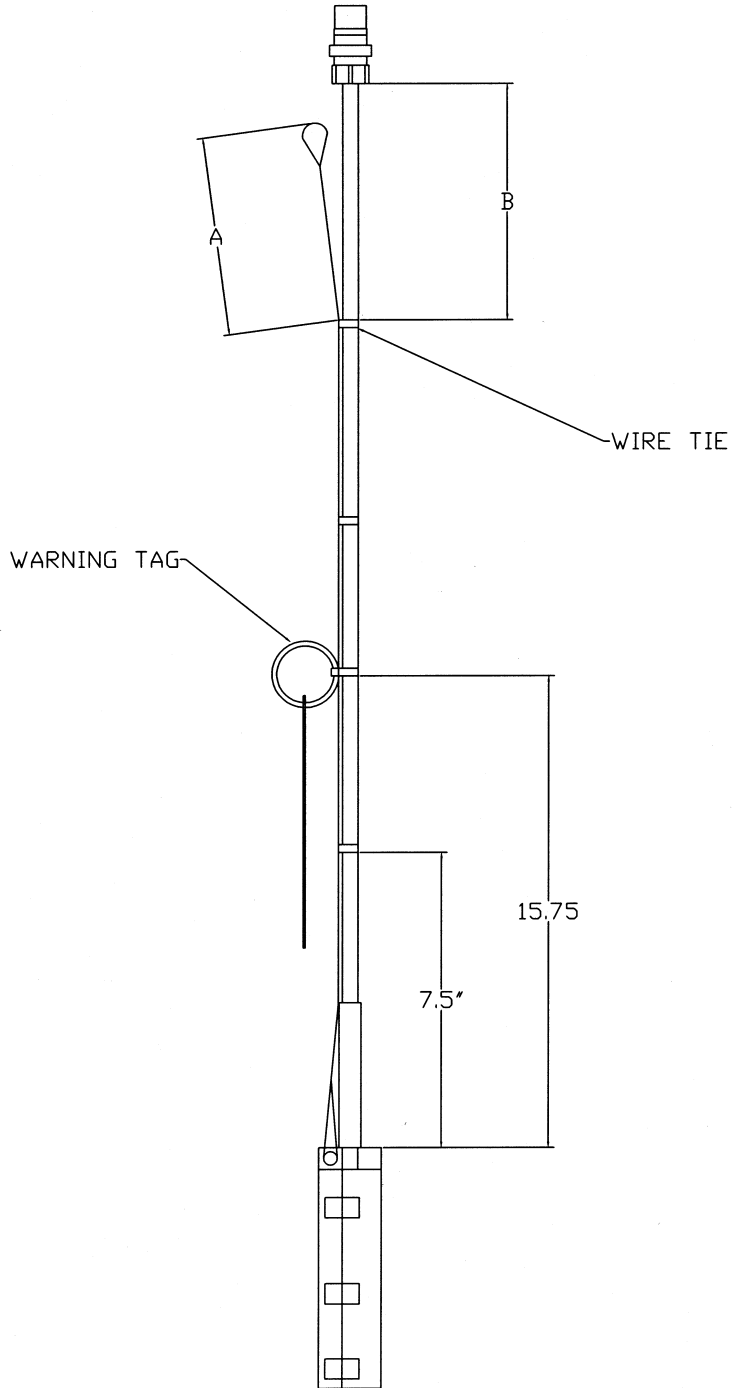


FIGURE "B"

<i>Hoist Model #</i>	<i>A Dimension</i>	<i>B Dimension</i>
ER001H-ER050L	4.75"	19"
ERP001H-ERP050L	4.75"	19"
ERG001H-ERG100L	4.75"	19"
ER100S-ER200S	9.5"	10"
ERG100S	9.5"	10"
ERG150S-ERG200S	4.75"	16"
ER001HD-ER050LD	4.75"	19"
ERG(P)001HD-ERG(P)050LD	4.75"	19"
ERM001H-ERM050L	4.75"	15"
ERM075S-ERM100L	4.75"	19"
ERM100S	9.5"	10"
ERM150S-ERM200S	4.75"	16"