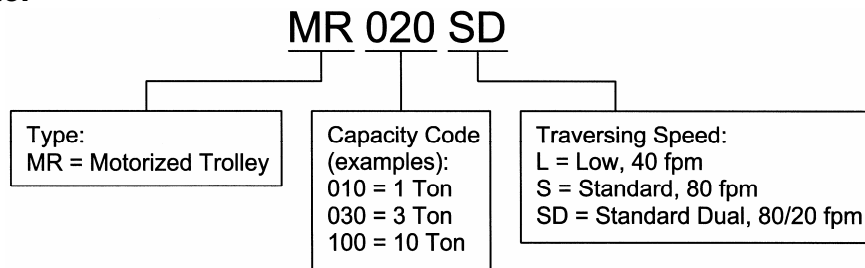


**Product Code:**



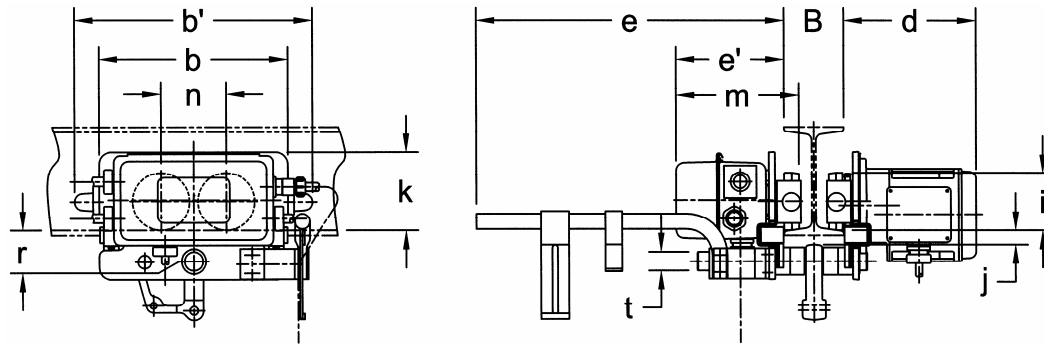
**Features:**

- MOTOR – Totally Enclosed (TENV) with Thermal Protection
- MOTOR BRAKE – Advanced Pull Rotor
- VOLTAGE – Standard 208-230/460V-3-60, Optional 575V-3-60, Special Voltages Available
- OPERATING ENVIRONMENT – Temperature -4° to +104°F (-20° to 40°C)  
– Humidity 85% or less
- ENCLOSURE RATING – Meets IP55
- DUTY RATING – Single Speed is 40% ED with 240 starts per hour  
Dual Speed - 40/20% ED with 120/240 starts per hour

**Imperial: Trolley Specifications:**

	Capacity (Ton)	Code	Standard Beam Flange Range (in)	Optional Beam Flange Range (in)	Min. Allowable Radius for Curve (in)	Motor			Approx. Net Weight (lbs)
						Output (Hp)	Current Draw (amps)		
							208V or 230V	460V	
SINGLE SPEED	1	MR010L/S	2.28 to 5.00	5.01 to 6.02 <u>OR</u> 6.03 to 12.00	31.5	0.5	3.2	1.6	66
	2	MR020L/S	3.23 to 6.02	6.03 to 7.02 <u>OR</u> 7.03 to 12.00	31.5	0.5	3.2	1.6	84
	3	MR030L/S	3.23 to 6.02	6.03 to 7.02 <u>OR</u> 7.03 to 12.00	39.4	0.5	3.2	1.6	104
	5	MR050L/S	3.94 to 7.01	7.02 to 7.60 <u>OR</u> 7.61 to 12.00	70.9	1.0	5.1	2.5	157
	8	MR080L	5.50 to 8.66	8.67 to 12.00	98.4	1.0	5.1	2.5	315
	10	MR100L	5.50 to 8.66	8.67 to 12.00	98.4	1.0	5.1	2.5	315
	15	MR150L	5.50 to 8.66	8.67 to 12.00	∞	1.0 x 2	5.1 x 2	2.5 x 2	611
	20	MR200L	5.50 to 8.66	8.67 to 12.00	∞	1.0 x 2	5.1 x 2	2.5 x 2	633
DUAL SPEED	1	MR010SD	2.28 to 5.00	5.01 to 6.02 <u>OR</u> 6.03 to 12.00	31.5	0.4/0.1	2.9/2.2	1.5/1.1	75
	2	MR020SD	3.23 to 6.02	6.03 to 7.02 <u>OR</u> 7.03 to 12.00	31.5	0.4/0.1	2.9/2.2	1.5/1.1	93
	3	MR030SD	3.23 to 6.02	6.03 to 7.02 <u>OR</u> 7.03 to 12.00	39.4	0.9/0.2	3.6/3.1	1.8/1.6	110
	5	MR050SD	3.94 to 7.01	7.02 to 7.60 <u>OR</u> 7.61 to 12.00	70.9	0.9/0.2	3.6/3.1	1.8/1.6	165

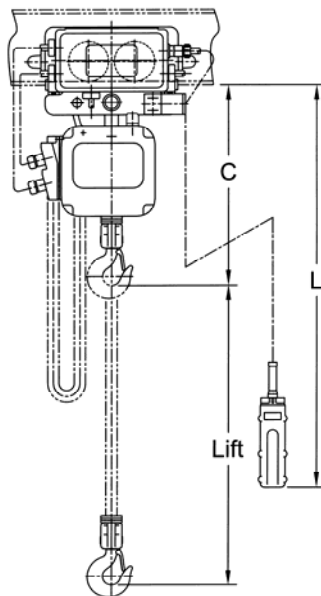
### Imperial: Trolley Dimensions:



	Code	b	b'	d	e	e'	i	j	k	m	n	r	t
Single Speed	MR010L/S	12.4	15.6	8.7	20.3	7.0	3.74	0.9	5.1	8.0	4.3	2.0	1.22
	MR020L/S	12.8	16.4	8.9	20.5	7.2	4.33	1.1	4.9	8.3	4.6	2.4	1.42
	MR030L/S	13.4	17.4	8.9	20.5	7.3	4.92	1.1	5.2	8.5	5.2	2.7	1.69
	MR050L/S	15.7	19.8	11.1	20.8	7.6	5.51	1.7	5.7	9.2	5.9	3.4	2.13
	MR080L	19.7	22.9	11.2	20.9	8.8	6.89	3.5	6.9	10.6	7.5	6.0	2.76
	MR100L	19.7	22.9	11.2	20.9	8.8	6.89	3.1	6.9	10.6	7.5	6.0	2.76
	MR150L	40.2	43.4	11.2	20.9	8.8	6.89	3.3	6.9	10.6	28.0	6.0	2.76
	MR200L	40.2	43.4	11.2	20.9	8.8	6.89	3.1	6.9	10.6	28.0	6.0	2.76
Dual Speed	MR010SD	12.4	15.6	10.6	20.3	7.0	3.74	0.9	5.1	8.0	4.3	2.0	1.22
	MR020SD	12.8	16.4	10.7	20.5	7.2	4.33	1.1	4.9	8.3	4.6	2.4	1.42
	MR030SD	13.4	17.4	10.8	20.5	7.3	4.92	1.1	5.2	8.5	5.2	2.7	1.69
	MR050SD	15.7	19.8	11.1	20.8	7.6	5.51	1.7	5.7	9.2	5.9	3.4	2.13

### Imperial: ERM/NERM Electric Hoist with Motorized Trolley Dimensions:

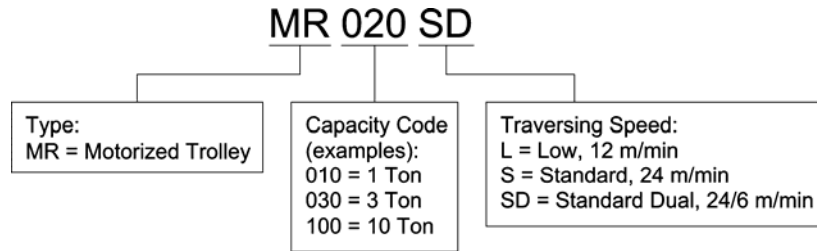
For complete hoist information see:  
 TECHNICAL INFORMATION  
 ER/NER Electric Chain Hoist  
 (EDOC0030)



Cap. (Tons)	Single Speed			Dual Speed		
	Code	C (in)	L (ft)	Code	C (in)	L (ft)
1/8	(N)ERM001H-L/S/SD	14.6	7.5	(N)ERM001HD-L/S/SD	14.6	7.5
1/4	(N)ERM003S-L/S/SD	14.6	7.5	(N)ERM003SD-L/S/SD	14.6	7.5
1/4	(N)ERM003H-L/S/SD	15.4	7.5	(N)ERM003HD-L/S/SD	15.4	7.5
1/2	(N)ERM005L-L/S/SD	14.6	7.5	(N)ERM005LD-L/S/SD	14.6	7.5
1/2	(N)ERM005S-L/S/SD	15.4	7.5	(N)ERM005SD-L/S/SD	15.4	7.5
1	(N)ERM010L-L/S/SD	16.5	7.5	(N)ERM010LD-L/S/SD	16.5	7.5
1	NERM010M-L/S/SD	16.5	7.5			
1	(N)ERM010S-L/S/SD	17.7	7.5	(N)ERM010SD-L/S/SD	17.7	7.5
1 1/2	(N)ERM015S-L/S/SD	19.5	7.5	(N)ERM015SD-L/S/SD	19.5	7.5
2	(N)ERM020L-L/S/SD	21.7	7.5	(N)ERM020LD-L/S/SD	22.2	7.5
2	NERM020M-L/S/SD	21.7	7.5			
2	(N)ERM020S-L/S/SD	23.6	8.2	(N)ERM020SD-L/S/SD	26.6	8.2
2 1/2	(N)ERM025S-L/S/SD	24.2	8.2	(N)ERM025SD-L/S/SD	26.6	8.2
3	NERM030C-L/S/SD	28.9	8.2			
3	(N)ERM030L-L/S/SD	25.4	8.2	(N)ERM030LD-L/S/SD	28.0	8.2
3	(N)ERM030S-L/S/SD	25.4	8.2	(N)ERM030SD-L/S/SD	28.0	8.2
5	(N)ERM050L-L/S/SD	32.7	8.2	(N)ERM050LD-L/S/SD	35.0	8.2
8	ERM080S-L	47.6	9.2	ERM080SD-L	47.6	9.2
10	ERM100L-L	45.7	9.2	ERM100LD-L	45.7	9.2
10	ERM100S-L	46.3	9.2	ERM100SD-L	46.3	9.2
15	ERM150S-L	51.4	9.2	ERM150SD-L	51.4	9.2
20	ERM200S-L	52.8	9.2	ERM200SD-L	52.8	9.2

## Specifications

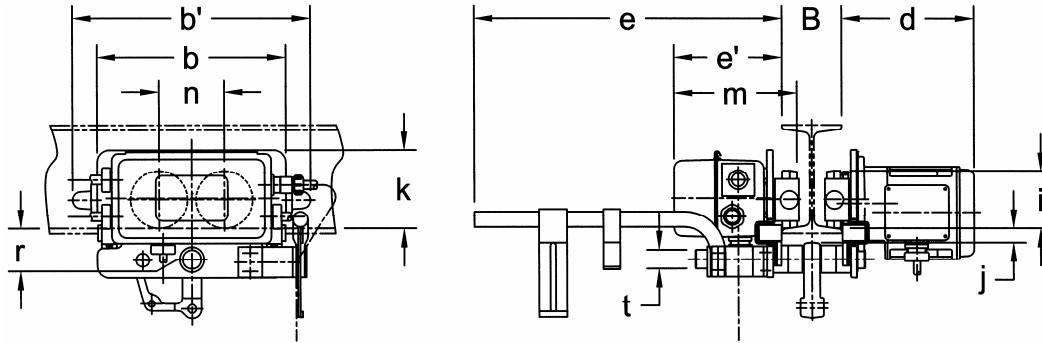
Product Code for MR Trolley Alone:



### Metric: Trolley Specifications:

	Capacity (Ton)	Code	Standard Beam Flange Range (mm)	Optional Beam Flange Range (mm)	Min. Allowable Radius for Curve (mm)	Motor			Approx. Net Weight (kg)
						Output (kW)	Current Draw (amps)		
							208V or 230V	460V	
SINGLE SPEED	1	MR010L/S	58 to 127	128 to 153 <u>OR</u> 154 to 305	800	0.4	3.2	1.6	30
	2	MR020L/S	82 to 153	154 to 178 <u>OR</u> 179 to 305	800	0.4	3.2	1.6	38
	3	MR030L/S	82 to 153	154 to 178 <u>OR</u> 179 to 305	1000	0.4	3.2	1.6	47
	5	MR050L/S	100 to 178	179 to 193 <u>OR</u> 194 to 305	1800	1.0	5.1	2.5	71
	8	MR080L	140 to 220	221 to 305	2500	0.75	5.1	2.5	143
	10	MR100L	140 to 220	221 to 305	2500	0.75	5.1	2.5	143
	15	MR150L	140 to 220	221 to 305	∞	0.75 x 2	5.1 x 2	2.5 x 2	277
	20	MR200L	140 to 220	221 to 305	∞	0.75 x 2	5.1 x 2	2.5 x 2	287
DUAL SPEED	1	MR010SD	58 to 127	128 to 153 <u>OR</u> 154 to 305	800	0.32/0.08	2.9/2.2	1.5/1.1	34
	2	MR020SD	82 to 153	154 to 178 <u>OR</u> 179 to 305	800	0.32/0.08	2.9/2.2	1.5/1.1	42
	3	MR030SD	82 to 153	154 to 178 <u>OR</u> 179 to 305	1000	0.64/0.16	3.6/3.1	1.8/1.6	50
	5	MR050SD	100 to 178	179 to 193 <u>OR</u> 194 to 305	1800	0.64/0.16	3.6/3.1	1.8/1.6	75

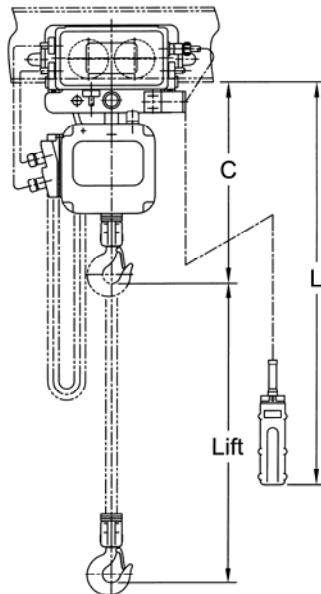
### Metric: Trolley Dimensions:



	Code	b	b'	d	e	e'	i	j	k	m	n	r	t
Single Speed	MR010L/S	315	397	220	515	179	95	24	130	204	109	51	31
	MR020L/S	325	417	225	520	184	110	29	125	212	118	60	36
	MR030L/S	340	442	226	521	185	125	29	131	215	132	68	43
	MR050L/S	400	502	281	528	192	140	44	145	233	150	86	54
	MR080L	500	582	284	531	223	175	78	175	267	191	153	70
	MR100L	500	582	284	531	223	175	78	175	267	191	153	70
	MR150L	1020	1102	284	531	223	175	83	175	267	711	153	70
	MR200L	1020	1102	284	531	223	175	78	175	267	711	153	70
Dual Speed	MR010SD	315	397	268	515	179	95	24	130	204	109	51	31
	MR020SD	325	417	273	520	184	110	29	125	212	118	60	36
	MR030SD	340	442	274	521	185	125	29	131	215	132	68	43
	MR050SD	400	502	281	528	192	140	44	145	233	150	86	54

### Metric: ERM/NERM Electric Hoist with Motorized Trolley Dimensions:

For complete hoist information see:  
 TECHNICAL INFORMATION  
 ER/NER Electric Chain Hoist  
 (EDOC0030)



Cap. (Tons)	Single Speed			Dual Speed		
	Code	C (mm)	L (m)	Code	C (mm)	L (m)
1/8	(N)ERM001H-L/S/SD	370	2.3	(N)ERM001HD-L/S/SD	370	2.3
1/4	(N)ERM003S-L/S/SD	370	2.3	(N)ERM003SD-L/S/SD	370	2.3
1/4	(N)ERM003H-L/S/SD	390	2.3	(N)ERM003HD-L/S/SD	390	2.3
1/2	(N)ERM005L-L/S/SD	370	2.3	(N)ERM005LD-L/S/SD	370	2.3
1/2	(N)ERM005S-L/S/SD	390	2.3	(N)ERM005SD-L/S/SD	390	2.3
1	(N)ERM010L-L/S/SD	420	2.3	(N)ERM010LD-L/S/SD	420	2.3
1	NERM010M-L/S/SD	420	2.3			
1	(N)ERM010S-L/S/SD	450	2.3	(N)ERM010SD-L/S/SD	450	2.3
1 1/2	(N)ERM015S-L/S/SD	495	2.3	(N)ERM015SD-L/S/SD	495	2.3
2	(N)ERM020L-L/S/SD	550	2.3	(N)ERM020LD-L/S/SD	565	2.3
2	NERM020M-L/S/SD	550	2.3			
2	(N)ERM020S-L/S/SD	600	2.5	(N)ERM020SD-L/S/SD	675	2.5
2 1/2	(N)ERM025S-L/S/SD	615	2.5	(N)ERM025SD-L/S/SD	675	2.5
3	NERM030C-L/S/SD	735	2.5			
3	(N)ERM030L-L/S/SD	645	2.5	(N)ERM030LD-L/S/SD	710	2.5
3	(N)ERM030S-L/S/SD	645	2.5	(N)ERM030SD-L/S/SD	710	2.5
5	(N)ERM050L-L/S/SD	830	2.5	(N)ERM050LD-L/S/SD	890	2.5
10	ERM100L-L	1160	2.8	ERM100LD-L	1160	2.8
10	ERM100S-L	1175	2.8	ERM100SD-L	1175	2.8
15	ERM150S-L	1305	2.8	ERM150SD-L	1305	2.8
20	ERM200S-L	1340	2.8	ERM200SD-L	1340	2.8

Harrington Hoists, Inc.  
 401 West End Avenue  
 Manheim, PA 17545  
 Phone: 717-665-2000  
 Toll Free: 800-233-3010  
 Fax: 717-665-2861



Western Factory Warehouse  
 2341 Pomona Rincon Rd. #103  
 Corona, CA 91720  
 Phone: 909-279-7100  
 Toll Free: 800-317-7111  
 Fax: 909-279-7500