

HARRINGTON

operating instructions

Effective April 1, 1990

$\frac{1}{4}$, $\frac{1}{2}$, and 1 ton peerless pal lever pullers

BEFORE USE

Attach handle. On one ton, note that the knob on the hub should be on the right side.

OPERATION

For $\frac{1}{4}$ and $\frac{1}{2}$ ton

To free-wheel "up" or "down", move the direction selector on the handle to neutral (dead center). Raise RELEASE latch. Move chain to position desired.

For 1 Ton

For "pull" or "down" movement of hook, pull out the knob on the handle and turn arrow to correct position.

For quick movement of hook, turn knob to "Off" position, then hold down on RELEASE latch and pull chain in either direction to desired position.

To double lifting capacity, attach a Peerless Pal Snatch Block to the lever Puller (no tools required). Simply slide load chain through block and secure load hook (at end of chain) to same support as top hook on the side opposite the release latch. Be sure the chain is not twisted, particularly when double-reeved. This arrangement reduces lifting distance by about one-half.

CAUTION

Do not overload. (Your Peerless Pal Lever Puller has been proof-tested before shipment at a load greater than rated capacity.)

Do not press RELEASE latch when any load is suspended.

MAINTENANCE

The only lubrication is an occasional oiling. Lay puller on its side with the RELEASE latch up and pour a liberal quantity of lubricating oil down the top of the latch.

HARRINGTON HOISTS

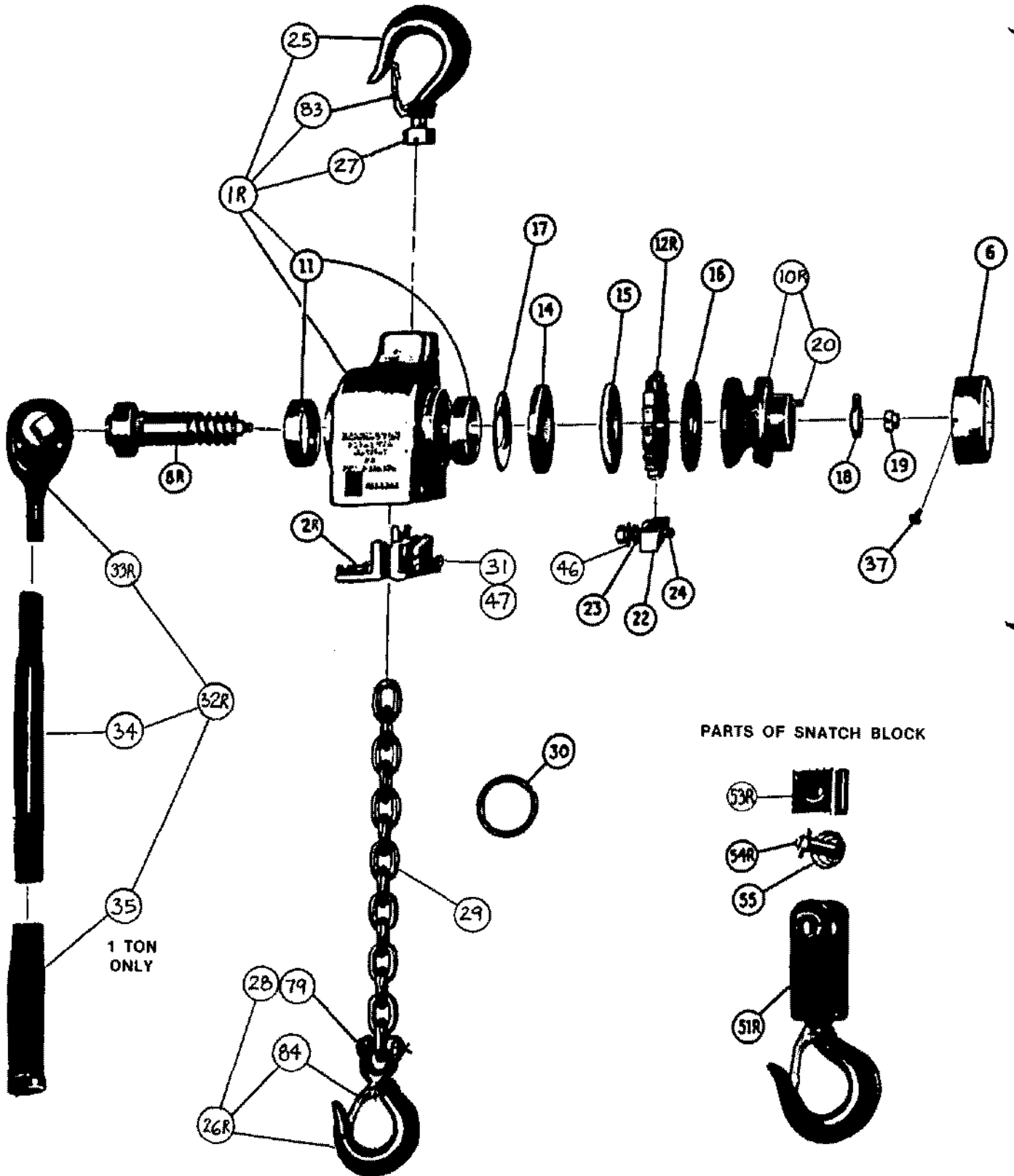
HARRINGTON

HARRINGTON CRANES

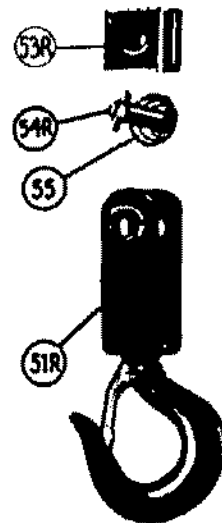
401 WEST END AVENUE, MANHEIM, PA 17545
1-800-233-3010 (OUTSIDE PA)

PHONE (AREA 717) 665-2000
FAX 717-665-2861

PEERLESS "PAL" LEVER PULLER REPLACEMENT PARTS



PARTS OF SNATCH BLOCK



PEERLESS PAL PARTS LIST

Part Number	Description	Capacity	¼ TON	½ TON	1 TON	Parts Per Unit
		Part No. Prefix	PL03-	PL05-	PL10-	
1R	Housing Assembly with Top Hook					1
11	Main Bearing					2
25	Top Hook with Safety Latch					1
27	Top Hook Nut					1
2R	Base Plate Assembly					1
3	Ratchet Head Screw		—	—		1
4	Ratchet Head Washer		—	—		1
6	Bearing Cap					1
8R	Drive Shaft Assembly					1
10R	Load Wheel Assembly					1
12R	Ratchet Disc with Bushing					1
14	Friction Disc					1
15	Friction Washer - Soft					1
16	Friction Washer - Hard					1
17	Disc Spring					1
18	Check Washer					1
19	Nut for #8R					1
20	Check Washer Pin					1
22	Ratchet Pawl					1
23	Ratchet Pawl Spring					1
24	Ratchet Pawl Stud					1
26R	Bottom Hook Assembly Complete					1
28	Chain Pin					1
79	Split Pin for #28		—			1
29	Load Chain					1
30	Load Chain Stop Ring					1
31	Housing Screw					3
32R	Handle Complete Assembly					1
33R	Ratchet Head Assembly		—	—		1
34	Handle Tube Only		—	—		1
35	Handle Grip Only		—	—		1
40	Reversing Pawl		—	—		1
41	Reversing Pawl Spring		—	—		1
42	Reversing Pawl Pin		—	—		1

continued

PEERLESS PAL PARTS LIST continued

43	Reversing Pawl Knob Pin	—	—		1
44	Reversing Pawl Knob	—	—		1
37	Bearing Cap Screw				2
46	Ratchet Pawl Stud Washer				1
47	Housing Washer				3
50	Metal Carrying Case			—	1
83	Safety Latch for Top Hook				1
84	Safety Latch for Bottom Hook				1
PARTS FOR SNATCH BLOCK					
51R	Frame Assembly with Hook				
53R	Idler Wheel with Bushing				
54R	Idler Pin with Lock				
55	Idler Pin Spring				

NOTE: When ordering, use part number prefix as shown in capacity columns in addition to part number.