

Options and Technical Data

DECK/BASE MOUNTED ATTACHMENT POINTS—DIMENSIONS

Capacity (t)	Product Code	e1 (in)	e12 (in)	Deck/Base Mounted	
2	RHN02D-20A-20D-①	40.9	24.2		
	RHN02D-33A-20D-①	52.5	35.8		
3	RHN03D-20A-20D-①	40.9	24.2		
	RHN03D-33A-20D-①	52.5	35.8		
5	RHN05D-20B-20D-①	41.3	24.2		
	RHN05D-33B-20D-①	52.9	35.8		
7 1/2	RHN08D-20C-20D-①	48.0	26.8		
	RHN08D-33C-20D-①	60.4	39.2		
10	RHN10D-20C-20D-①	48.0	26.8		
	RHN10D-33C-20D-①	60.4	39.2		

- ① 1 = 208V - 3ph - 60Hz
- 2 = 230V - 3ph - 60Hz
- 4 = 460V - 3ph - 60Hz
- 5 = 575V - 3ph - 60Hz

*5 - Lock washer

Options and Technical Data

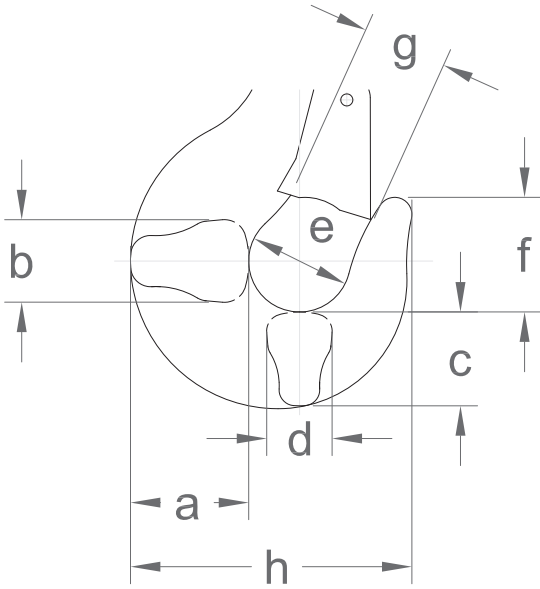
DECK/BASE MOUNTED ATTACHMENT POINTS—DIMENSIONS

Capacity (t)	Product Code	e1 (in)	e2 (in)	e12 (in)	Deck/Base Mounted
15	RHN15D-20D-16D-①	54.4	43.7	33.7	
	RHN15D-33D-16D-①	66.6		45.9	
20	RHN20D-20D-16D-①	54.4	43.7	33.7	
	RHN20D-33D-16D-①	66.6		45.9	

- ① 1 = 208V - 3ph - 60Hz
- 2 = 230V - 3ph - 60Hz
- 4 = 460V - 3ph - 60Hz
- 5 = 575V - 3ph - 60Hz

*5 - Lock washer

Options and Technical Data



BOTTOM HOOK—DIMENSIONS

Capacity (t)	Product Code*	a (in)	b (in)	c (in)	d (in)	e (in)	f (in)	g (in)	h (in)
2	RHN02D-20A-20D-①	2.2	1.8	1.9	1.5	2.2	2.5	1.6	5.8
	RHN02D-33A-20D-①								
3	RHN03D-20A-20D-①	2.2	1.8	1.9	1.5	2.2	2.5	1.6	5.8
	RHN03D-33A-20D-①								
5	RHN05D-20B-20D-①	2.6	2.1	2.3	1.8	2.5	2.8	1.7	6.6
	RHN05D-33B-20D-①								
7 1/2	RHN08D-20C-20D-①	3.1	2.5	2.6	2.1	2.8	3.1	1.9	7.7
	RHN08D-33C-20D-①								
10	RHN10D-20C-20D-①	3.1	2.5	2.6	2.1	2.8	3.1	1.9	7.7
	RHN10D-33C-20D-①								
15	RHN15D-20D-16D-①	3.9	3.1	3.3	2.6	3.5	4.0	2.4	10.1
	RHN15D-33D-16D-①								
	RHN15U-20D-12D-①	4.9	3.9	4.2	3.3	4.4	5.0	3.2	12.0
	RHN15U-33D-12D-①								
20	RHN20D-20D-16D-①	4.9	3.9	4.2	3.3	4.4	5.0	3.2	12.0
	RHN20D-33D-16D-①								

①
 1 = 208V - 3ph - 60Hz
 2 = 230V - 3ph - 60Hz
 4 = 460V - 3ph - 60Hz
 5 = 575V - 3ph - 60Hz

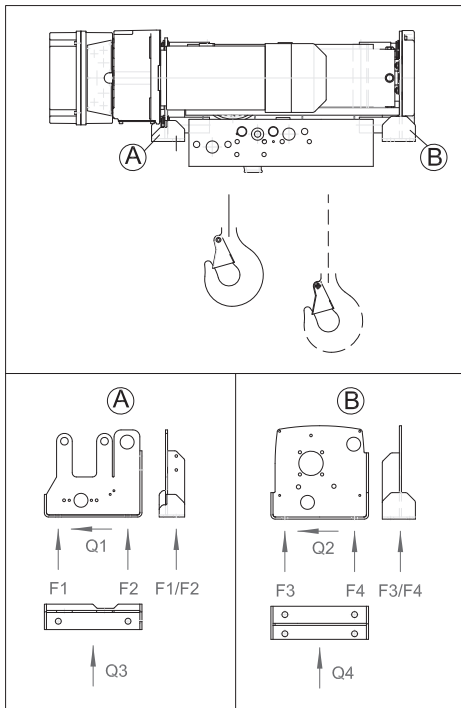
*Product codes represent Deck/Base Mounted hoists (except RHN15U), but hook dimensions also apply to trolley hoists.

Options and Technical Data

REACTION FORCES AT RATED LOAD—DECK/BASE MOUNTED

Capacity (t)	Product Code	F1 (lbs)	F2 (lbs)	F3 (lbs)	F4 (lbs)	Q1 (lbs)	Q2 (lbs)	Q3 (lbs)	Q4 (lbs)	Moment Mt (ft-lbs)
2	RHN02D-20A-20D-①	1817	1902	654	1292	295	169	393	393	232*
	RHN02D-33A-20D-①	1950	2149	582	1122	328	147	393	393	
3	RHN03D-20A-20D-①	2700	3043	1038	2067	472	270	629	629	372*
	RHN03D-33A-20D-①	2906	3439	916	1795	524	235	629	629	
5	RHN05D-20B-20D-①	4171	4683	1618	3151	736	415	984	984	770*
	RHN05D-33B-20D-①	4480	5272	1435	2744	814	362	984	984	
7 1/2	RHN08D-20C-20D-①	6989	5019	3625	5051	978	741	1475	1475	1514*
	RHN08D-33C-20D-①	7758	6054	3112	4278	1129	627	1475	1475	
10	RHN10D-20C-20D-①	9041	6692	4763	6735	1304	988	1967	1967	2019*
	RHN10D-33C-20D-①	10042	8072	4076	5703	1506	836	1967	1967	
15	RHN15D-20D-16D-①	9297	14086	5835	13988	1894	1684	3147	3147	**
	RHN15D-33D-16D-①	10384	16989	4931	12154	2227	1445	3147	3147	
20	RHN20D-20D-16D-①	12088	16707	7449	17186	2367	2105	3934	3934	**
	RHN20D-33D-16D-①	13494	20243	6316	14899	2784	1807	3934	3934	

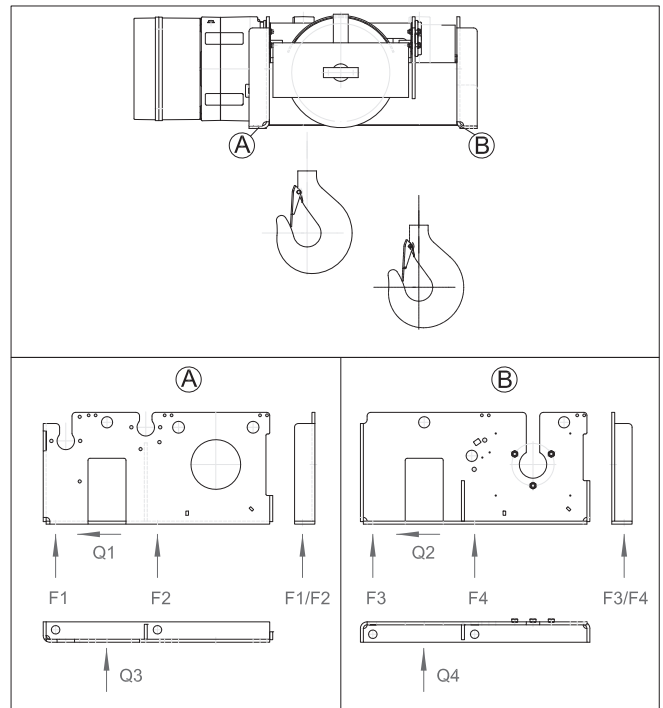
①
 1 = 208V - 3ph - 60Hz
 2 = 230V - 3ph - 60Hz
 4 = 460V - 3ph - 60Hz
 5 = 575V - 3ph - 60Hz



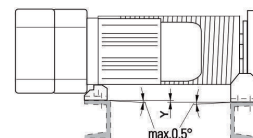
Deck/Base Mounted Hoist (2-10 Ton)

*For 2-10t capacities, the customer's substructure must take up the moment MT from the rope drum. Therefore it must be torsion resistant and level, (max permissible offset, Y = .0787)

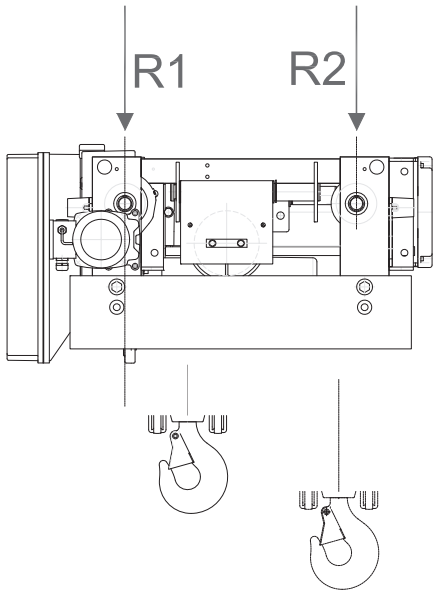
**For 15-20t capacities, the design structure compensates for the moment, and the forces are diverted to the fixation points.



Deck/Base Mounted Hoist (15-20 Ton)



Options and Technical Data



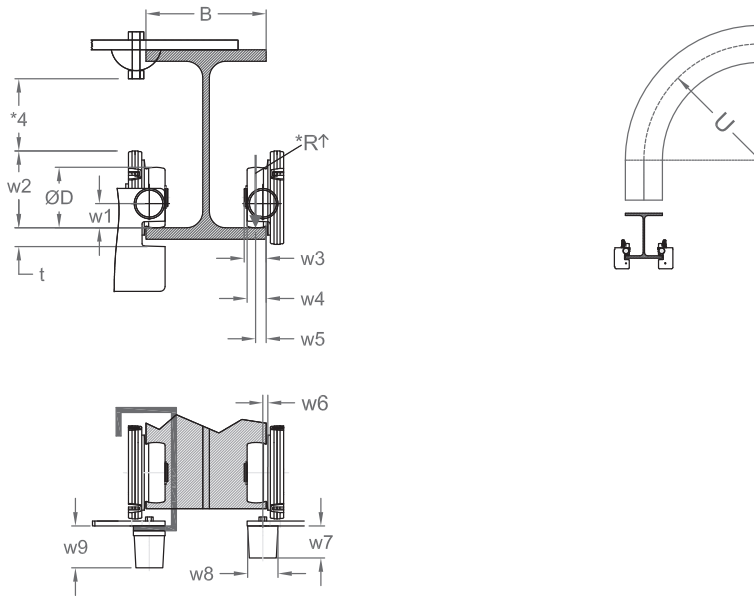
Ultra-Low Headroom
Trolley Hoist

REACTION FORCES AT RATED LOAD—ULTRA-LOW HEADROOM TROLLEY HOISTS

Capacity (t)	Ultra-Low Headroom Trolley Wheel Pair Reaction Forces		
	Product Code	R1 (lbs)	R2 (lbs)
2	RHN02U-20A-20DD-①	2985	2939
	RHN02U-33A-20DD-①	3632	2411
3	RHN03U-20A-20DD-①	4292	4285
	RHN03U-33A-20DD-①	5253	3487
5	RHN05U-20B-20DD-①	6629	7288
	RHN05U-33B-20DD-①	7167	6675
7 1/2	RHN08U-20C-20DD-①	9102	12320
	RHN08U-33C-20DD-①	12011	9860
10	RHN10U-20C-20DD-①	11783	16192
	RHN10U-33C-20DD-①	15641	12898
15	RHN15U-28D-12DD-①	22045	17881
	RHN15U-46D-12DD-①	22226	18478
20	N/A		
	N/A		

①
 1 = 208V - 3ph - 60Hz
 2 = 230V - 3ph - 60Hz
 4 = 460V - 3ph - 60Hz
 5 = 575V - 3ph - 60Hz

Options and Technical Data



TROLLEY WHEEL—DIMENSIONS

Capacity (t)	Product Code	Wheel Dia. Ø D (in)	w1 (in)	w2 (in)	w3 (in)	w4 (in)	w5 (in)	w6 (in)	w7 (in)	w8 (in)	w9 (in)	U*2 (ft)	Maximum Flange Thickness t (in)
2	RHN02U-20A-20DD-①	3.1	1.6	4.1	1.2	1.1	0.5 (0.6)**	0.2	2.1	2.0	2.5	37.4	0.96
	RHN02U-33A-20DD-①											56.8	
3	RHN03U-20A-20DD-①	3.1	1.6	4.1	1.2	1.1	0.5 (0.6)**	0.2	2.1	2.0	2.5	37.4	0.96
	RHN03U-33A-20DD-①											56.8	
5	RHN05U-20B-20DD-①	3.9	1.6	5.1	1.5	1.2	0.7 (0.9)**	0.2	2.1	2.0	2.5	37.4	1.04
	RHN05U-33B-20DD-①											56.8	
7 1/2	RHN08U-20C-20DD-①	5.5	1.5	6.9	N/A	1.8	0.9 (1.3)**	0.5	2.1	2.5	2.5	41.0	1.46
	RHN08U-33C-20DD-①											61.7	
10	RHN10U-20C-20DD-①	5.5	1.5	6.9	N/A	1.8	0.9 (1.3)**	0.5	2.1	2.5	2.5	41.0	1.46
	RHN10U-33C-20DD-①											61.7	
15	RHN15U-28D-12DD-①	7.9	1.7	10.5	N/A	1.8	0.9 (1.3)**	0.5	2.1	2.5	2.5	N/A	1.81
	RHN15U-46D-12DD-①											N/A	

①
 1 = 208V - 3ph - 60Hz
 2 = 230V - 3ph - 60Hz
 4 = 460V - 3ph - 60Hz
 5 = 575V - 3ph - 60Hz

** - () with sloping flange.
 *R - See page 19 for reaction forces R1 and R2.
 *2 - only up to B ≤ 7.9 inches.
 *4 - Observe clearance dimensions.

Options and Technical Data

VARIABLE FREQUENCY DRIVE (VFD)

Consult Customer Service

DUTY CLASSIFICATIONS

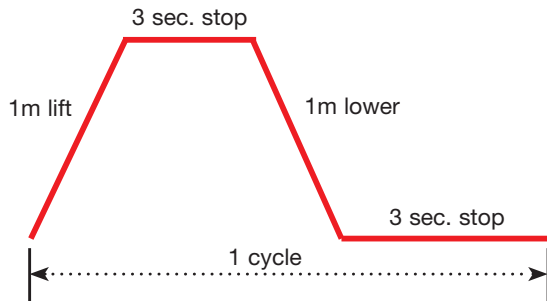
Hoist Duty Class	Typical Areas of Application	Operation Time Ratings at K = 0.65*			
		Uniformly Distributed Work Periods		Infrequent Work Periods	
		Max. Time (min/hr)	Max. No. of Starts/hr	Max. Time From Cold Start (min)	Max. No. of starts
H2	Light machine shop fabricating, service and maintenance; loads and utilization randomly distributed; rated loads infrequently handled	7.5 (12.5%)	75	15	100
H3	General machine shop fabricating, assembly, storage, and warehousing; loads and utilization randomly distributed	7.5 (25%)	150	30	200
H4	High volume handling in steel warehouses, machine shops, fabricating plants and mills, and foundries; manual or automatic cycling operations in heat treating and plating; loads at or near rated load frequently handled	30 (50%)	300	30	300

*K = Mean effective load factor.

LIFTING MOTOR RATINGS

Short Time Rating

This rating indicates how long the hoist can be operated continuously at the rated capacity on the cycle below, assuming continued operation for a short time span.

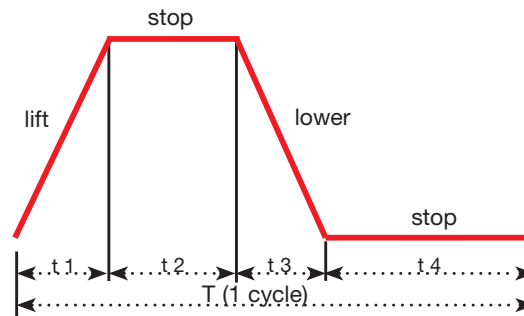


• Dual speed: 30/10 min

Intermittent Rating (Percent ED)

Max. Number of Starts Per Hour

This rating indicates the allowable ratio of motor ON time to motor OFF time, and starts per hour for a hoist operated continuously at 63% of rated capacity on the cycle below, assuming continued operation or repeated starting over a long time span.



$$\text{Example (single speed): \%ED} = \frac{\text{Motor ON time (t1 + t3)}}{T \text{ (1 cycle)}} \times 100$$

(Where T = 1 cycle (t1 + t2 + t3 + t4) and is not more than 10 minutes.)

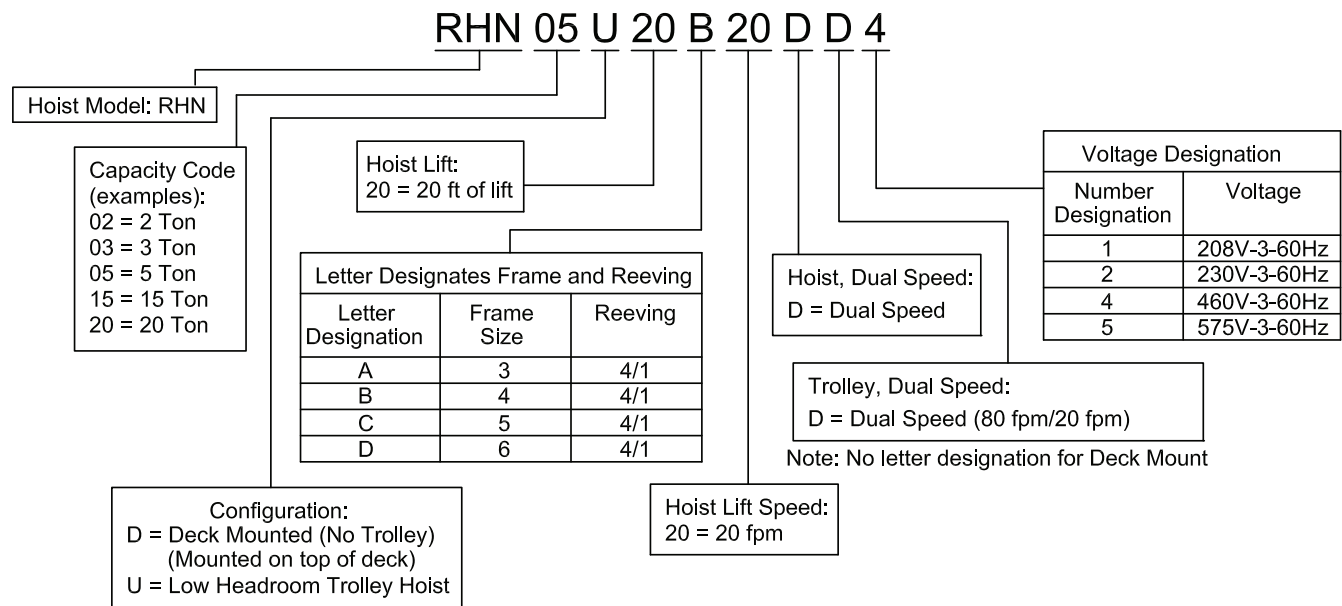
Options and Technical Data

COMPLIANCE

Harrington's electric wire rope hoists are produced to comply with:

- ASME B30.16 ("Safety Standard – Overhead Hoists (Underhung)")
- CMAA
- UL508A
- CSA 22.2 NO.14

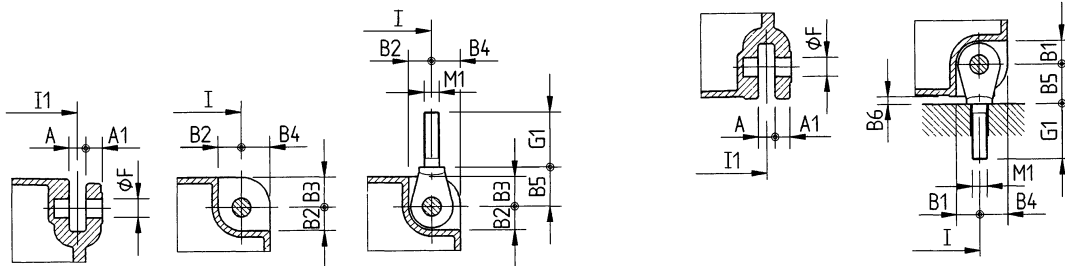
Product Code For RHN Series Hoists and Trolley Hoists



▪ Refer to page 10 for flange range B and headroom E dimension.

Eye Bolt and Attachment Point Dimensions
For Deck/Base Mounted or Lug Suspended Hoists

Capacity (Tons)	Product Code	A (in)	A1 (in)	B1 (in)	B2 (in)	B3 (in)	B4 (in)	B5 (in)	ØF (mm)	G1 (in)	M1 (mm x pitch)
2	RH02D-20①4C-②	0.79	0.79	0.83	0.83	1.38	1.38	1.85	20	2.64	M16x2.0
	RH02D-29①4C-②										
	RH02D-20①4D-②										
	RH02D-29①4D-②										
	RH02D-39①3A-②										
RH02D-79①3A-②											
3	RH03D-20①4C-②	0.79	0.79	0.83	0.83	1.38	1.38	1.85	20	2.64	M16x2.0
	RH03D-29①4C-②										
	RH03D-23①4H-②										
	RH03D-33①4H-②										
	RH03D-46①3E-②										
RH03D-85①3E-②											
5	RH05D-23①4G-②	0.87	0.87	1.22	1.22	1.57	1.57	2.05	25	2.87	M20x2.5
	RH05D-33①4G-②	1.26	1.26	1.42	1.42	2.17	2.17	2.83	35	3.82	M24x3.0
	RH05D-23①4M-②										
	RH05D-33①4M-②	1.65	1.65	1.50	1.81	2.76	2.76	3.35	45	4.41	M30x3.5
	RH05D-46①4J-②										
	RH05D-92①4J-②										
RH05D-52①4P-②											
RH05D-X5①4P-②											
7 1/2	RH08D-23①4L-②	1.26	1.26	1.42	1.42	2.17	2.17	2.83	35	3.82	M24x3.0
	RH08D-33①4L-②										
	RH08D-23①3M-②	1.65	1.65	1.50	1.81	2.76	2.76	3.35	45	4.41	M30x3.5
	RH08D-33①3M-②										
	RH08D-52①4N-②										
RH08D-X5①4N-②											
10	RH10D-23①4L-②	1.26	1.26	1.42	1.42	2.17	2.17	2.83	35	3.82	M24x3.0
	RH10D-33①4L-②	1.65	1.65	1.50	1.81	2.76	2.76	3.35	45	4.41	M30x3.5
	RH10D-26①4R-②										
	RH10D-36①4R-②	1.65	1.65	1.50	1.81	2.76	2.76	3.35	45	4.41	M30x3.5
	RH10D-52①3N-②										
RH10D-X5①3N-②											
15	RH15D-26①4Q-②	1.65	1.65	1.50	1.81	2.76	2.76	3.35	45	4.41	M30x3.5
	RH15D-36①4Q-②										
20	RH20D-26①3Q-②	1.65	1.65	1.50	1.81	2.76	2.76	3.35	45	4.41	M30x3.5
	RH20D-36①3Q-②										

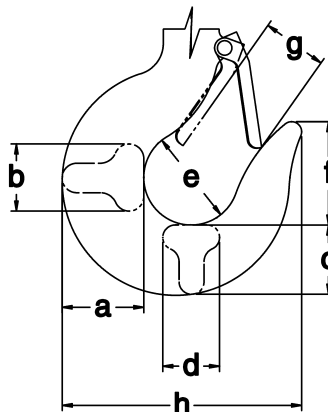


Note:

- Eye bolts are suitable for deck/base mounted or lug suspended applications.
- Eye bolt kits include four eyebolts and all necessary hardware.
- See page 5 for dimensions I and I1.

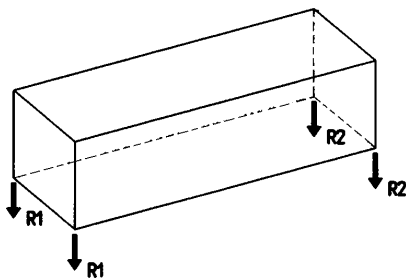
Bottom Hook Dimensions

Capacity (Tons)	Product Code	a (in)	b (in)	c (in)	d (in)	e (in)	f (in)	g (in)	h (in)
2	RH02D-20①4C-②	2.2	1.8	1.9	1.5	2.2	2.5	1.5	5.7
	RH02D-29①4C-②								
	RH02D-20①4D-②								
	RH02D-29①4D-②								
	RH02D-39①3A-②	1.7	1.4	1.5	1.1	1.9	2.1	1.3	4.7
	RH02D-79①3A-②								
3	RH03D-20①4C-②	2.2	1.8	1.9	1.5	2.2	2.5	1.5	5.7
	RH03D-29①4C-②								
	RH03D-23①4H-②	2.6	2.1	2.3	1.8	2.5	2.8	1.7	6.7
	RH03D-33①4H-②								
	RH03D-46①3E-②	2.2	1.8	1.9	1.5	2.2	2.5	1.5	5.7
	RH03D-85①3E-②								
5	RH05D-23①4G-②	2.6	2.1	2.3	1.8	2.5	2.8	1.7	6.7
	RH05D-33①4G-②								
	RH05D-23①4M-②	3.5	2.8	3.0	2.4	3.1	3.5	2.0	8.9
	RH05D-33①4M-②								
	RH05D-46①4J-②	2.6	2.1	2.3	1.8	2.5	2.8	1.7	6.7
	RH05D-92①4J-②								
	RH05D-52①4P-②	3.5	2.8	3.0	2.4	3.1	3.5	2.0	8.9
	RH05D-X5①4P-②								
7 1/2	RH08D-23①4L-②	3.5	2.8	3.0	2.4	3.1	3.5	2.0	8.9
	RH08D-33①4L-②								
	RH08D-23①3M-②								
	RH08D-33①3M-②								
	RH08D-52①4N-②								
	RH08D-X5①4N-②								
10	RH10D-23①4L-②	3.5	2.8	3.0	2.4	3.1	3.5	2.0	8.9
	RH10D-33①4L-②								
	RH10D-26①4R-②	4.9	3.9	4.2	3.3	4.4	5.0	3.0	12.7
	RH10D-36①4R-②								
	RH10D-52①3N-②	3.5	2.8	3.0	2.4	3.1	3.5	2.0	8.9
	RH10D-X5①3N-②								
15	RH15D-26①4Q-②	4.9	3.9	4.2	3.3	4.4	5.0	3.0	12.7
	RH15D-36①4Q-②								
20	RH20D-26①3Q-②	4.9	3.9	4.2	3.3	4.4	5.0	3.0	12.7
	RH20D-36①3Q-②								

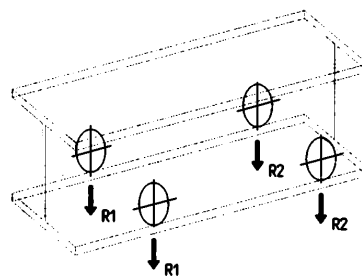


Reaction Forces at Rated Load

Capacity (Tons)	Deck/Base Mounted or Lug Suspended Attachment Point Reaction Forces			Standard Headroom Trolley Reaction Forces			Wheel	Ultra- Low Headroom Trolley Reaction Forces			Wheel
	Product Code	R1 (lbs)	R2 (lbs)	Product Code	R1 (lbs)	R2 (lbs)		Product Code	R1 (lbs)	R2 (lbs)	
2	RH02D-20①4C-②	1483	683	RH02S-20①4C-②-③	1600	665		RH02U-20①4C-②-③	1659	694	
	RH02D-29①4C-②	1734	454	RH02S-29①4C-②-③	1826	461		RH02U-29①4C-②-③	1887	487	
	RH02D-20①4D-②	1483	683	RH02S-20①4D-②-③	1600	665		RH02U-20①4D-②-③	1659	694	
	RH02D-29①4D-②	1734	454	RH02S-29①4D-②-③	1826	461		RH02U-29①4D-②-③	1887	487	
	RH02D-39①3A-②	1758	398	RH02S-39①3A-②-③	1854	401		RH02U-39①3A-②-③	1931	411	
	RH02D-79①3A-②	1928	248	RH02S-79①3A-②-③	2025	250		RH02U-79①3A-②-③	2104	259	
3	RH03D-20①4C-②	2183	983	RH03S-20①4C-②-③	2334	931		RH03U-20①4C-②-③	2400	953	
	RH03D-29①4C-②	2554	634	RH03S-29①4C-②-③	2667	620		RH03U-29①4C-②-③	2737	637	
	RH03D-23①4H-②	2213	1013	RH03S-23①4H-②-③	2297	1067		RH03U-23①4H-②-③	2405	1113	
	RH03D-33①4H-②	2589	669	RH03S-33①4H-②-③	2650	747		RH03U-33①4H-②-③	2760	791	
	RH03D-46①3E-②	5627	587	RH03S-46①3E-②-③	2652	656		RH03U-46①3E-②-③	2881	565	
	RH03D-85①3E-②	2878	358	RH03S-85①3E-②-③	2896	440		RH03U-85①3E-②-③	3105	369	
5	RH05D-23①4G-②	3613	1613	RH05S-23①4G-②-③	3707	1657		RH05U-23①4G-②-③	3836	1682	
	RH05D-33①4G-②	4229	1029	RH05S-33①4G-②-③	4284	1112		RH05U-33①4G-②-③	4417	1135	
	RH05D-23①4M-②	3798	1798	RH05S-23①4M-②-③	4004	1954		RH05U-23①4M-②-③	4233	2079	
	RH05D-33①4M-②	4444	1244	RH05S-33①4M-②-③	4607	1435		RH05U-33①4M-②-③	4844	1562	
	RH05D-46①4J-②	4470	1070	RH05S-46①4J-②-③	4671	1017		RH05U-46①4J-②-③	4929	1079	
	RH05D-92①4J-②	4911	711	RH05S-92①4J-②-③	5102	670		RH05U-92①4J-②-③	5345	745	
	RH05D-52①4P-②	4690	1290	RH05S-52①4P-②-③	4937	1407		RH05U-52①4P-②-③	5345	1589	
	RH05D-X5①4P-②	5157	957	RH05S-X5①4P-②-③	5418	1058		RH05U-X5①4P-②-③	5861	1261	
7.5	RH08D-23①4L-②	5548	2548	RH08S-23①4L-②-③	5767	2692		RH08U-23①4L-②-③	6022	2791	
	RH08D-33①4L-②	6494	1694	RH08S-33①4L-②-③	6650	1892		RH08U-33①4L-②-③	6915	1992	
	RH08D-23①3M-②	5548	2548	RH08S-23①3M-②-③	5767	2692		RH08U-23①3M-②-③	6022	2791	
	RH08D-33①3M-②	6494	1694	RH08S-33①3M-②-③	6650	1892		RH08U-33①3M-②-③	6915	1992	
	RH08D-52①4N-②	6790	1690	RH08S-52①4N-②-③	7070	1910		RH08U-52①4N-②-③	7534	1900	
	RH08D-X5①4N-②	7457	1157	RH08S-X5①4N-②-③	7758	1218		RH08U-X5①4N-②-③	8261	1361	
10	RH10D-23①4L-②	7298	3298	RH10S-23①4L-②-③	7529	3429		RH10U-23①4L-②-③	7810	3502	
	RH10D-33①4L-②	8544	2144	RH10S-33①4L-②-③	8693	2349		RH10U-33①4L-②-③	8985	2421	
	RH10D-26①4R-②	7551	3551	RH10S-26①4R-②-③	7666	4010		RH10U-26①4R-②-③	8132	4220	
	RH10D-36①4R-②	8828	2428	RH10S-36①4R-②-③	9147	2683		RH10U-36①4R-②-③	9666	2918	
	RH10D-52①3N-②	8890	2090	RH10S-52①3N-②-③	9202	2412		RH10U-52①3N-②-③	9723	2211	
	RH10D-X5①3N-②	9757	1357	RH10S-X5①3N-②-③	10098	1378		RH10U-X5①3N-②-③	10661	1461	
15	RH15D-26①4Q-②	11051	5051	RH15S-26①4Q-②-③	11080	5596		RH15U-26①4Q-②-③	11610	5742	
	RH15D-36①4Q-②	12928	3328	RH15S-36①4Q-②-③	13263	3567		RH15U-36①4Q-②-③	13853	3731	
20	RH20D-26①3Q-②	14551	6551	RH20S-26①3Q-②-③	14494	7182		RH20U-26①3Q-②-③	15088	7264	
	RH20D-36①3Q-②	17028	4228	RH20S-36①3Q-②-③	17379	4451		RH20U-36①3Q-②-③	18040	4544	



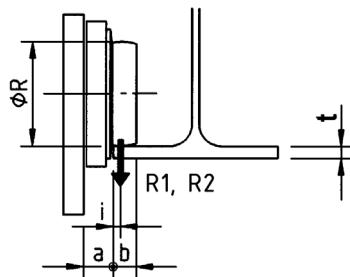
Deck/Base Mounted or Lug Suspended Hoists



Standard or Ultra-Low Headroom Trolley Hoist

Trolley Wheel Dimensions

Capacity (Tons)	Product Code		a (in)	b (in)	i (in)	Wheel Dia. Ø R (in)	Maximum Flange Thickness t (in)
	Standard Headroom	Ultra-Low Headroom					
2	RH02S-20①4C-②-③	RH02U-20①4C-②-③	1.38	0.71	0.31	3.94	0.79
	RH02S-29①4C-②-③	RH02U-29①4C-②-③					
	RH02S-20①4D-②-③	RH02U-20①4D-②-③					
	RH02S-29①4D-②-③	RH02U-29①4D-②-③					
	RH02S-39①3A-②-③	RH02U-39①3A-②-③					
RH02S-79①3A-②-③	RH02U-79①3A-②-③						
3	RH03S-20①4C-②-③	RH03U-20①4C-②-③	1.38	0.71	0.31	3.94	0.79
	RH03S-29①4C-②-③	RH03U-29①4C-②-③					
	RH03S-23①4H-②-③	RH03U-23①4H-②-③	1.38	1.14	0.47	4.92	0.91
	RH03S-33①4H-②-③	RH03U-33①4H-②-③					
	RH03S-46①3E-②-③	RH03U-46①3E-②-③	1.38	0.71	0.31	3.94	0.79
RH03S-85①3E-②-③	RH03U-85①3E-②-③						
5	RH05S-23①4G-②-③	RH05U-23①4G-②-③	1.38	1.14	0.47	4.92	0.91
	RH05S-33①4G-②-③	RH05U-33①4G-②-③					
	RH05S-23①4M-②-③	RH05U-23①4M-②-③	1.77	1.50	0.75	7.87	1.50
	RH05S-33①4M-②-③	RH05U-33①4M-②-③					
	RH05S-46①4J-②-③	RH05U-46①4J-②-③	1.38	1.14	0.47	4.92	0.91
	RH05S-92①4J-②-③	RH05U-92①4J-②-③					
	RH05S-52①4P-②-③	RH05U-52①4P-②-③	1.77	1.50	0.75	7.87	1.50
RH05S-X5①4P-②-③	RH05U-X5①4P-②-③						
7 1/2	RH08S-23①4L-②-③	RH08U-23①4L-②-③	1.77	1.50	0.75	7.87	1.50
	RH08S-33①4L-②-③	RH08U-33①4L-②-③					
	RH08S-23①3M-②-③	RH08U-23①3M-②-③					
	RH08S-33①3M-②-③	RH08U-33①3M-②-③					
	RH08S-52①4N-②-③	RH08U-52①4N-②-③					
RH08S-X5①4N-②-③	RH08U-X5①4N-②-③						
10	RH10S-23①4L-②-③	RH10U-23①4L-②-③	1.77	1.50	0.75	7.87	1.50
	RH10S-33①4L-②-③	RH10U-33①4L-②-③					
	RH10S-26①4R-②-③	RH10U-26①4R-②-③	1.97	1.69	0.87	9.84	1.69
	RH10S-36①4R-②-③	RH10U-36①4R-②-③					
	RH10S-52①3N-②-③	RH10U-52①3N-②-③	1.77	1.50	0.75	7.87	1.50
RH10S-X5①3N-②-③	RH10U-X5①3N-②-③						
15	RH15S-26①4Q-②-③	RH15U-26①4Q-②-③	1.97	1.69	0.87	9.84	1.69
	RH15S-36①4Q-②-③	RH15U-36①4Q-②-③					
20	RH20S-26①3Q-②-③	RH20U-26①3Q-②-③	1.97	1.69	0.87	9.84	1.69
	RH20S-36①3Q-②-③	RH20U-36①3Q-②-③					



Note:
 ▪ See page 14 for reaction forces R1 and R2.