

Options and Technical Data

RY – SINGLE GIRDER BEAM SIZES				
METRIC or US Tons – A36 or A572 Steel				
Cap – Lift	3 Ton 25 Ft Lift	3 Ton 33 Ft Lift	5 Ton 25 Ft Lift	5 Ton 33 Ft Lift
Hoist Span Ft	RYU030A25	RYU030A33	RYU050B25	RYU050B33
10	W10x45	W10x45	W16x57	W18x65
15	W12x50	W12x50	W18x65	W18x71
20	W14x53	W14x53	W18x71	W18x71
25	W16x57	W16x57	W21x83	W21x93
30	W16x57	W16x57	W21x83	W21x93
35	W18x65	W18x65	W21x93	W21x93
40	W18x65	W18x71	W21x93	W24x103
45	W18x86	W18x86	W24x103	W24x103
50	W21x93	W21x93	W24x103	W27x114
55	W27x102	W27x102	W30x124	W30x124
60	W27x114	W27x114	W30x148	W30x148

Notes:
 1) For cranes using Harrington RY Hoists and Harrington end trucks only.
 2) For indoor cranes only – no wind load considered.
 3) 1 METRIC Ton = 2205 lb (1000 kg)

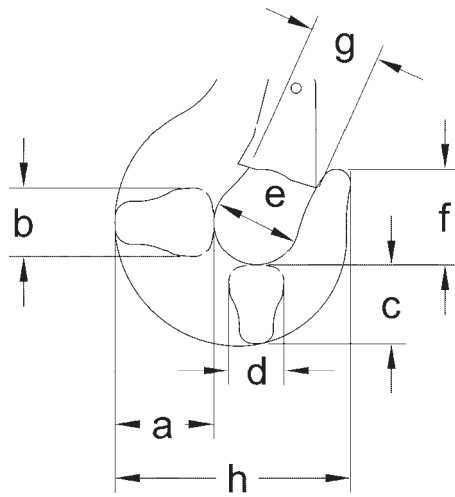
Options and Technical Data

BOTTOM HOOK—DIMENSIONS

Capacity (Tons)	Product Code	a (in)	b (in)	c (in)	d (in)	e (in)	f (in)	g (in)	h (in)
3	RYU030A25HDD ^①	2.6	2.1	2.3	1.8	2.5	2.8	1.7	6.7
	RYU030A33HDD ^①								
5	RYU050B25HDD ^①	3.2	2.5	2.6	2.1	2.8	3.2	1.8	7.6
	RYU050B33HDD ^①								



① 2 = 208V-230V - 3ph - 50/60Hz
 4 = 415V-460V - 3ph - 50/60Hz



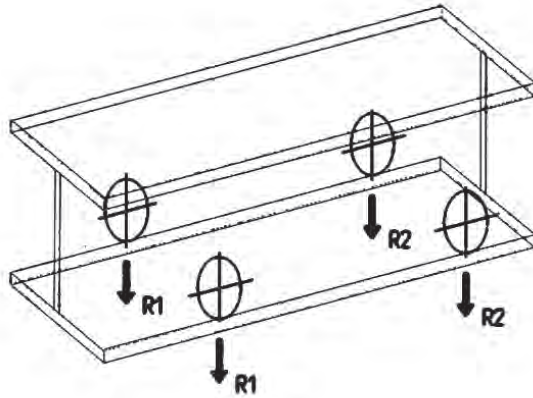
Options and Technical Data

REACTION FORCES AT RATED LOAD

Capacity (Tons)	Ultra-Low Headroom Trolley Hoists Wheel Reaction Forces			
	Product Code	Flange Range B (in)	R1 (lb)	R2 (lb)
3	RYU030A25HDD①	4.92-13.78	2994	789
		13.82-19.68	2999	790
	RYU030A33HDD①	4.92-13.78	3182	645
		13.82-19.68	3187	646
5	RYU050B25HDD①	4.92-13.78	4751	1252
		13.82-19.68	4755	1253
	RYU050B33HDD①	4.92-13.78	5032	1020
		13.82-19.68	5037	1021



① 2 = 208V-230V - 3ph - 50/60Hz
4 = 415V-460V - 3ph - 50/60Hz



Trolley Hoist Wheel Reaction Forces

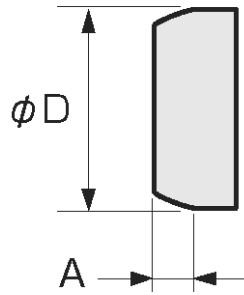
Options and Technical Data

TROLLEY WHEEL—DIMENSIONS

Capacity (Tons)	Product Code	A (in)	ϕD (in)
3	RYU030A25HDD ^①	0.79	3.86
	RYU030A33HDD ^①		
5	RYU050B25HDD ^①	0.79	3.86
	RYU050B33HDD ^①		



① 2 = 208V-230V - 3ph - 50/60Hz
 4 = 415V-460V - 3ph - 50/60Hz



Options and Technical Data

DUTY CLASSIFICATIONS

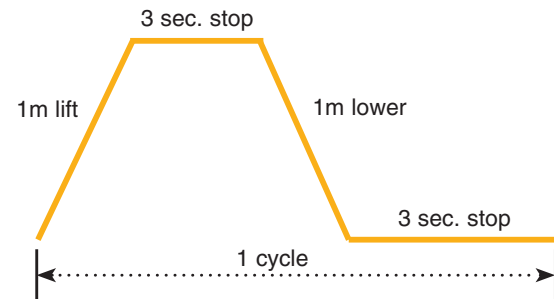
Hoist Duty Class	Typical Areas of Application	Operation Time Ratings at K = 0.65*			
		Uniformly Distributed Work Periods		Infrequent Work Periods	
		Max. Time (min/hr)	Max. No. of Starts/hr	Max. Time From Cold Start (min)	Max. No. of starts
H2	Light machine shop fabricating, service and maintenance; loads and utilization randomly distributed; rated loads infrequently handled	7.5 (12.5%)	75	15	100
H3	General machine shop fabricating, assembly, storage, and warehousing; loads and utilization randomly distributed	7.5 (25%)	150	30	200
H4	High volume handling in steel warehouses, machine shops, fabricating plants and mills, and foundries; manual or automatic cycling operations in heat treating and plating; loads at or near rated load frequently handled	30 (50%)	300	30	300

*K = Mean effective load factor.

LIFTING MOTOR RATINGS

Short Time Rating

This rating indicates how long the hoist can be operated continuously at the rated capacity on the cycle below, assuming continued operation for a short time span.

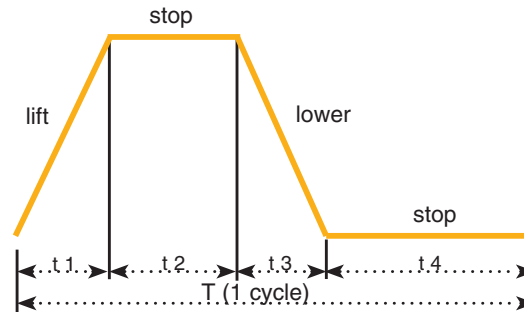


• Dual speed: 30/10 min

Intermittent Rating (Percent ED)

Max. Number of Starts Per Hour

This rating indicates the allowable ratio of motor ON time to motor OFF time, and starts per hour for a hoist operated continuously at 63% of rated capacity on the cycle below, assuming continued operation or repeated starting over a long time span.



$$\text{Example (single speed): \%ED} = \frac{\text{Motor ON time (t1 + t3)}}{T \text{ (1 cycle)}} \times 100$$

(Where T = 1 cycle (t1 + t2 + t3 + t4) and is not more than 10 minutes.)

Options and Technical Data

COMPLIANCE

Harrington's RY Hoists are produced to comply with the following standards:

- NFPA 70 "National Electric Code"
- ASME B30.16, "Safety Standard – Overhead Hoists (Underhung)"
- ASME HST-4, "Performance Standard for Overhead Electric Wire Rope Hoists"
- RY hoists in standard configurations (including certain options) are certified to UL 1340 "Standard for Hoist", CSA 22.2 No. 33

PRODUCT CODE

