

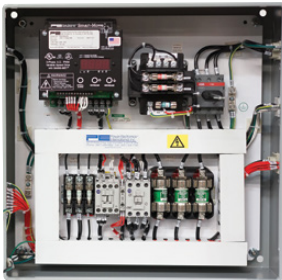
RY Series Plug and Play Crane Kit Packages

TROLLEY HOIST



- H4 rated hoist, 60 minute duty rating for the most demanding applications
- The Pull-Rotor Motor Brake on 3 and 5 Ton and Magnetic Disc Brake on 7.5 and 10 Ton provide reliable operation and exceptional durability with a **5-year hoist brake warranty**
- High and low speed adjustability via under-the-cover variable frequency control. Max. ratio of 6:1
- No load high speed hoist function for operation at 1.5 times the standard high speed when the load is less than 25% of rated capacity
- Standard upper emergency paddle limit is a secondary limit independent of drum rotation
- Premium wire rope (IWRC coated core) provides high resistance to fatigue and wear

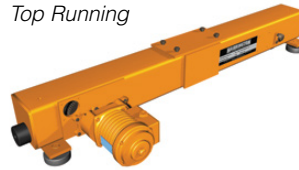
BRIDGE CONTROL PANEL



- Field adjustable UL listed Power Electronics® variable frequency drive on bridge motors
- Completely pre-wired and tested
- Through-the-door fused disconnect switch
- Control transformer with primary and secondary fusing
- Mainline contactor
- Thermal overload relay

END TRUCKS

Top Running



Underhung



- Totally enclosed non-ventilated (TENV) motors with adjustable DC brakes
- Helical gear reducers
- Externally adjustable DC brakes allow controlled deceleration
- Thermal motor protection
- Rubber bumpers
- Rail sweeps
- Machined steel wheels with side guide rollers that reduce wheel friction

FLAT CABLE FESTOONING



- Flat cable power festoon for smooth trolley travel
- Flat cable roving pendant provides safe and effective handling without close proximity to the load
- Completely pre-wired and tested
- Modular design for easy packaging and installation

RY SERIES PLUG AND PLAY CRANE KIT PACKAGES:

End Trucks

40 FPM or 80 FPM with VFD control

Hoist Capacity

3–10 Ton

(Hoist connection is hard wired flat cable)

Hoist and Trolley

Dual speed VFD controlled

High and low speed adjustability

Max. ratio of 6:1

Lift

25' or 33' (3–5 Ton)

30' or 40' (7.5–10 Ton)

Beam Accessory Kit

Includes all braces, mounting plates, guide wire brackets, end stops, control panel extension brackets when applicable, hardware and instructions

Bridge Control Panel

UL listed Power Electronics® VFD Control Panel with plug and play connections

Crane Wiring

Complete package

Flat Cable Festooning

Complete Package for power and roving pendant

Pendant

8-button with on/off

Voltage

460-3-60 (Consult Customer Service for alternate voltages)

Bridge Beam NOT Included

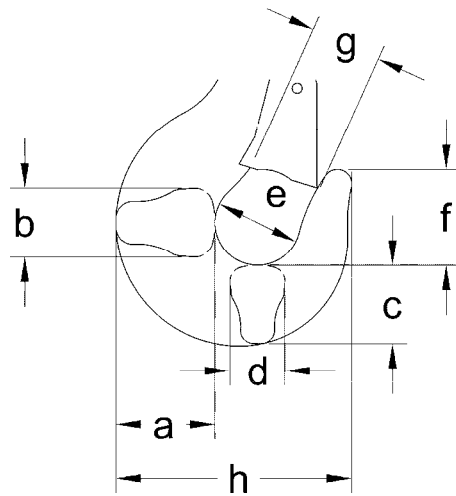
Consult Customer Service for alternate span requirements or recommended bridge beam sizes.

Options and Technical Data

BOTTOM HOOK—DIMENSIONS

Capacity (Tons)	Product Code	a (in)	b (in)	c (in)	d (in)	e (in)	f (in)	g (in)	h (in)
3	RYU030A25HDD ^①	2.6	2.1	2.3	1.8	2.5	2.8	1.7	6.7
	RYU030A33HDD ^①								
5	RYU050B25HDD ^①	3.2	2.5	2.6	2.1	2.8	3.2	1.8	7.6
	RYU050B33HDD ^①								
7.5	RYU075C30HDD ^①	4.4	3.5	3.7	3.0	3.9	4.5	2.8	10.9
	RYU075C40HDD ^①								
10	RYU100C30HDD ^①	4.4	3.5	3.7	3.0	3.9	4.5	2.8	10.9
	RYU100C40HDD ^①								

① 2 = 208V-230V - 3ph - 50/60Hz
4 = 460V - 3ph - 50/60Hz

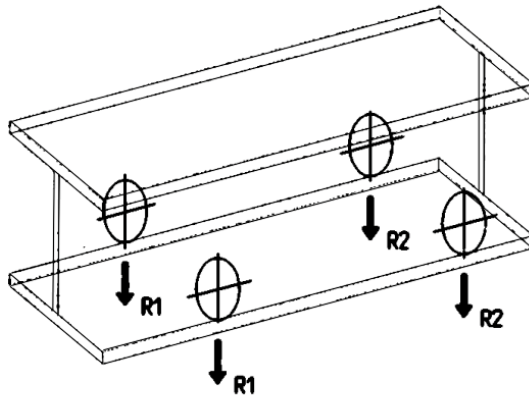


Options and Technical Data

REACTION FORCES AT RATED LOAD

Capacity (Tons)	Ultra-Low Headroom Trolley Hoists Wheel Reaction Forces			
	Product Code	Flange Range B (in)	R1 (lb)	R2 (lb)
3	RYU030A25HDD ^①	4.92-13.78	2994	789
		13.82-19.68	2999	790
	RYU030A33HDD ^①	4.92-13.78	3182	645
		13.82-19.68	3187	646
5	RYU050B25HDD ^①	4.92-13.78	4751	1252
		13.82-19.68	4755	1253
	RYU050B33HDD ^①	4.92-13.78	5032	1020
		13.82-19.68	5037	1021
7.5	RYU075C30HDD ^①	5.9-13.78	5797	3586
		13.79-20.00	5806	3592
	RYU075C40HDD ^①	5.9-13.78	6555	2913
		13.79-20.00	6566	2917
10	RYU100C30HDD ^①	5.9-13.78	7500	4639
		13.79-20.00	7509	4645
	RYU100C40HDD ^①	5.9-13.78	8463	3760
		13.79-20.00	8474	3765

① 2 = 208V-230V - 3ph - 50/60Hz
4 = 460V - 3ph - 50/60Hz



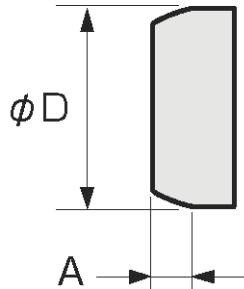
Trolley Hoist Wheel Reaction Forces

Options and Technical Data

TROLLEY WHEEL—DIMENSIONS

Capacity (Tons)	Product Code	A (in)	ϕD (in)
3	RYU030A25HDD ^①	0.79	3.86
	RYU030A33HDD ^①		
5	RYU050B25HDD ^①	0.79	3.86
	RYU050B33HDD ^①		
7.5	RYU075C30HDD ^①	1.42	5.91
	RYU075C40HDD ^①		
10	RYU100C30HDD ^①	1.42	5.91
	RYU100C40HDD ^①		

① 2 = 208V-230V - 3ph - 50/60Hz
4 = 460V - 3ph - 50/60Hz



Options and Technical Data

DUTY CLASSIFICATIONS

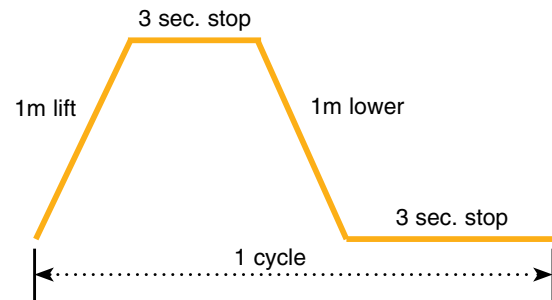
Hoist Duty Class	Typical Areas of Application	Operation Time Ratings at K = 0.65*			
		Uniformly Distributed Work Periods		Infrequent Work Periods	
		Max. Time (min/hr)	Max. No. of Starts/hr	Max. Time From Cold Start (min)	Max. No. of starts
H2	Light machine shop fabricating, service and maintenance; loads and utilization randomly distributed; rated loads infrequently handled	7.5 (12.5%)	75	15	100
H3	General machine shop fabricating, assembly, storage, and warehousing; loads and utilization randomly distributed	7.5 (25%)	150	30	200
H4	High volume handling in steel warehouses, machine shops, fabricating plants and mills, and foundries; manual or automatic cycling operations in heat treating and plating; loads at or near rated load frequently handled	30 (50%)	300	30	300

*K = Mean effective load factor.

LIFTING MOTOR RATINGS

Short Time Rating

This rating indicates how long the hoist can be operated continuously at the rated capacity on the cycle below, assuming continued operation for a short time span.

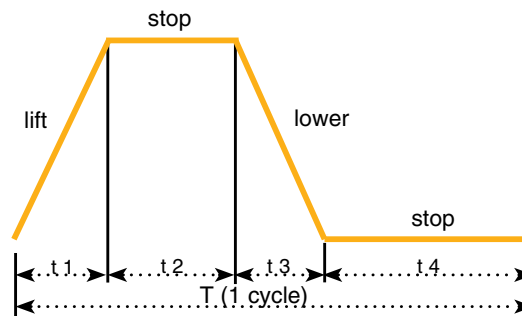


• Dual speed: 30/10 min

Intermittent Rating (Percent ED)

Max. Number of Starts Per Hour

This rating indicates the allowable ratio of motor ON time to motor OFF time, and starts per hour for a hoist operated continuously at 63% of rated capacity on the cycle below, assuming continued operation or repeated starting over a long time span.



$$\text{Example (single speed): \%ED} = \frac{\text{Motor ON time (t1 + t3)}}{T (1 \text{ cycle})} \times 100$$

(Where T = 1 cycle (t1 + t2 + t3 + t4) and is not more than 10 minutes.)

Options and Technical Data

COMPLIANCE

Harrington's RY Hoists are produced to comply with the following standards:

- NFPA 70 "National Electric Code"
- ASME B30.16, "Safety Standard – Overhead Hoists (Underhung)"
- ASME HST-4, "Performance Standard for Overhead Electric Wire Rope Hoists"
- RY hoists in standard configurations (including certain options) are certified to UL 1340 "Standard for Hoist", CSA 22.2 No. 33

PRODUCT CODE

RYU 050 B 25 HDD 4

