

# RH-Advantage Wire Rope Trolley Hoists

**HARRINGTON**  
A KITO GROUP COMPANY

## Wire Rope Hoists Have Space Saving Design and Exceptional Quality

Harrington's RH-Advantage electric wire rope trolley hoists are built with an ultra-low headroom configuration which provides the lowest headroom possible by positioning the trolley and hoist parallel with the beam. Product line includes a standardized selection of commonly used trolley hoists designed for heavy-duty applications.



### Selection

- Stocked in 5, 7 1/2 and 10 Ton capacities
- Ultra-low headroom configuration
- Standard 23 foot or 33 foot lift
- Voltage 460V-3-60 or 230V-3-60

### Dependability

- Revolutionary conical rotor brake virtually eliminates brake maintenance issues
- IP55-rated and suitable for harsh environments
- Spring-tensioned, next generation rope guide secures rope to drum
- Hoist and trolley feature heavy-duty fan cooled motors
- Premium hoist rope provides resistance to fatigue and wear

### Ease of use

- Low headroom configuration
- Requires very little maintenance
- Easy access design simplifies inspection of rope, drum and related components
- Installation on beam requires no special tools and does not utilize threaded rods common on other brands

*Ask your local sales representative or call our Customer Service staff for friendly and expert advice on models and options.*

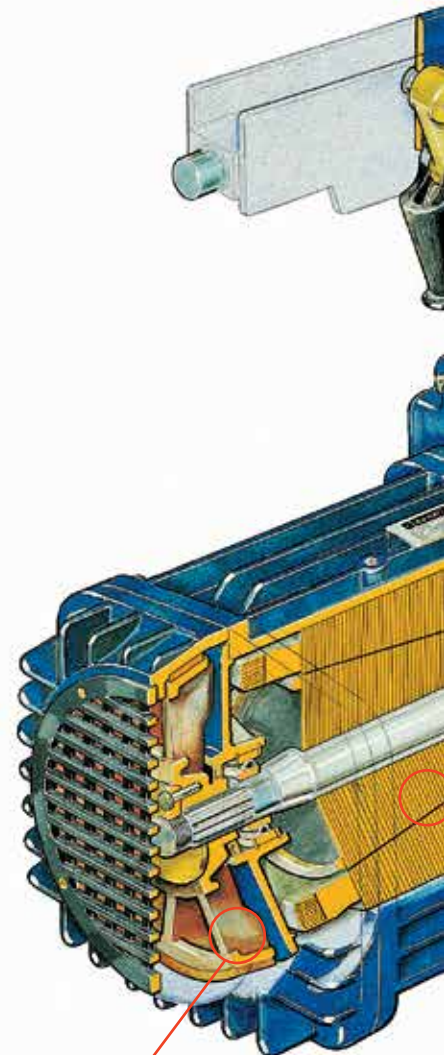
## RH-Advantage Electric Wire Rope Hoists

Harrington RH-Advantage wire rope hoists are designed and built for today's heavy-duty wire rope hoist applications including fabricating, die handling and production line work. State-of-the-art design features and construction make the RH-Advantage extremely durable, highly reliable and very low maintenance for years of trouble free service.

The RH-Advantage includes features that are expensive options on competitive hoists and include a heavy-duty rope guide, fan-cooled motor and rubber trolley bumpers. Maintenance and failures associated with disc type brakes are eliminated with our revolutionary conical rotor brake system. The sealed hoist electrical enclosure means airborne grit and contamination will not penetrate the hoist to cause premature failure of electrical components.

The RH-Advantage's design is maintenance friendly. Examples are a hinged electrical panel and external upper/lower limit switches to minimize hoist downtime and expense.

**High quality paint**  
*is electrostatically applied for corrosion resistance in harsh environments*



**Conical rotor brake**  
*is fan cooled to ensure long life*

**Electro-mechanical load limiter**  
prevents lifting of over capacity loads  
(Standard on 7 1/2 Ton; optional on  
5 and 10 Ton)

**External limit switches** protect  
against hook overtravel

**Sealed (IP55) electrical components** are mounted on  
hinged panels for easy servicing

**Spring-tensioned rope guide** keeps  
the rope securely to its  
groove on the drum

**Low profile**  
minimizes wasted  
space and reduces  
headroom

**Easy access design**  
simplifies inspection of  
drum, rope and related  
components

**Triple reduction helical gearing**  
provides smooth, quiet  
operation with minimum  
vibration

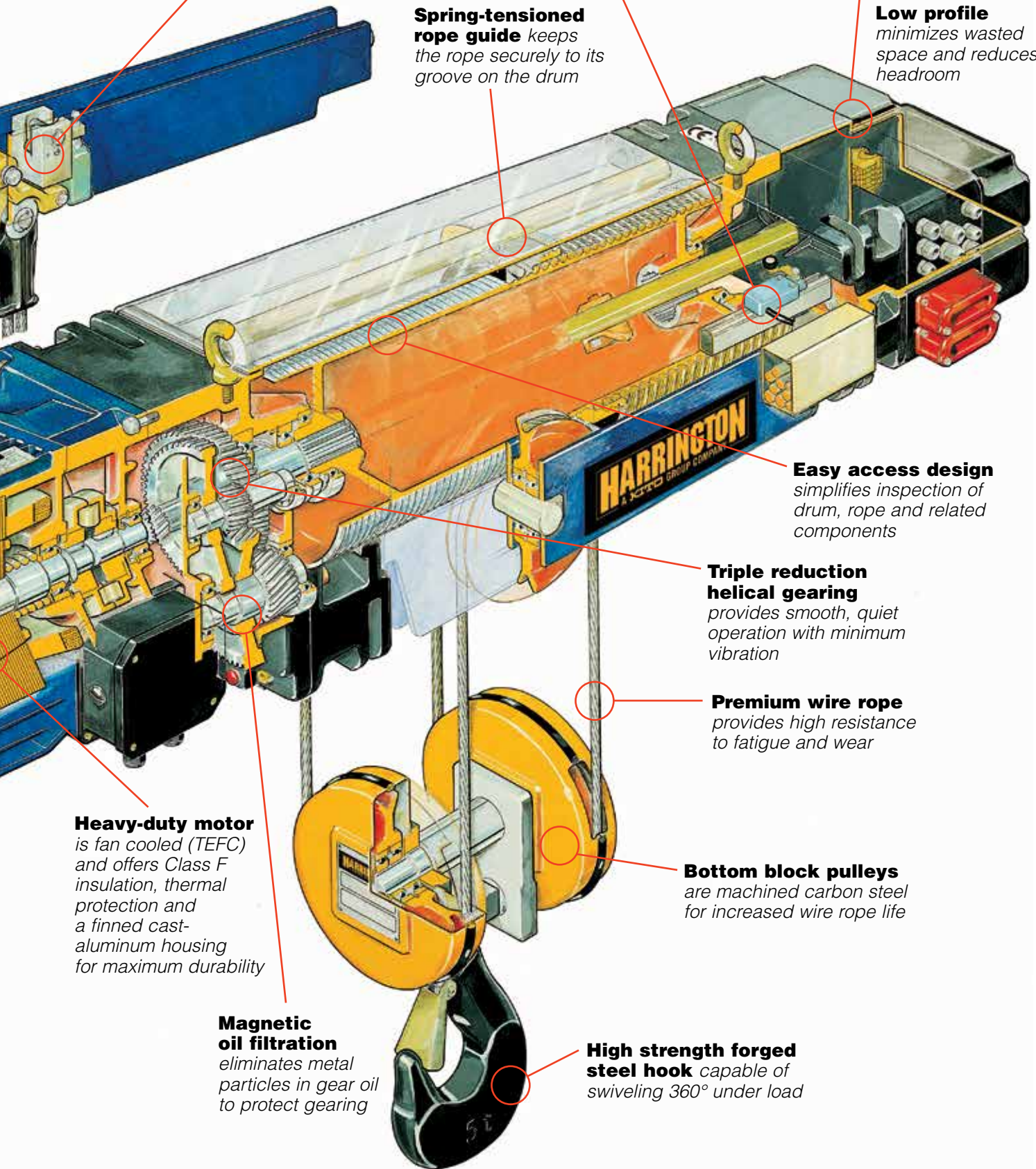
**Premium wire rope**  
provides high resistance  
to fatigue and wear

**Bottom block pulleys**  
are machined carbon steel  
for increased wire rope life

**Heavy-duty motor**  
is fan cooled (TEFC)  
and offers Class F  
insulation, thermal  
protection and  
a finned cast-  
aluminum housing  
for maximum durability

**Magnetic oil filtration**  
eliminates metal  
particles in gear oil  
to protect gearing

**High strength forged  
steel hook** capable of  
swiveling 360° under load



## RH-ADVANTAGE WIRE ROPE TROLLEY HOISTS—HOIST SPECIFICATIONS

Capacity (Tons)	Product Code	Lift (ft)	Lifting Speed (ft/min)	Reeving (parts/ reeving)	Rope (mm-spec.)	Dual Speed Lifting Motor 3 Phase 60Hz		Net Weight (lbs)	
						Output (Hp)	Rated Current (amps)		
							@460V		@230V
5	RH05U23D4G--WA	23	16/5	4/1	9	8.2/2.7	11.5/9.6	23.0/19.2	991
	RH05U33D4G-①-WA	33							1101
7 1/2	RH08U23D3G-①-WA	23							991
	RH08U33D3G-①-WA	33							1101
10	RH10U23D4L-①-WA	23			13	16.3/5.4	23.0/17.3	46.0/34.6	2429
	RH10U33D4L-①-WA	33							2671

① 2 = 230V - 3ph - 60Hz; 4 = 460V - 3ph - 60Hz

## RH-ADVANTAGE WIRE ROPE TROLLEY HOISTS—TROLLEY SPECIFICATIONS

Capacity (Tons)	Product Code	Standard Flange Width B (in)	Traversing Motors		
			Dual Speed 80/20 ft/min		
			Output (Hp)	Rated Current (amps)	
				@460V	@230V
5	RH05U23D4G-①-WA	4.69 to 15.75	0.52/0.11	1.0/0.8	2.0/1.6
	RH05U33D4G-①-WA				
7 1/2	RH08U23D3G-①-WA				
	RH08U33D3G-①-WA				
10	RH10U23D4L-①-WA	5.31 to 15.75	0.82/0.2	1.35/1.2	2.7/2.4
	RH10U33D4L-①-WA				

## RH-ADVANTAGE WIRE ROPE TROLLEY HOISTS—DIMENSIONS

Capacity (Tons)	Product Code	C (in)	C1 (in)	C2 (in)	D (in)	D1 (in)	D2 (in)	E1 (in)	E2 (in)	I1 (in)	ØR (in)	S1 (in)	S2 (in)	S3 (in)	
5	RH05U23D4G-①-WA	6.3	4.3	14.4	19.5	10.4	22.1	7.6	7.6	23.6	4.92	5.3	11.2	7.1	
	RH05U33D4G-①-WA											8.3	23.2	7.9	
7 1/2	RH08U23D3G-①-WA											23.6	5.3	11.2	7.1
	RH08U33D3G-①-WA											39.4	8.3	23.2	7.9
10	RH10U23D4L-①-WA	10.8	-2.8	16.9	24.6	13.2	24.5	11.0	10.2	29.1	7.87	6.3	13.4	9.4	
	RH10U33D4L-①-WA									49.6		9.4	29.5	10.6	

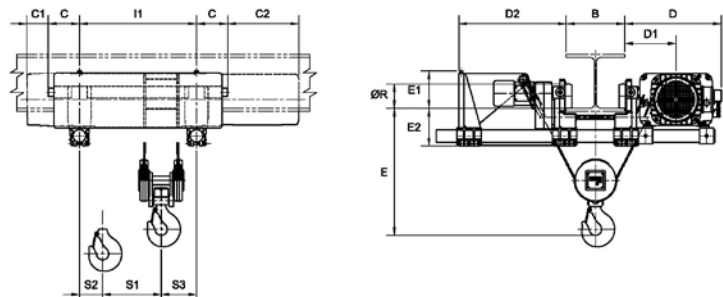
Note: RH-Advantage trolleys are suitable for use on S or W shaped beams.

## RH-ADVANTAGE WIRE ROPE TROLLEY HOISTS—HEADROOM

Hoist Code	Flange Range** (in)	Headroom, E* (in)	Headroom, E for 6 inch Flange (in)
G	4.69 to 6.49	18.9	18.9
	6.50 to 15.75	10.9 + (1.23 x T)	
L	5.31 to 10.51	24.0	24.0
	10.52 to 15.75	11.4 + (1.20 x T)	

\*T in formulas is the exact beam flange width in inches.

\*\*Trolley and trolley drive shafts must be field adjusted to accommodate customer-specific beam size.



**For additional specifications and dimensions, refer to Harrington's separate publication: RH-Advantage Electric Wire Rope Trolley Hoists Technical Manual.**

Harrington Hoists, Inc.  
401 West End Avenue  
Manheim, PA 17545



Toll Free: 800-233-3010  
Phone: 717-665-2000  
Fax: 717-665-2861

[www.harringtonhoists.com](http://www.harringtonhoists.com)