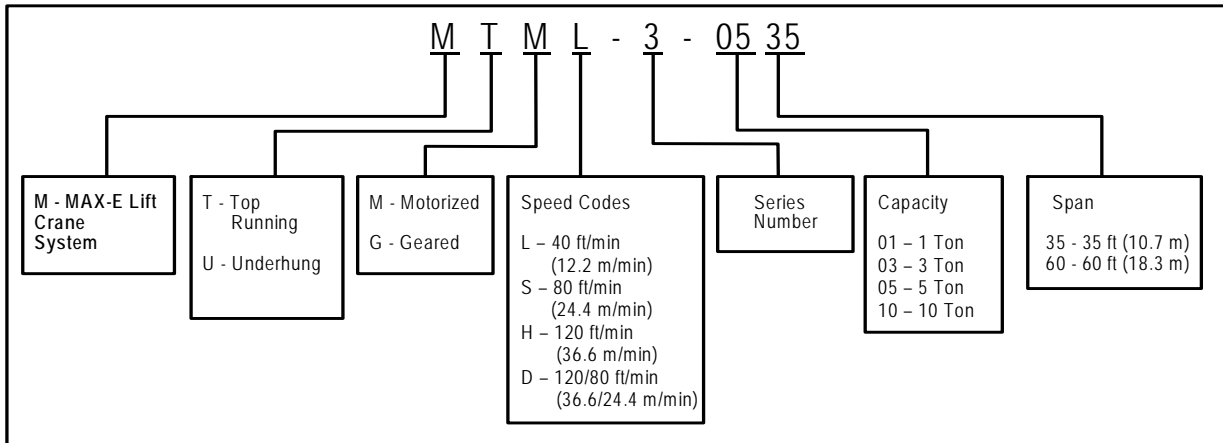
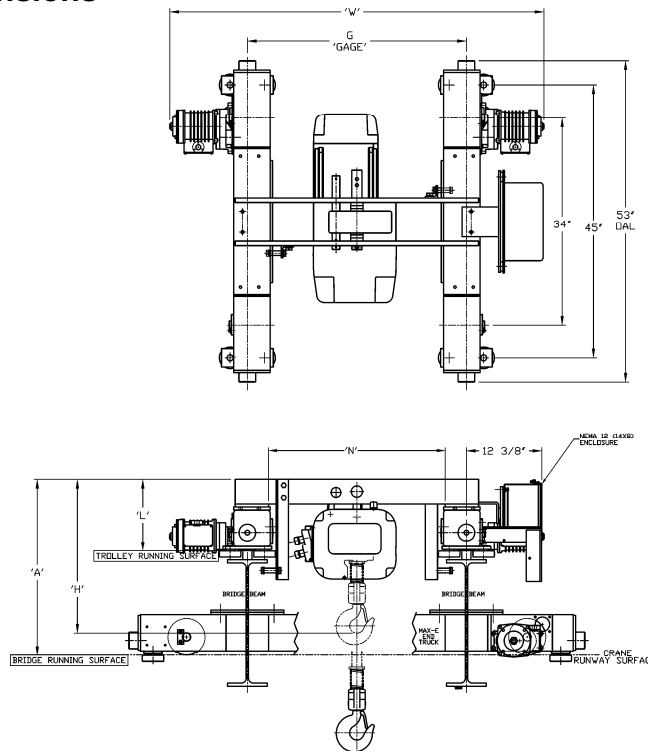


This EDOC pertains to Max-E-Lift Class C Duty Rated Cranes with Top Running End Trucks and components.
Product Code:



Because of the basic concept of the "MAX-E-LIFT" system, the word 'headroom' as usually used in the crane and hoist industry is not meaningful in this system. The important dimension is the system's total height "H" which is the total distance from the top of the trolley to the inside of the load hook in its uppermost position as shown in the above illustration. This important dimension, which is the true meaning of the height to which a load can be lifted, is *one of the lowest in the industry*. The following drawing and chart also shows other dimensions of interest.

MAX-E Trolley Dimensions



MAX-E Trolley Imperial Dimensions

Capacity (Tons)	Model	Lift Speed (fpm)	A (in)	H (in)	L (in)	W (in)		G (in)	N (in)
						Single Speed	Dual Speed		
1	L	16	28 11/16	16 11/16	11 3/4	61 1/2	62 17/32	36	29
	LD	14/5							
	S	29		17 29/32					
	SD	29/10							
	M	24		16 11/16					
2	L	14	28 11/16	21 19/32	11 3/4	61 1/2	62 17/32	36	29
	LD	15/5		22 3/16					
	S	28		23 23/32					
	SD	29/10		26 23/32					
	M	24		21 19/32					
3	L	16	29 11/16	25 15/16	12 3/4	61 1/2	62 17/32	36	29
	LD	17/6		28 7/16					
	S	22		25 15/16					
	SD	23/8		28 7/16					
	C	12		28 7/8					
5	L	12	31 15/16	32 5/16	12 3/4	61 1/2	62 17/32	36	29
	LD	12/4		34 21/32					
8	S	8	41 1/2	45 3/16	16 1/8	77 13/16	78 27/32	52	44 1/2
	SD	8/3							
10	L	6	41 1/2	42 7/8	16 1/8	77 13/16	78 27/32	52	44 1/2
	LD	6/2							
	S	12		43 1/2					
	SD	12/4							

MAX-E Trolley Metric Dimensions

Capacity (Tons)	Model	Lift Speed (mpm)	A (mm)	H (mm)	L (mm)	W (mm)		G (mm)	N (mm)
						Single Speed	Dual Speed		
1	L	4.9	729	424	298	1562	1588	914	737
	LD	4.3/1.5							
	S	8.8		455					
	SD	8.8/3		424					
	M	7.3		424					
2	L	4.3	729	548	298	1562	1588	914	737
	LD	4.6/1.5		564					
	S	8.5		602					
	SD	8.8/3		679					
	M	7.3		548					
3	L	4.9	754	659	324	1562	1588	914	737
	LD	5.2/1.8		722					
	S	6.7		659					
	SD	7/2.4		722					
	C	3.7		733					
5	L	3.7	811	821	324	1562	1588	3914	737
	LD	3.7/1.2		880					
8	S	2.4	1054	1148	410	1976	2003	1321	1130
	SD	2.4/9							
10	L	1.8	1054	1089	410	1976	2003	1321	1130
	LD	1.8/6							
	S	3.7		1105					
	SD	3.7/1.2							

End Truck Gear Motor IMPERIAL Specification Table

End Truck Product Code	Speed Codes L and S			Speed Code H			Speed Code D			End Truck Weight (lbs./pair)	System Max. Wheel Load (lbs./wheel)
	One Motor Per End Truck 3 Phase 60 Hz			One Motor Per End Truck 3 Phase 60 Hz			One Motor Per End Truck 3 Phase 60 Hz				
	Output (Hp)	Rated Current (amps)		Output (Hp)	Rated Current (amps)		Output (Hp)	Rated Current (amps)			
		@230V	@460V		@230V	@460V		@230V	@460V		
MTML/S/H/D-3-0135	0.33	1.6	1.0	0.5	2.1	1.3	0.33/0.10	1.6/1.1	0.9/0.8	340	2119
MTML/S/H/D-3-0160										441	3378
MTML/S/H/D-3-0335										515	4767
MTML/S/H/D-3-0360										632	6453
MTML/S/H/D-3-0535										648	7287
MTML/S/H/D-3-0560	0.50	2.1	1.3	1.0	3.3	2.0	0.50/0.13	2.0/1.5	1.2/0.9	818	8807
MTML/S/H/D-3-1035	1.00	3.3	2.0	2.0	5.8	3.1	1.00/0.25	3.7/2.1	2.3/1.4	1024	13926
MTML/S/H/D-3-1060										1149	16582

End Truck Gear Motor METRIC Specification Table

End Truck Product Code	Speed Codes L and S			Speed Code H			Speed Code D			End Truck Weight (kg/pair)	System Max. Wheel Load (kg/wheel)
	One Motor Per End Truck 3 Phase 60 Hz			One Motor Per End Truck 3 Phase 60 Hz			One Motor Per End Truck 3 Phase 60 Hz				
	Output (kW)	Rated Current (amps)		Output (kW)	Rated Current (amps)		Output (kW)	Rated Current (amps)			
		@230V	@460V		@230V	@460V		@230V	@460V		
MTML/S/H/D-3-0135	0.25	1.6	1.0	0.4	2.1	1.3	0.25/0.063	1.6/1.1	0.9/0.8	154.2	961.2
MTML/S/H/D-3-0160										200.0	1532.2
MTML/S/H/D-3-0335										233.6	2162.3
MTML/S/H/D-3-0360										286.7	2927.0
MTML/S/H/D-3-0535										293.9	3305.3
MTML/S/H/D-3-0560	0.40	2.1	1.3	0.75	3.3	2.0	0.40/0.10	2.0/1.5	1.2/0.9	371.0	3994.8
MTML/S/H/D-3-1035	0.75	3.3	2.0	1.5	5.8	3.1	0.75/0.19	3.7/2.1	2.3/1.4	509.8	6316.7
MTML/S/H/D-3-1060										521.2	7521.5

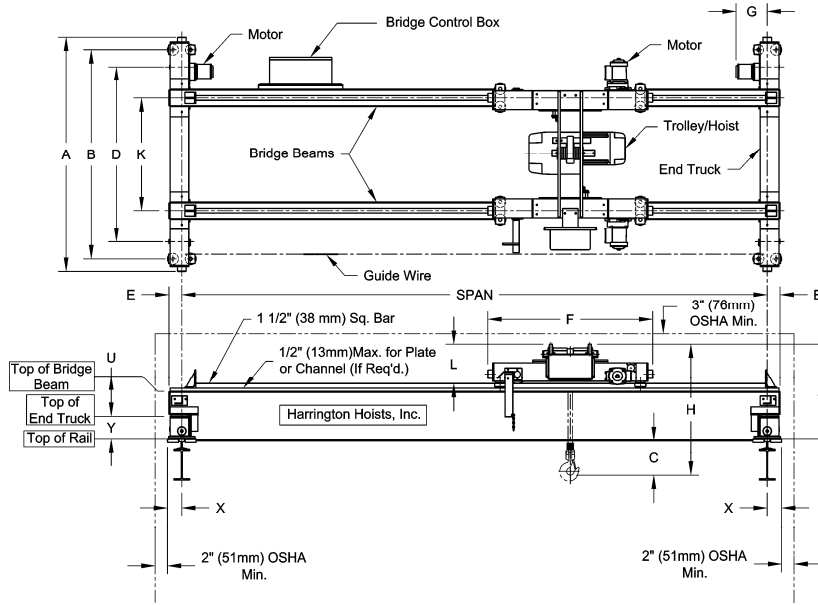
Speed Code

L - Designates 40 ft/min (12.2 m/min)
 S - Designates 80 ft/min (24.4 m/min)
 H - Designates 120 ft/min (36.6 m/min)
 D - Designates dual speed 80/20 ft/min (24.4/6.1 m/min)

Product code derivation - example: TML-3-0135

T - Top Running
 M - Motorized
 L - Speed of 40 ft/min (12.2 m/min)
 3 - Series number
 01 - Max. Capacity - 1 Ton
 35 - Maximum span - 35 feet (10.7 meters)

MOTORIZED TOP RUNNING DUAL DRIVE END TRUCKS



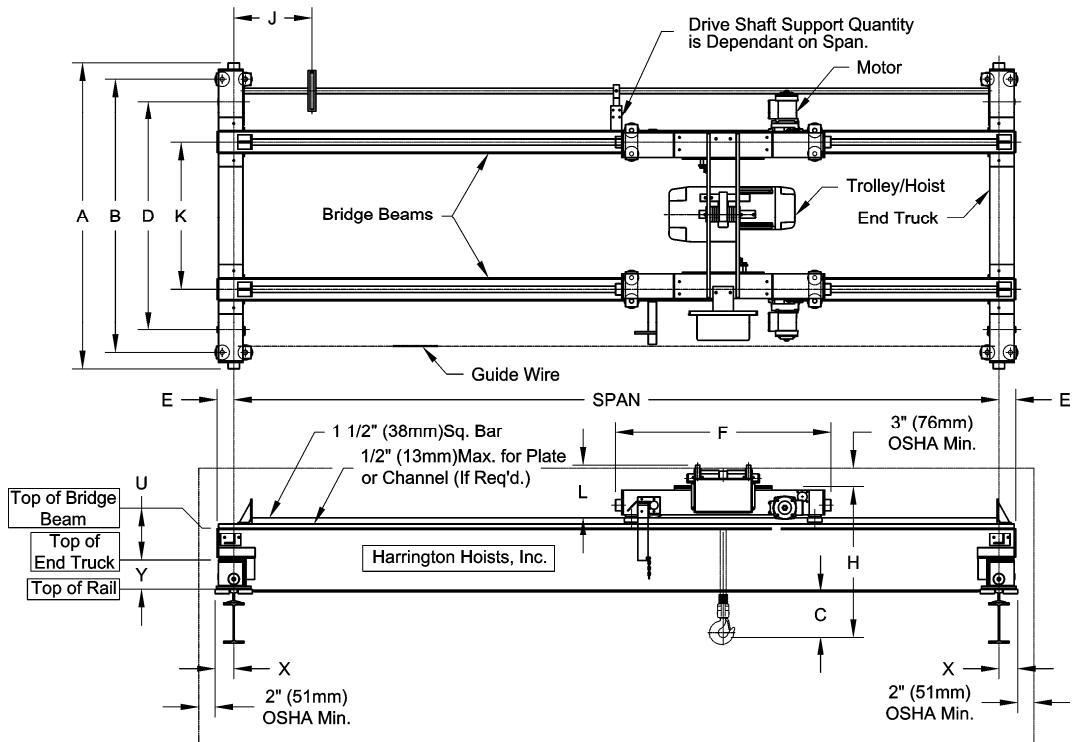
Imperial

MAX-E-LIFT TOP RUNNING MOTORIZED															
Max. Cap. (Tons)	Max. Span (ft)	End Truck Model #	Wheel Diameter (in)	Sug. Min. Runway Rail (ASCE#)	A Overall Length (in)	B Roller Base (in)	D Wheel Base (in)	E Beam Beyond Span (in)	K Beam Gauge (in)	U Beam Height Above End Truck (in)	X Width Beyond Span (in)	Y End Truck Overall Height (in)	AA Span to Motor End (in)	Motor End Truck Weight (lbs./pr)	System Max. Wheel Load (lbs./ wheel)
1	35	MTML/S/H/D-3-0135	3.74	30	72	64	54	2.44	36	8.6	4.6	7.1	13.6	340	2119
	60	MTML/S/H/D-3-0160			111	103	93							441	3378
3	35	MTML/S/H/D-3-0335	6.10		75	67	56	4.13					526	4767	
	60	MTML/S/H/D-3-0360			112	104	93						647	6453	
5	35	MTML/S/H/D-3-0535	8.30	40	75	67	56	3.88	52	12.6	4.7	9.2	13.7	648	7287
	60	MTML/S/H/D-3-0560			112	103	87					9.3	18.0	818	8807
10	35	MTML/S/H/D-3-1035	9.84	60	97	87	71	5.75			11.3	18.2	1124	13926	
	60	MTML/S/H/D-3-1060			113	103	87						1202	16582	

Metric

MAX-E-LIFT TOP RUNNING MOTORIZED															
Max. Cap. (Tons)	Max. Span (m)	End Truck Model #	Wheel Diameter (mm)	Sug. Min. Runway Rail (ASCE#)	A Overall Length (mm)	B Roller Base (mm)	D Wheel Base (mm)	E Beam Beyond Span (mm)	K Beam Gauge (mm)	U Beam Height Above End Truck (mm)	X Width Beyond Span (mm)	Y End Truck Overall Height (mm)	AA Span to Motor End (mm)	Motor End Truck Weight (kg/pr)	System Max. Wheel Load (kg/ wheel)
1	10.7	MTML/S/H/D-3-0135	95	30	1829	1626	1372	62	914	218	117	180	345	154.2	961.2
	18.3	MTML/S/H/D-3-0160			2819	2616	2362							200.0	1532.2
3	10.7	MTML/S/H/D-3-0335	155		1905	1702	1422	105					238.6	2162.3	
	18.3	MTML/S/H/D-3-0360			2845	2642	2362						293.5	2927.0	
5	10.7	MTML/S/H/D-3-0535	211	40	1905	1702	1422	99	160	287	119	234	348	293.9	3305.3
	18.3	MTML/S/H/D-3-0560			2845	2616	2210					236	457	371.0	3994.8
10	10.7	MTML/S/H/D-3-1035	250	60	2464	2210	1803	146			1320	320	462	509.8	6316.7
	18.3	MTML/S/H/D-3-1060			2870	2616	2210							545.2	7521.5

MANUAL GEARED TOP RUNNING DUAL DRIVE END TRUCKS



Imperial

MAX-E-LIFT TOP RUNNING GEARED															
Max. Cap. (Tons)	Max. Span (ft)	End Truck Model #	Wheel Diameter (in)	Sug. Min. Runway Rail (ASCE#)	A Overall Length (in)	B Roller Base (in)	D Wheel Base (in)	E Beam Beyond Span (in)	J Hand Wheel Offset (in)	K Beam Gauge (in)	U Beam Height Above End Truck (in)	X Width Beyond Span (in)	Y Overall Height (in)	End Truck Weight (lbs./pr)	System Max. Wheel Load (lbs./ wheel)
1	35	MTG-3-0135	3.74	30	72	64	54	2.44	9.6	36	8.6	4.6	7.1	310	2086
	50	MTG-3-0150			111	103	93							411	2853
3	35	MTG-3-0335	6.10		75	67	56	4.13	9.9					406	4714
	50	MTG-3-0350			112	104	93							523	6011
5	35	MTG-3-0535	8.30	40	75	67	56	3.88	9.8	4.7	9.2	539	7235		
	50	MTG-3-0550			112	103	87					789	8385		

Metric

MAX-E-LIFT TOP RUNNING GEARED															
Max. Cap. (Tons)	Max. Span (m)	End Truck Model #	Wheel Diameter (mm)	Sug. Min. Runway Rail (ASCE#)	A Overall Length (mm)	B Roller Base (mm)	D Wheel Base (mm)	E Beam Beyond Span (mm)	J Hand Wheel Offset (mm)	K Beam Gauge (mm)	U Beam Height Above End Truck (mm)	X Width Beyond Span (mm)	Y Overall Height (mm)	End Truck Weight (kg/pr)	System Max. Wheel Load (kg/ wheel)
1	10.7	MTG-3-0135	95	30	1829	1626	1372	62	244	914	218	117	180	140.6	946.2
	15.2	MTG-3-0150			2819	2616	2362							186.4	1294.1
3	10.7	MTG-3-0335	155		1905	1702	1422	105	251					184.2	2138.2
	15.2	MTG-3-0350			2845	2642	2362							237.2	2726.5
5	10.7	MTG-3-0535	211	40	1905	1702	1422	99	249	119	234	244.5	3281.7		
	15.2	MTG-3-0550			2845	2616	2210					236	357.9	3803.4	