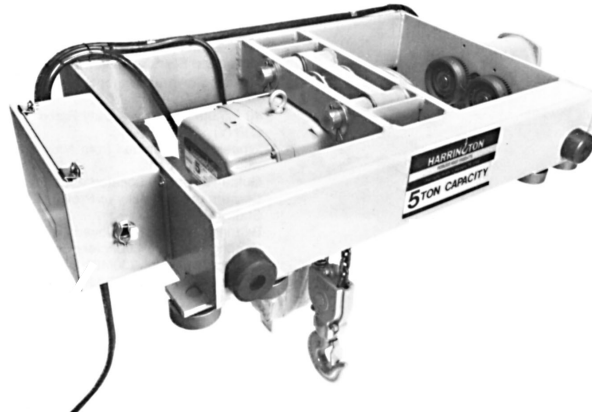


SPECIFICATIONS

MAX-E-LIFT Electric Chain Hoists - Standard features.

Class H3 Duty Rated 40 Minute Motors (TENV)
Class B Insulation
Meets NEMA 3R Specifications
Two Brakes: Motor Brake of Pull Rotor
Type and Weston Mechanical Load Brake
Voltages Available: 230/460-3-60
Upper and Lower Limit Switches
48 Volt Control Circuit
Helical Gears in Oil Bath
Chain Container
High Performance Contactor for Inching are
Mechanically Interlocked



MAX-E-LIFT TROLLEY - Geared or Motorized Standard Features

Tubular Construction for Strength and Rigidity
40 Minute Motors are Duty Rated (TENV)
Wheels are Machined from Alloy Steel with a
Flat Tread
Guide Rollers (8) Located at all Four Corners
of the Trolley to Provide Stability
Bearings are Deep Grooved Ball Bearings and
are Lubricated for Life
Voltages Available: 230/460-3-60
A Geared Hand Wheel Assembly Replaces the
Motor on the Geared Trolley
Trolley Bumpers

Chart IIA Electric Trolley and Electric Hoist

Cap. (Tons)	Trolley Single Speed		Trolley Dual Speed		No. of Falls	Trolley Speed (ft/min)		Lifting Speed (ft/min)		Total HP				Rated Current Total Amp @ 460V				Net Weight (lbs.)		Weight for Additional One Foot of Lift (lbs.)
	Hoist Speed (1) Single (2) Dual		Hoist Speed (3) Single (4) Dual			S	D	S	D	(1)	(2)	(3)	(4)	(1)	(2)	(3)	(4)	1 & 3	2 & 4	
1	MTH-1MS-LHS	MTH-1MS-LHD	MTH-1MD-LHS	MTH-1MD-LHD	2	40	80/20	13	14/5	1.5	1.5/0.9	1.5/1.1	1.5/0.5	3.8	3.9/2.6	3.8/3.5	3.9/2.3	500	525	1.1
	MTH-1MS-SHS	MTH-1MS-SHD	MTH-1MD-SHS	MTH-1MD-SHD	1	40	80/20	26	27/9	2.5	2.5/1.2	2.5/2.1	2.5/0.8	5.3	5.5/3.5	5.3/5.0	5.5/3.2	525	550	.8
2	MTH-2MS-LHS	MTH-2MS-LHD	MTH-2MD-LHS	MTH-2MD-LHD	2	40	80/20	13	13.5/4.5	2.5	2.5/1.2	2.5/2.1	2.5/0.8	5.3	5.3/3.5	5.3/5.0	5.5/3.2	550	570	1.5
	MTH-2MS-SHS	MTH-2MS-SHD	MTH-2MD-SHS	MTH-2MD-SHD	1	40	80/20	26	26/8.5	4.5	4.5/1.8	4.5/4.1	4.5/1.4	9.0	9.4/6.5	9.0/8.7	9.4/6.2	630	685	1.5
3	MTH-3MS-SHS	MTH-3MS-SHD	MTH-3MD-SHS	MTH-3MD-SHD	2	40	80/20	17	17/5.5	5.0	5.0/2.3	5.0/4.3	5.0/1.6	9.7	10.2/7.2	9.7/9.1	10.1/6.6	730	785	3.3
5	MTH-5MS-SHS	MTH-5MS-SHD	MTH-5MD-SHS	MTH-5MD-SHD	2	40	80/20	10.5	10.5/3.5	5.0	5.0/2.3	5.0/4.3	5.0/1.6	9.7	10.1/7.2	9.7/9.1	10.1/6.6	750	800	4.0

Duty Rating (Min.)			
	Capacity	Single Speed	Dual Speed
Hoist	1 Ton L, 1 Ton S and 2 Ton L	50	40/40
	2 Ton S, 3 Ton S and 5 Ton S	40	30/30
Trolley	All	40	40/30

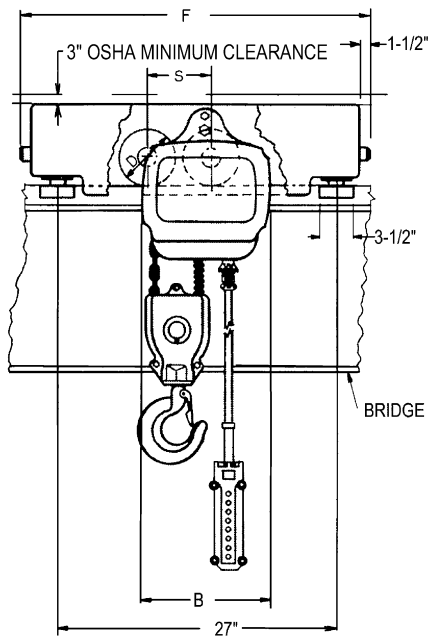
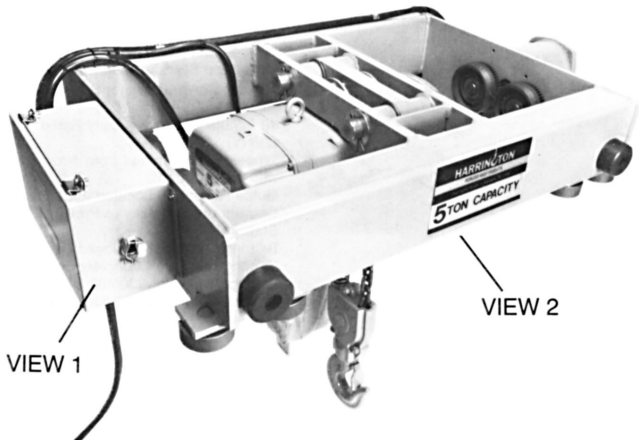
Chart IIB Max-E-Lift Geared Trolley and Electric Hoist

Cap. In (Tons)	Hoist Speed		No. of Falls	Lifting Speed (ft/min)		Total HP		Rated Current Total Amp @ 460V		Weight (lbs.)		Weight for Additional One Foot of Lift (lbs.)
	Single	Dual		S	D	S	D	S	D	S	D	
1	MTH-1G-LHS	MTH-1G-LHD	2	13	14/5	1	1/0.4	2.6	2.7/1.4	420	450	1.7
	MTH-1G-SHS	MTH-1G-SHD	1	26	27/9	2	2/0.7	4.1	4.3/2.3	450	475	1.4
2	MTH-2G-LHS	MTH-2G-LHD	2	13	13.5/4.5	2	2/0.7	4.1	4.3/2.3	470	500	2.1
	MTH-2G-SHS	MTH-2G-SHD	1	26	26/8.5	4	4/1.3	7.8	8.2/5.3	550	610	2.1
3	MTH-3G-SHS	MTH-3G-SHD	2	17	17/5.5	4	4/1.3	7.8	8.2/5.3	640	690	3.9
5	MTH-5G-SHS	MTH-5G-SHD	2	10.5	10.5/3.5	4	4/1.3	7.8	8.2/5.3	660	710	4.6

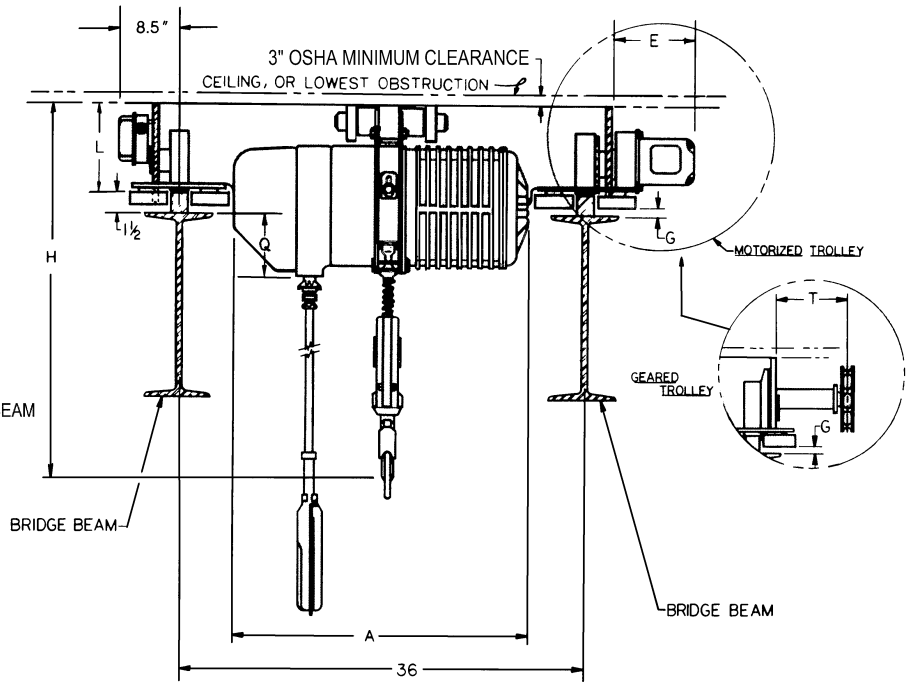
**Rated current @ 230vac is 2 times table value.

Standard Lift is 10 ft.
Standard Push button Station is 4 ft. less than lift
Standard Hand Chain drop for Geared Trolley is 4' less than lift.

DIMENSIONS



VIEW 1



VIEW 2

MAX-E-LIFT TROLLEY PHYSICAL DIMENSIONS (INCHES)																	
Cap (Tons)		A		B		D		E	F	G	H		L	Q	S		T
		Single Speed	Dual Speed	Single Speed	Dual Speed	motorized	geared				Single Speed	Dual Speed			motorized	geared	
1	L	18.0	21.5	8.7	8.7	4.3	3.4	9.2	34.2	0.7	22.1	23.1	6.5	3.7	5.0	5.4	10.8
	S	20.5	23.5	9.7	9.7						20.1	21.1					
2	L	20.5	23.5	9.7	9.7	4.3	3.4	9.2	34.2	0.7	25.8	26.8	6.5	3.7	5.0	5.4	10.8
	S	24.1	26.2	12.6	12.6						24.4	27.7					
3		24.1	26.2	12.6	12.6	5.5	4.6	11.5	34.2	0.6	30.4	32.2	7.6	5.5	6.1	7	10.8
5		24.1	26.2	12.6	12.6	5.5	4.6	11.5	34.2	0.6	32.0	33.4	7.6	5.5	6.1	7	10.8

Standard Lift is 10 ft.
Standard Push Button Station drop is 4 ft. less than lift
Standard Hand Chain drop for Geared Trolley is 4 ft. less than lift.