

---

# OWNER'S MANUAL SUPPLEMENT

---

## **ELECTRIC CHAIN HOIST ED SERIES ED1050**

1050 Lb. Capacity

Code, Lot and Serial Number

### **⚠ WARNING**

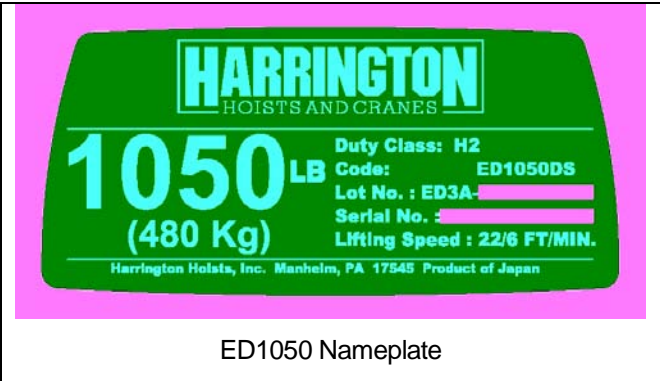
This equipment should not be installed, operated or maintained by any person who has not read and understood all the contents of this manual. Failure to read and comply with the contents of this manual can result in serious bodily injury or death, and/or property damage.

**HARRINGTON**  
HOISTS AND CRANES

## 9.0 Parts List

When ordering Parts, please provide the Hoist code number, lot number and serial number located on the Hoist nameplate (see fig. below).

Reminder: Per sections 1.1 and 3.9.4 to aid in ordering Parts and Product Support, record the Hoist code number, lot number and serial number in the space provided on the cover of this manual.



The parts list is arranged into the following sections:

Section	Page
9.1 ED1050 Additional Parts.....	14

A designator is used to distinguish parts that apply only to a particular model or option. Refer to Section 2 for hoist model numbers and additional descriptions. The designators are:

- S = Single Speed
- DS = Dual Speed

**This Page Intentionally Left Blank**

# 9.1 ED1050 ADDITIONAL PARTS

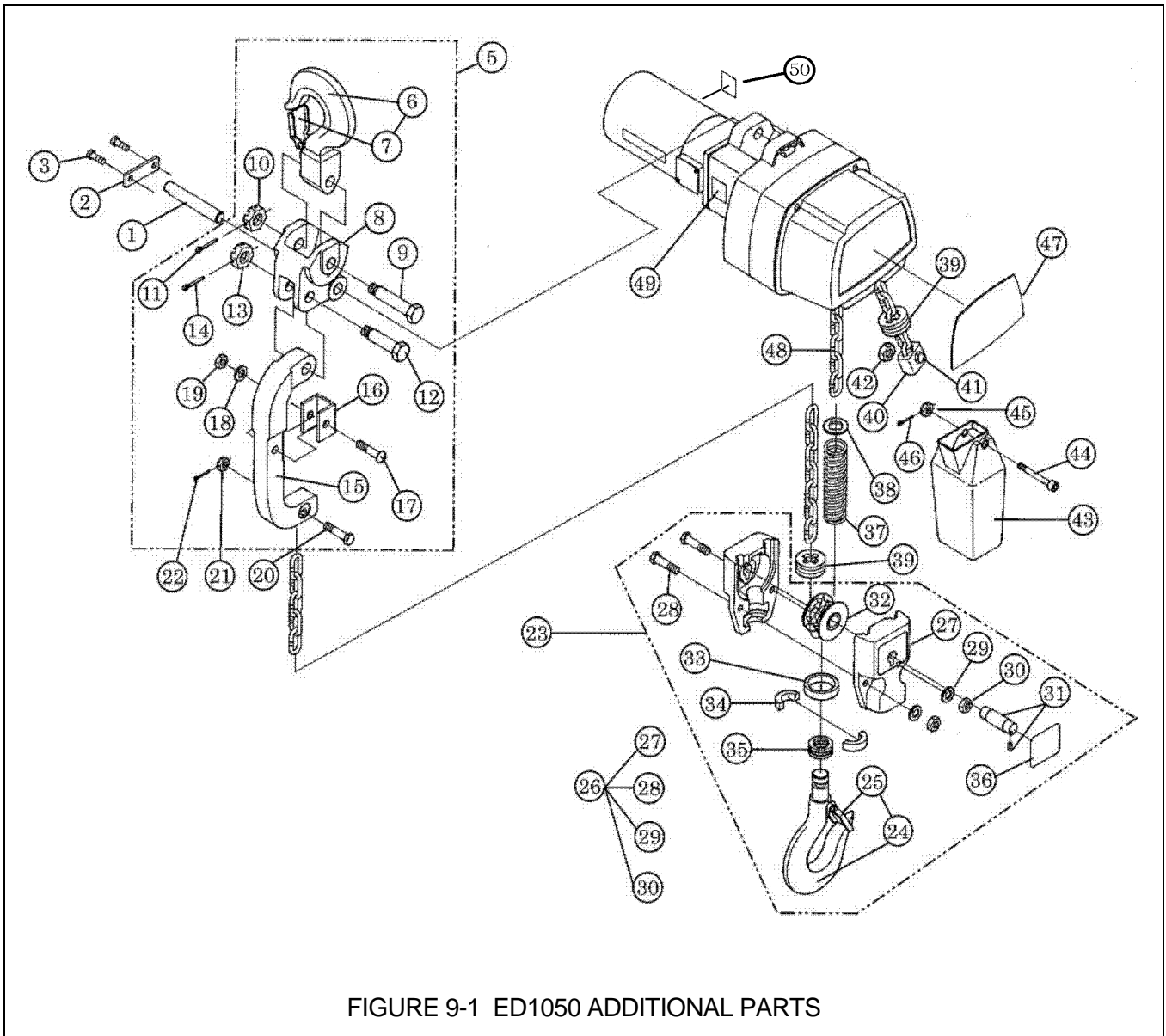


FIGURE 9-1 ED1050 ADDITIONAL PARTS

## 9.1 ED1050 ADDITIONAL PARTS

Fig. No.	Part Number	Part Name	Qty Per Hoist
5	E3DBX48S1470	Connection yoke complete set	1
6	E3DBX48S6460	Top hook assembly	1
7	CF071005	Hook Latch assembly	1
8	E3DBX48S9470	Connection yoke	1
9	ES006005L	Top Pin, L	1
10	L3183008	Slotted nut	1
11	9009403	Split pin	1
15	E3DBX48S9580	Joint yoke	1
16	E3DBX48S9592	Protection pad	1
17	J1AG25003535	Truss head machine screw	1
18	9012510	Washer	1
19	9098503	U nut	1
20	E2D041125	Chain pin	1
21	E2D049125	Slotted nut	1
22	9009402	Split pin	1
23	E3DHX48S1480	Bottom hook complete set	1
24	E3DBX48S2480	Bottom yoke assembly	1
25	ER1BS9002	Hook latch assembly	1
26	E3DBX48S2485	Bottom yoke assembly	1
27	E3DBX48S9485	Bottom yoke	2
28	9093307	Bolt	2
29	9012709	Spring lock washer	2
30	9093420	Nut	2
31	E3DBX48S6489	Bottom shaft assembly	1
32	E3DBX48S6487	Idle sheave assembly	1
33	ES026003	Thrust collar A	1
34	ES027003	Hook stopper	2
35	ES022003	Thrust bearing	1
36	E3DBX48S9597	Name plate C	1
37	E3DBX48S9590	Chain spring	1
38	E3DBX48S9591	Washer	1

## 9.1 ED1050 ADDITIONAL PARTS

<b>Fig. No.</b>	<b>Part Number</b>	<b>Part Name</b>	<b>Qty Per Hoist</b>	
43	E2D1835125	Chain container	1	
	44	E2D854125	Socket bolt BP	1
	45	E2D853125	U nut	1
	46	9009402	Split pin	1
47	E3DHX48S9801	Name plate B, Single Speed	1	
	E3DHX48R9801	Name plate B, Dual Speed	1	
49	E3DBX48S9599	Warning Seal E (Finger protection)	1	
50	E3DHX48S9802	Nameplate M (Motor Nameplate)	1	

**This Page Intentionally Left Blank**

**This Page Intentionally Left Blank**

**This Page Intentionally Left Blank**